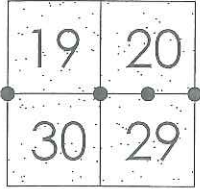


CORNER RECORD

Document Number CR-15-47
County of San Joaquin, California

City of _____

Brief Legal Description LONE TREE ROAD (JACK TONE ROAD TO MURPHY ROAD)



T1S R8E

CORNER TYPE

Government Corner Control
Meander Property
Rancho Other
Date of Survey APRIL 10-13, 2015

COORDINATES (Optional)

N. SEE CHART ON BACKSIDE
E. _____
Zone 3 NAD27 NAD83
NAD83 Epoch 1991.35
Elev. _____
Vert. Datum: NGVD29 NAVD88
Meas. Units: Metric Imperial

Corner - Left as found Found and tagged Established Reestablished Rebuilt

Identification and type of corner found: Evidence used to identify or procedure used to establish or reestablish the corner:
Multiple monuments on the centerline of Lone Tree Road were found and surveyed. The coordinates provided on this corner record are based on San Joaquin County Record of Survey 36-23, performed in November 2005 by Nolte Engineering, adjusted to Epoch 1991.35.

A description of the physical condition of the monument as found and as set or reset:
SEE SKETCH ON BACKSIDE.

SURVEYOR'S STATEMENT

This Corner Record was prepared by me or under my direction in conformance with the Land Surveyors' Act on April 23, 2015.

Signed James E. Hart P.L.S. Number 8657

COUNTY SURVEYOR'S STATEMENT

This Corner Record was received May 7, 2015 and examined and filed May 14, 2015.

Signed Warren D. Smith P.L.S. No. 4842
Title Acting County Surveyor

County Surveyor's Comment _____





N.T.S.

Notes:

No Attempt Was Made to Verify the Monument(s)

● = Found monument as noted.

SFN = Searched Found Nothing

N.T.S. = Not To Scale

BC = Begin Curve

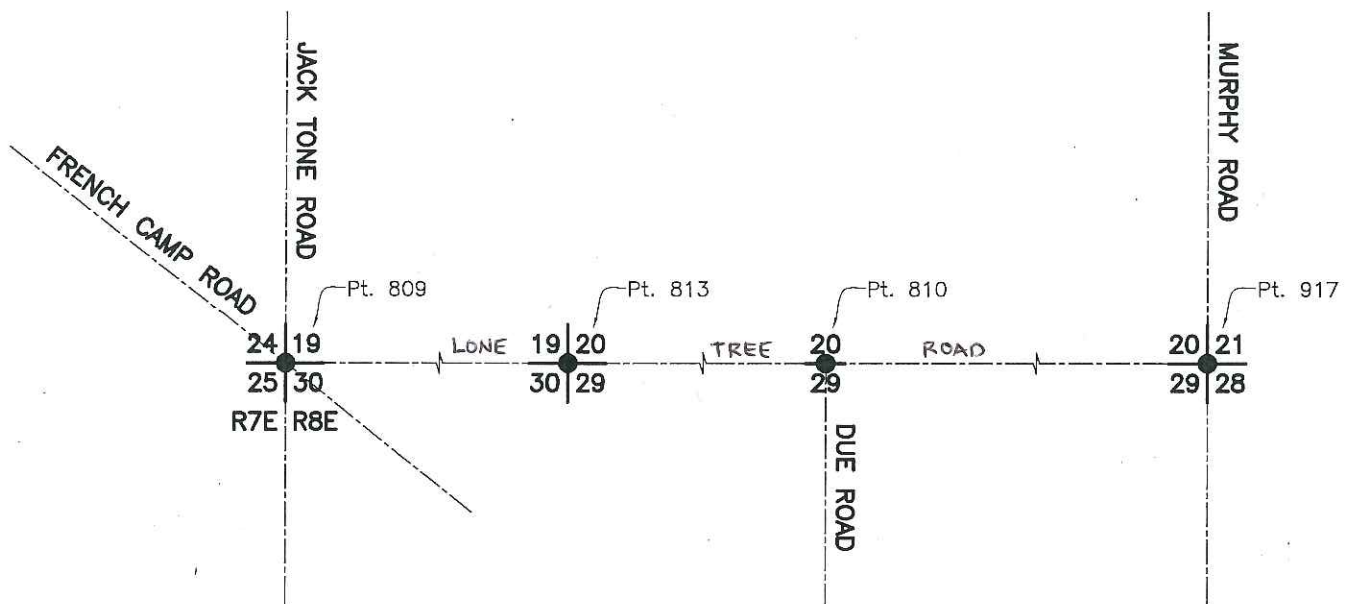
EC = End Curve

PRC = Point of Reverse Curvature

PCC = Point of Compound Curvature

All monuments found per RS 36-23.

To obtain ground distances, multiply grid inverses by a factor of 1.00006917.



Point Name	Northing (Grid)	Easting (Grid)	Alignment	Reference
917	2124190.97	6386079.50	Control	RS 36-23, CR 00-10
810	2124179.18	6383436.63	Control	RS 36-23, CR 00-08
813	2124167.14	6380793.79	Control	RS 36-23, PM 16-74
809	2124135.07	6375587.01	Control	RS 36-23, RS 35-79