

# CORNER RECORD

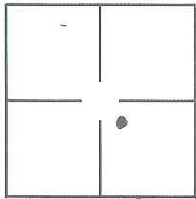
Document Number CR-15-45

City of RIPON

County of SAN JOAQUIN, California

Brief Legal Description LOT 34, PALM GROVE, 40-MAPS & PLATS-87, SAN JOAQUIN COUNTY RECORDS.

### CORNER TYPE



S30, T25, R8E, MDM

Government Corner  Control   
 Meander  Property   
 Rancho  Other   
 Date of Survey 03-25-15

### COORDINATES (Optional)

N \_\_\_\_\_  
 E \_\_\_\_\_  
 Zone \_\_\_\_\_ NAD27  NAD83   
 NAD83 Epoch \_\_\_\_\_  
 Elevation \_\_\_\_\_  
 Vert. Datum: NGVD29  NADV88   
 Meas Units: Metric  Imperial

Corner - Left as found  Found and tagged  Established  Reestablished  Rebuilt

Identification and type of corner found: Evidence used to identify or procedure used to establish or reestablish the corner:

\*SEE EXHIBIT\*

A description of the physical condition of the monument as found and as set or reset: \_\_\_\_\_

\*SEE EXHIBIT\*

### SURVEYOR'S STATEMENT

This Corner Record was prepared by me or under my direction in conformance with  
 the Land Surveyors' Act on April 14<sup>th</sup>, 2015.

Signed Henry Wong P.L.S. or R.C.E. Number 31008



### COUNTY SURVEYOR'S STATEMENT

This Corner Record was received April 15, 2015 and examined  
 and filed April 28, 2015.

Signed Warren D. Smith P.L.S. or R.C.E. Number 4842

Title Acting County Surveyor

County Surveyor's Comment \_\_\_\_\_



**LEGEND:**

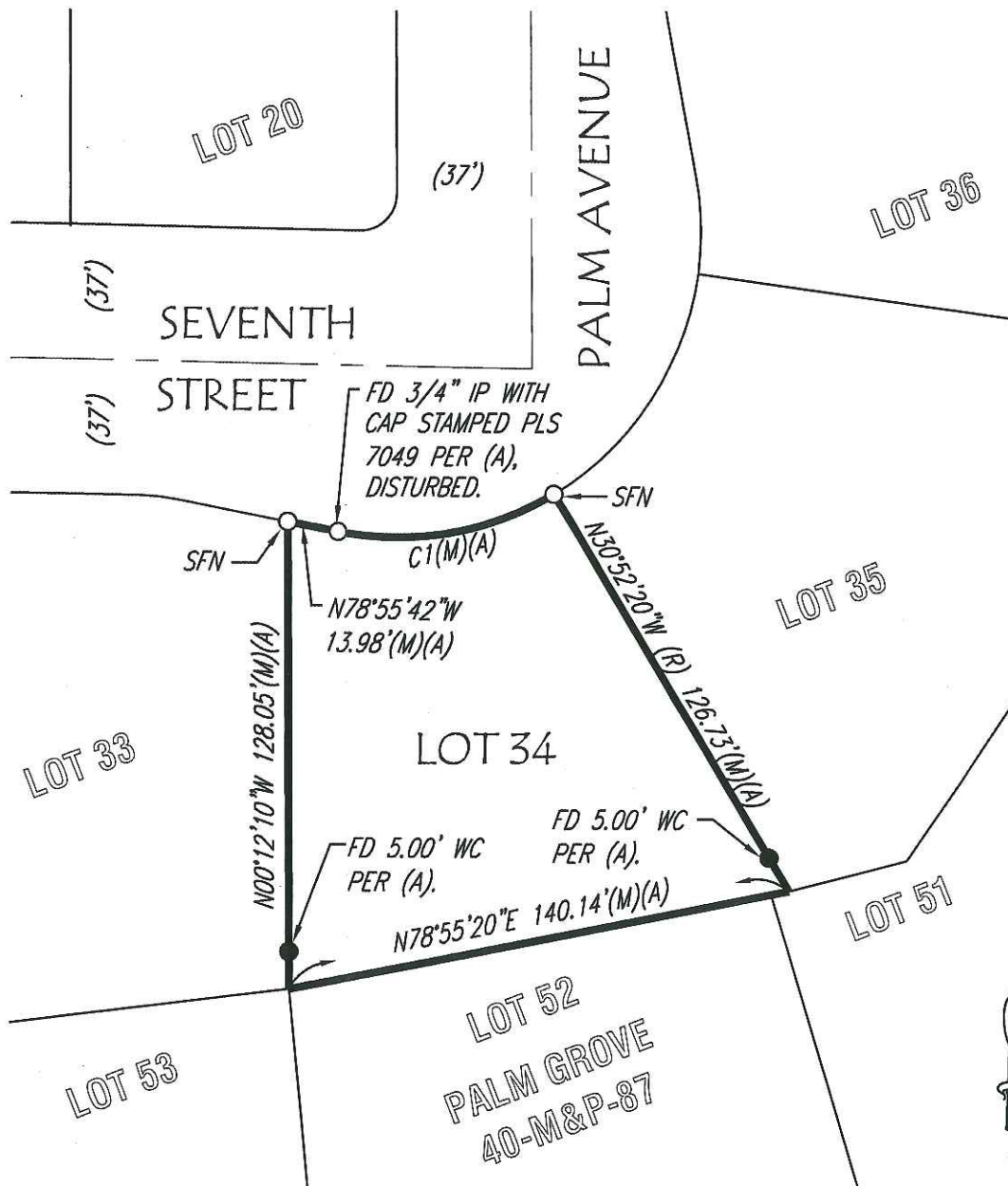
- SJCR SAN JOAQUIN COUNTY RECORDS
- FD FOUND
- IP IRON PIPE
- WC WITNESS CORNER
- (R) RADIAL BEARING
- SET 3/4" x 30" IP WITH PLASTIC CAP STAMPED RCE 31008
- FD 3/4" IP WITH PLASTIC CAP STAMPED PLS 7049, PER (A).

**REFERENCES:**

- (A) BOOK 40 M&P 87, SJCR.
- (M) MEASURED ON THIS SURVEY

**NOTES:**

1. ALL REFERENCES ARE MADE TO SAN JOAQUIN COUNTY RECORDS



CURVE TABLE

CURVE	DELTA	RADIUS	LENGTH
C1	41°56'38"	84.00'	61.49'



SCALE: 1" = 50'