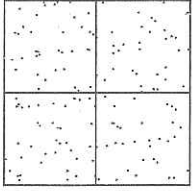


CORNER RECORD

Document Number CR 15-33  
County of San Joaquin, California

City of \_\_\_\_\_

Brief Legal Description HARROLD AVENUE @ JONES ROAD  
( WITHIN SECTION 10, TOWNSHIP 2 SOUTH, RANGE 9 EAST, MOUNT DIABLO BASE & MERIDIAN)



CORNER TYPE  
Government Corner  Control   
Meander  Property   
Rancho  Other   
Date of Survey February 3, 2015

COORDINATES (Optional)  
N. \_\_\_\_\_  
E. \_\_\_\_\_  
Zone \_\_\_\_\_ NAD27  NAD83   
NAD83 Epoch \_\_\_\_\_  
Elev. \_\_\_\_\_  
Vert. Datum: NGVD29  NAVD88   
Meas. Units: Metric  Imperial

Corner - Left as found  Found and tagged  Established  Reestablished  Rebuilt

Identification and type of corner found: Evidence used to identify or procedure used to establish or reestablish the corner:  
SEE SKETCH ON BACKSIDE.

A description of the physical condition of the monument as found and as set or reset:  
SEE SKETCH ON BACKSIDE.

SURVEYOR'S STATEMENT

This Corner Record was prepared by me or under my direction in conformance with the Land Surveyors' Act on March 11, 2015.

Signed James E. Hart P.L.S. Number 8657

COUNTY SURVEYOR'S STATEMENT

This Corner Record was received March 11, 2015 and examined and filed March 19 2015.

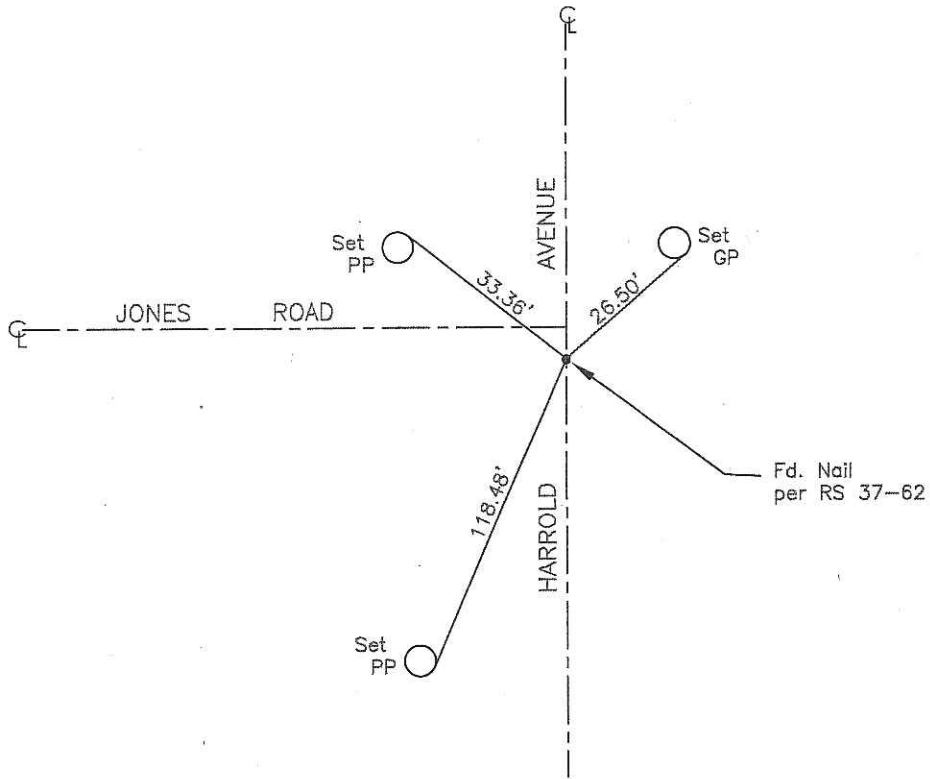
Signed Warren D. Smith P.L.S. No. 4842  
Title Acting County Surveyor

County Surveyor's Comment \_\_\_\_\_  
\_\_\_\_\_  
\_\_\_\_\_





N.T.S.



Note: Found Monuments are not tagged unless otherwise noted.

"No Attempt Was Made to Verify the Monument(s)"

Set=Conc. Nail with Brass Washer Stamped "S.J. Co.", unless otherwise noted

Fd.=Found Conc. Nail with Brass Washer Stamped "S.J. Co.", unless otherwise noted

CR=Corner Record

FP=Fence Post

JP=Joint Pole

LP=Light Pole

PP=Power Pole

GP=Guy Pole

SP=Service Pole

TP=Telephone Pole

S.F.N.=Searched Found Nothing

N.T.S.=Not To Scale

M&P=Maps & Plats

PM=Parcel Map

RS=Record of Survey

FB=Field Book