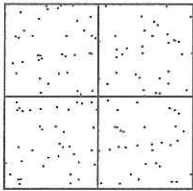


CORNER RECORD

Document Number CR 15-31
 City of _____ County of San Joaquin, California

Brief Legal Description HARROLD AVENUE 1299' ± NORTH OF RIVER ROAD
 (WITHIN SECTION 15, TOWNSHIP 2 SOUTH, RANGE 9 EAST, MOUNT DIABLO BASE & MERIDIAN)



CORNER TYPE
 Government Corner Control
 Meander Property
 Rancho Other
 Date of Survey February 3, 2015

COORDINATES (Optional)
 N. _____
 E. _____
 Zone _____ NAD27 NAD83
 NAD83 Epoch _____
 Elev. _____
 Vert. Datum: NGVD29 NAVD88
 Meas. Units: Metric Imperial

Corner - Left as found Found and tagged Established Reestablished Rebuilt

Identification and type of corner found: Evidence used to identify or procedure used to establish or reestablish the corner:
SEE SKETCH ON BACKSIDE.

A description of the physical condition of the monument as found and as set or reset:
SEE SKETCH ON BACKSIDE.

SURVEYOR'S STATEMENT

This Corner Record was prepared by me or under my direction in conformance with the Land Surveyors' Act on March 11, 2015.

Signed James E Hart P.L.S. Number 8657

COUNTY SURVEYOR'S STATEMENT

This Corner Record was received March 11, 2015 and examined and filed March 19, 2015.

Signed Warren D. Smith P.L.S. No. 4842

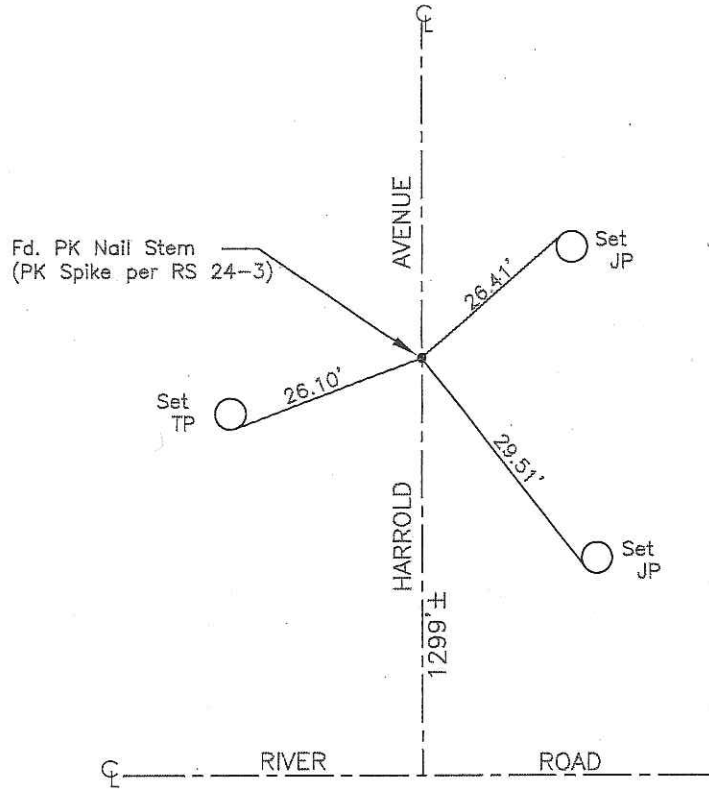
Title Acting County Surveyor

County Surveyor's Comment _____





N.T.S.



Note: Found Monuments are not tagged unless otherwise noted.

"No Attempt Was Made to Verify the Monument(s)"

Set=Conc. Nail with Brass Washer Stamped

"S.J. Co.", unless otherwise noted

Fd.=Found Conc. Nail with Brass Washer Stamped

"S.J. Co.", unless otherwise noted

CR=Corner Record

FP=Fence Post

JP=Joint Pole

LP=Light Pole

PP=Power Pole

GP=Guy Pole

SP=Service Pole

TP=Telephone Pole

S.F.N.=Searched Found Nothing

N.T.S.=Not To Scale

M&P=Maps & Plats

PM=Parcel Map

RS=Record of Survey

FB=Field Book