

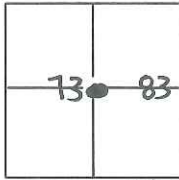
# CORNER RECORD

Document Number CR 15-04

City of \_\_\_\_\_

County of San Joaquin, California

Brief Legal Description Parcels A and B of P.M. 5-62, San Joaquin County Records.



Sections 73 & 83  
Weber Grant

### CORNER TYPE

Government Corner  Control   
 Meander  Property   
 Rancho  Other

Date of Survey January 9, 2015

### COORDINATES(Optional)

N. \_\_\_\_\_  
 E. \_\_\_\_\_  
 Zone \_\_\_\_\_ NAD27  NAD83   
 NAD83 Epoch \_\_\_\_\_  
 Elev. \_\_\_\_\_  
 Vert. Datum: NGVD29  NADV88   
 Meas. Units: Metric  Imperial

Corner - Left as found  Found and tagged  Established  Reestablished  Rebuilt

Identification and type of corner found: Evidence used to identify or procedure used to establish or reestablish the corner:

See sketch of backside

A description of the physical condition of the monument as found and as set or reset: See page 2 of 2

See sketch on backside

### SURVEYOR'S STATEMENT

This Corner Record was prepared by me or under my direction in conformance with the Land Surveyor's Act on January 13, 2015.

Signed Joe Murphy P.L.S. or R.C.E. No.: 7269



### COUNTY SURVEYOR'S STATEMENT

This Corner Record was received January 20, 2015 and examined

and filed January 30, 2015.

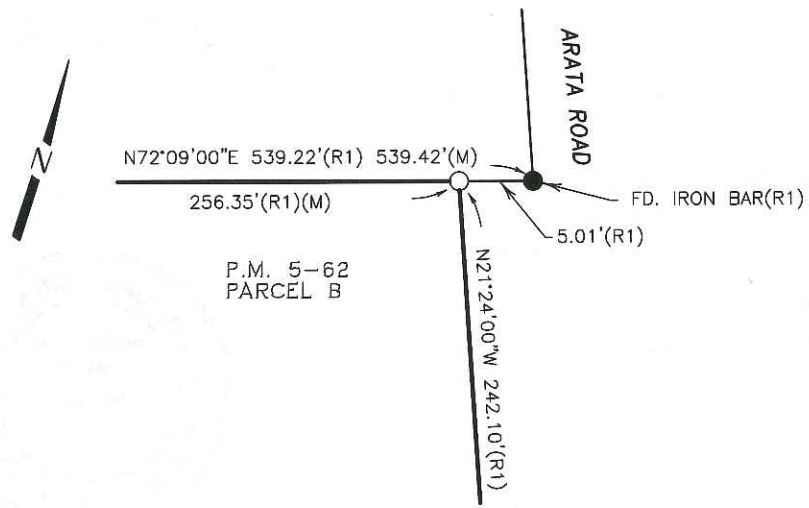
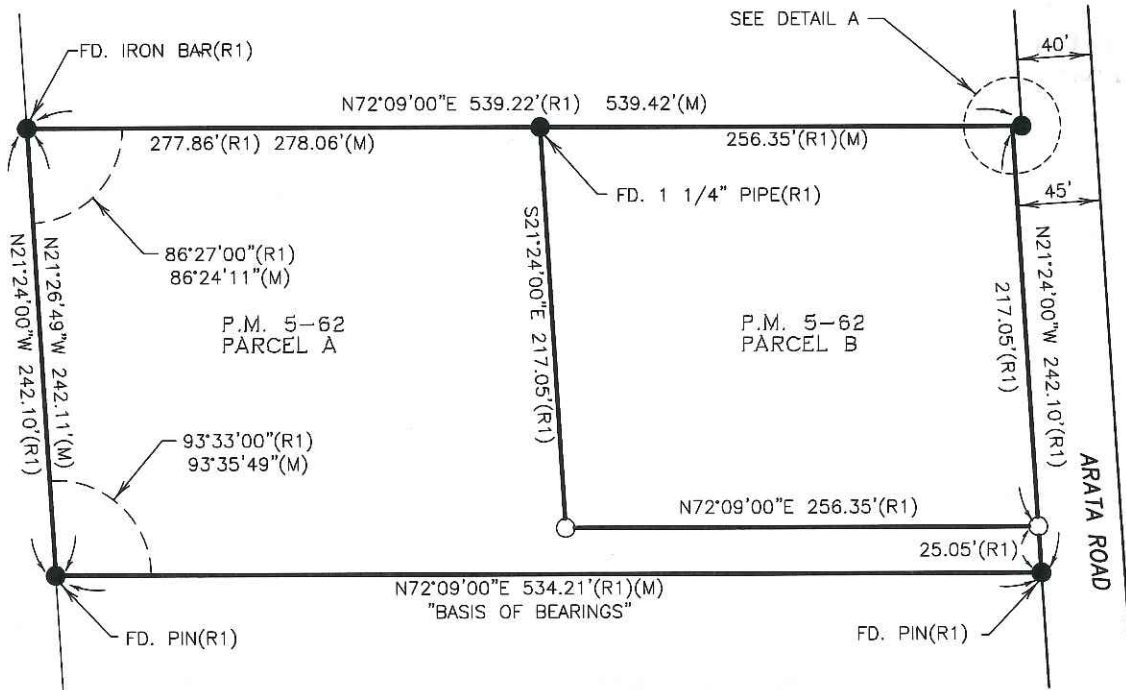
Signed Warren D. Smith P.L.S. or R.C.E. No.: 4842

Title Acting County Surveyor

County Surveyor's Comment \_\_\_\_\_



SCALE:  $1" = 100'$



**DETAIL A**  
NOT TO SCALE

**LEGEND**

FD.	FOUND
(M)	MEASURED
●	FOUND MONUMENT AS NOTED
○	SET 3/4" X 30" IRON ROD, TAGGED "L.S. 7269"
R.S.	RECORD OF SURVEY
P.M.	PARCEL MAP
DOC.	DOCUMENT

**REFERENCES**

(R1)	P.M. 5-62
------	-----------