

CORNER RECORD

Document Number CR-14-311
County of SAN JOAQUIN, California

City of MANTECA

Brief Legal Description MONUMENT ON THE SOUTH SIDE OF LOUISE AVENUE APPROXIMATELY 258'± WEST OF PHILLIPS DRIVE. LOCATED IN THE NORTHWEST QUARTER OF SECTION 32, T.1S, R.7E, M.D.B.&M.

CORNER TYPE

COORDINATES (Optional)

NW 1/4	NE 1/4
SW 1/4	SE 1/4

Government Corner Control
 Meander Property
 Rancho Other

N _____
 E _____
 Zone _____ NAD27 NAD83
 NAD83 Epoch _____
 Elev. 27.40
 Vert. Datum: NVGD29 NVGD88
 Meas. Units: Metric Imperial

SEC. 32 T.1S, R.7E Date of Survey 9-1-2014

Corner— Left as found Found and tagged Established Reestablished Rebuilt

Identification and type of corner found: Evidence used to identify or procedure used to establish or reestablish the corner:
FOUND 3-1/2" BRASS DISK IN CONCRETE STAMPED U.S.G.S. F-799 (1946) ON THE SOUTH SIDE OF LOUISE AVENUE APPROXIMATELY 258'± WEST OF PHILLIPS DRIVE. LOCATED IN THE NORTHWEST QUARTER OF SECTION 32, T.1S, R.7E, M.D.B.&M.

A description of the physical condition of the monument as found and as set or reset:
MONUMENT IS IN AREA OF RECONSTRUCTION, SET TIES AS SHOWN ON PAGE 2.

SURVEYOR'S STATEMENT

This Corner Record was prepared by me or under my direction in conformance with the Land Surveyors' Act on OCTOBER 29, 2014,



Signed [Signature] P.L.S. or R.C.E. Number 6953

COUNTY SURVEYOR'S STATEMENT

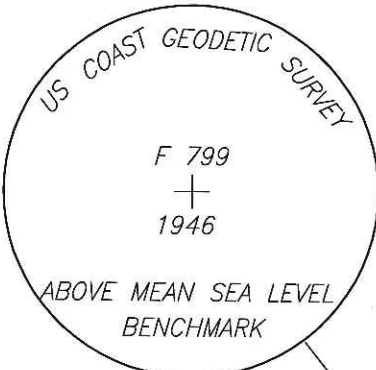
This Corner Record was received December 8, 2014 and examined and filed December 24, 2014



Signed [Signature] P.L.S. or R.C.E. No: 4842

Title Acting County Surveyor

County Surveyor's Comment _____



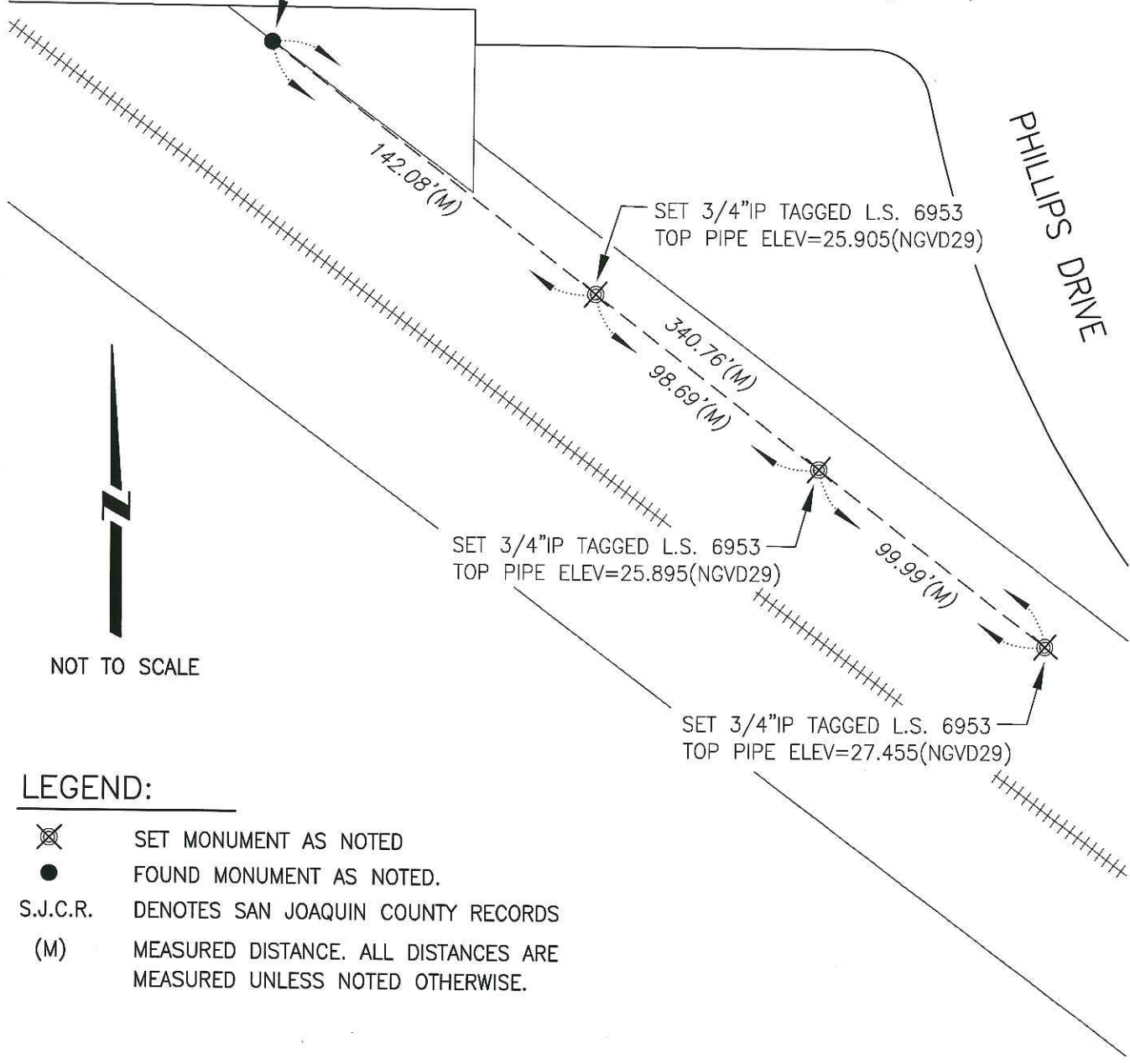
NOTE:

NGS DATA SHEET WAS RETRIEVED ON NOVEMBER 4, 2014

LOUISE AVENUE

FOUND 3-1/2" BRASS DISK IN CONCRETE STAMPED U.S.G.S F-799 (1946).
 CITY OF MANTECA BENCHMARK #24 ELEV=27.40(NGVD29)
 NGS DATA SHEET DESIGNATION - F 799 ELEV=29.64(NAVD88)

PHILLIPS DRIVE



NOT TO SCALE

LEGEND:

- ⊗ SET MONUMENT AS NOTED
- FOUND MONUMENT AS NOTED.
- S.J.C.R. DENOTES SAN JOAQUIN COUNTY RECORDS
- (M) MEASURED DISTANCE. ALL DISTANCES ARE MEASURED UNLESS NOTED OTHERWISE.