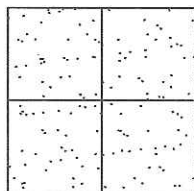


CORNER RECORD

Document Number CR-14-296
County of San Joaquin, California

City of _____

Brief Legal Description OLIVE AVENUE 1386' +/- NORTH OF WEST RIPON ROAD
(WITHIN SECTION 24, TOWNSHIP 2 SOUTH, RANGE 7 EAST, MOUNT DIABLO BASE & MERIDIAN)



CORNER TYPE

Government Corner Control
Meander Property
Rancho Other

Date of Survey November 4, 2014

COORDINATES (Optional)

N. _____
E. _____
Zone _____ NAD27 NAD83
NAD83 Epoch _____
Elev. _____
Vert. Datum: NGVD29 NAVD88
Meas. Units: Metric Imperial

Corner - Left as found Found and tagged Established Reestablished Rebuilt

Identification and type of corner found: Evidence used to identify or procedure used to establish or reestablish the corner:
SEE SKETCH ON BACKSIDE.

A description of the physical condition of the monument as found and as set or reset:
SEE SKETCH ON BACKSIDE.

SURVEYOR'S STATEMENT

This Corner Record was prepared by me or under my direction in conformance with the Land Surveyors' Act on December 2, 2014.

Signed James E Hart P.L.S. Number 8657

COUNTY SURVEYOR'S STATEMENT

This Corner Record was received December 3, 2014 and examined and filed December 15, 2014.

Signed Warren D. Smith P.L.S. No. 4842

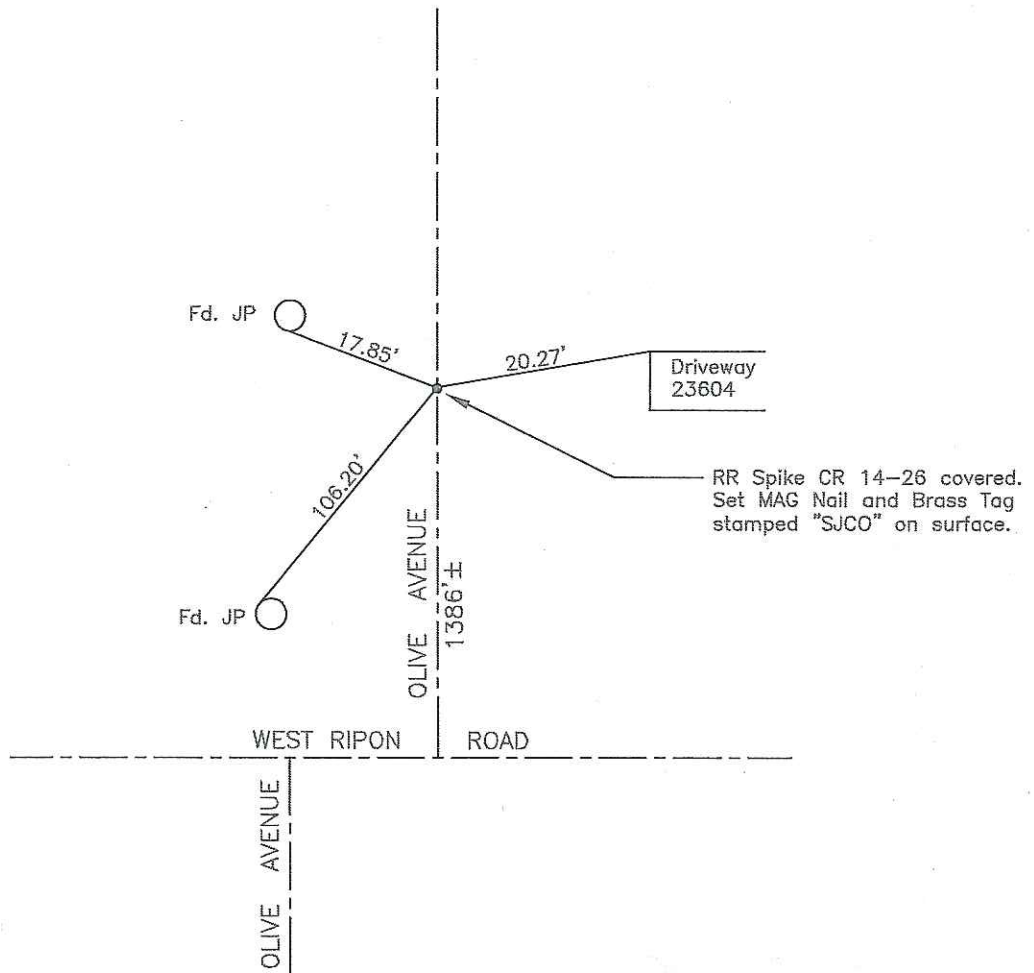
Title Acting County Surveyor

County Surveyor's Comment _____





N.T.S.



Note: Found Monuments are not tagged unless otherwise noted.

"No Attempt Was Made to Verify the Monument(s)"

- Set=Conc. Nail with Brass Washer Stamped "S.J. Co.", unless otherwise noted
- Fd.=Found Conc. Nail with Brass Washer Stamped "S.J. Co.", unless otherwise noted
- CR=Corner Record
- FP=Fence Post
- JP=Joint Pole
- LP=Light Pole
- PP=Power Pole
- GP=Guy Pole
- SP=Service Pole
- TP=Telephone Pole
- S.F.N.=Searched Found Nothing
- N.T.S.=Not To Scale
- M&P=Maps & Plats
- PM=Parcel Map
- RE=Records of Survey
- FB=Field Book

Handwritten signature or initials