

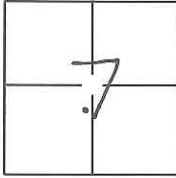
# CORNER RECORD

Document Number CR-14-279

City of Manteca

County of San Joaquin, California

Brief Legal Description Southwest quarter of Section 7, Township 2 South, Range 7 East, M.D.B.M.



### CORNER TYPE

Government Corner  Control   
 Meander  Property   
 Rancho  Other

Date of Survey September 22, 2014

### COORDINATES(Optional)

N. \_\_\_\_\_  
 E. \_\_\_\_\_  
 Zone \_\_\_\_\_ NAD27  NAD83   
 NAD83 Epoch \_\_\_\_\_  
 Elev. \_\_\_\_\_  
 Vert. Datum: NGVD29  NADV88   
 Meas. Units: Metric  Imperial

Corner - Left as found  Found and tagged  Established  Reestablished  Rebuilt

Identification and type of corner found: Evidence used to identify or procedure used to establish or reestablish the corner:

SEE SKETCH ON PAGE 2

A description of the physical condition of the monument as found and as set or reset:

SEE SKETCH ON PAGE 2

### SURVEYOR'S STATEMENT

This Corner Record was prepared by me or under my direction in conformance with the Land Surveyor's Act on Oct. 22nd, 2014.

Signed Douglas F. Banks P.L.S. or R.C.E. No.: 8159



### COUNTY SURVEYOR'S STATEMENT

This Corner Record was received October 24, 2014 and examined and filed November 25, 2014.

Signed Thomas M. Gau P.L.S. or R.C.E. No.: 26994

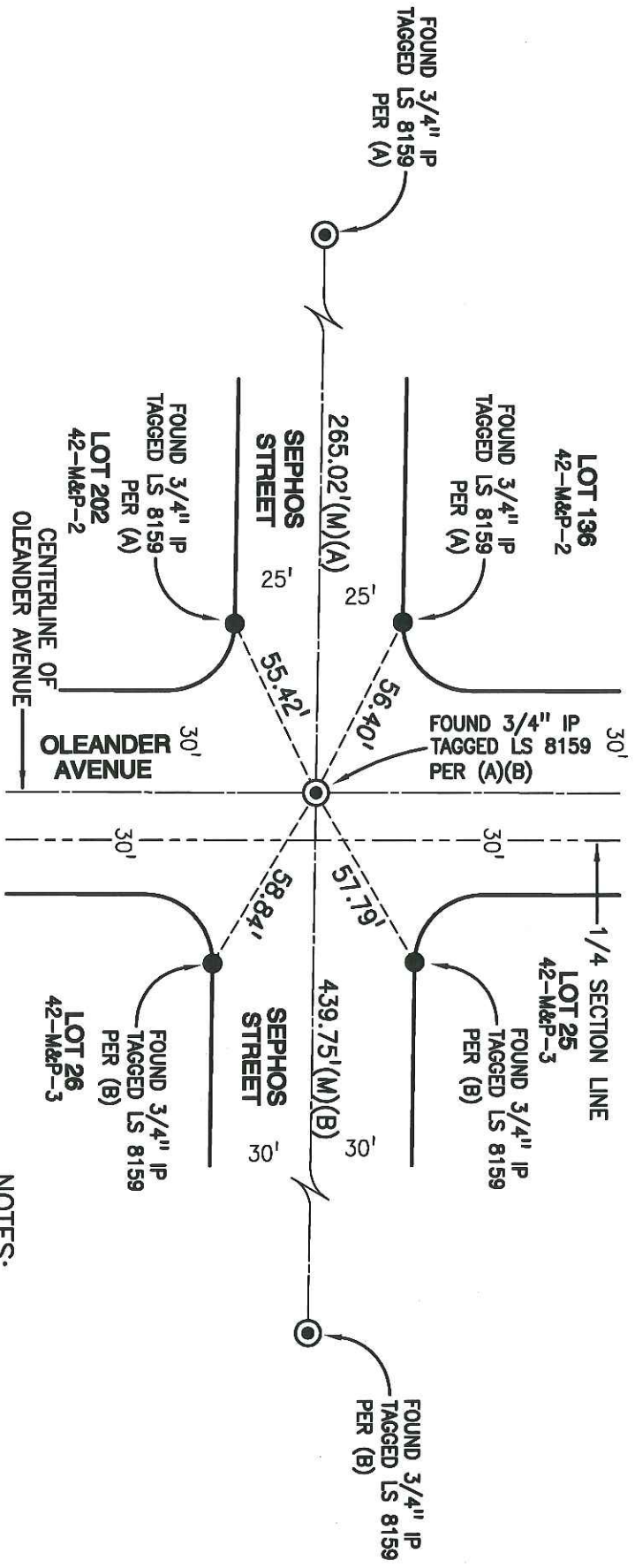
Title \_\_\_\_\_

County Surveyor's Comment \_\_\_\_\_





SCALE: 1"=50'



**LEGEND:**

- IP IRON PIPE
- M&P- MAPS & PLATS, BOOK, PAGE, S.J.C.R.
- S.J.C.R. SAN JOAQUIN COUNTY RECORDS

**REFERENCES:**

- (A) 42-M&P-2, S.J.C.R.
- (B) 42-M&P-3, S.J.C.R.
- (M) MEASURED DISTANCE

**NOTES:**

-  FOUND MONUMENT IN WELL AS NOTED
-  FOUND MONUMENT AS NOTED