

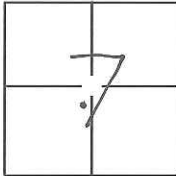
CORNER RECORD

Document Number CR-14-278

City of Manteca

County of San Joaquin, California

Brief Legal Description Southwest quarter of Section 7, Township 2 South, Range 7 East, M.D.B.M.



CORNER TYPE

Government Corner Control
Meander Property
Rancho Other

Date of Survey October 21, 2014

COORDINATES(Optional)

N. _____

E. _____

Zone _____ NAD27 NAD83

NAD83 Epoch _____

Elev. _____

Vert. Datum: NGVD29 NADV88

Meas. Units: Metric Imperial

Corner - Left as found Found and tagged Established Reestablished Rebuilt

Identification and type of corner found: Evidence used to identify or procedure used to establish or reestablish the corner:

SEE SKETCH ON PAGE 2

A description of the physical condition of the monument as found and as set or reset: _____

SEE SKETCH ON PAGE 2

SURVEYOR'S STATEMENT

This Corner Record was prepared by me or under my direction in conformance with the Land Surveyor's Act on Oct 22nd, 2014

Signed Douglas F. Banks P.L.S. or R.C.E. No.: 8159



COUNTY SURVEYOR'S STATEMENT

This Corner Record was received October 24, 2014 and examined and filed November 25, 2014

Signed Thomas M. Gau P.L.S. or R.C.E. No.: 26994

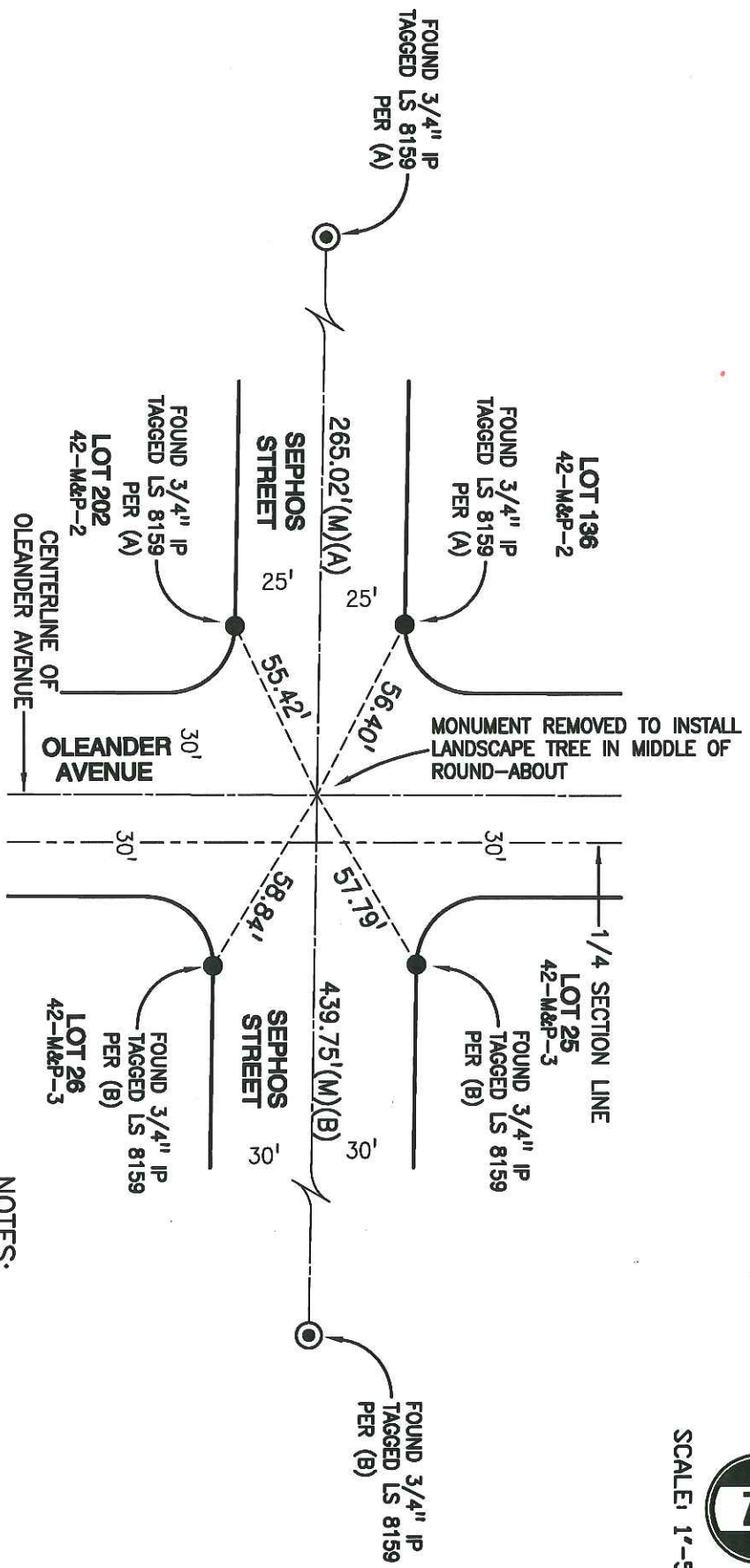
Title _____

County Surveyor's Comment _____





SCALE: 1"=50'



LEGEND:

- IP IRON PIPE
- M&P- MAPS & PLATS, BOOK, PAGE, S.J.C.R.
- S.J.C.R. SAN JOAQUIN COUNTY RECORDS

REFERENCES:

- (A) 42-M&P-2, S.J.C.R.
- (B) 42-M&P-3, S.J.C.R.
- (M) MEASURED DISTANCE

NOTES:

- FOUND MONUMENT IN WELL AS NOTED
- FOUND MONUMENT AS NOTED