

# CORNER RECORD

Document Number CR-14-215  
County of SAN JOAQUIN, California

City of STOCKTON

Brief Legal Description MONUMENT AT THE INTERSECTION OF ARCH ROAD AND FITE COURT  
LOCATED IN THE EAST HALF OF SECTION 28, T.1N, R.7E, M.D.B.&M.

NW 1/4	NE 1/4
SW 1/4	SE 1/4

### CORNER TYPE

### COORDINATES (Optional)

Government Corner  Control   
 Meander  Property   
 Rancho  Other

N \_\_\_\_\_  
 E \_\_\_\_\_  
 Zone \_\_\_\_\_ NAD27  NAD83   
 NAD83 Epoch \_\_\_\_\_  
 Elev. \_\_\_\_\_  
 Vert. Datum: NVGD29  NVGD88   
 Meas. Units: Metric  Imperial

SEC. 28 T.1N, R.7E Date of Survey 7-23-2014

Corner-- Left as found  Found and tagged  Established  Reestablished  Rebuilt

Identification and type of corner found: Evidence used to identify or procedure used to establish or reestablish the corner:  
SET 3/4" IRON PIPE WITH PLASTIC CAP STAMPED L.S. 6953 IN MONUMENT WELL, AT THE INTERSECTION OF  
ARCH ROAD AND FITE COURT. LOCATED IN THE EAST HALF OF SECTION 28, T.1N, R.7E, M.D.B.&M. FOUND  
WITNESS CORNERS AS SHOWN ON CORNER RECORD FILED AS DOCUMENT NUMBER CR-14-150,  
SAN JOAQUIN COUNTY RECORDS.

A description of the physical condition of the monument as found and as set or reset:  
SET 3/4" IRON PIPE WITH PLASTIC CAP STAMPED L.S. 6953 IN MONUMENT WELL FROM TIES AS SHOWN  
ON PAGE 2.

### SURVEYOR'S STATEMENT

This Corner Record was prepared by me or under my direction in conformance with  
the Land Surveyors' Act on AUGUST 22, 2014,



Signed [Signature] P.L.S. or R.C.E. Number 6953

### COUNTY SURVEYOR'S STATEMENT

This Corner Record was received September 2, 2014 and examined  
and filed September 16, 2014



Signed [Signature] P.L.S. or R.C.E. No: 26994

Title County Surveyor

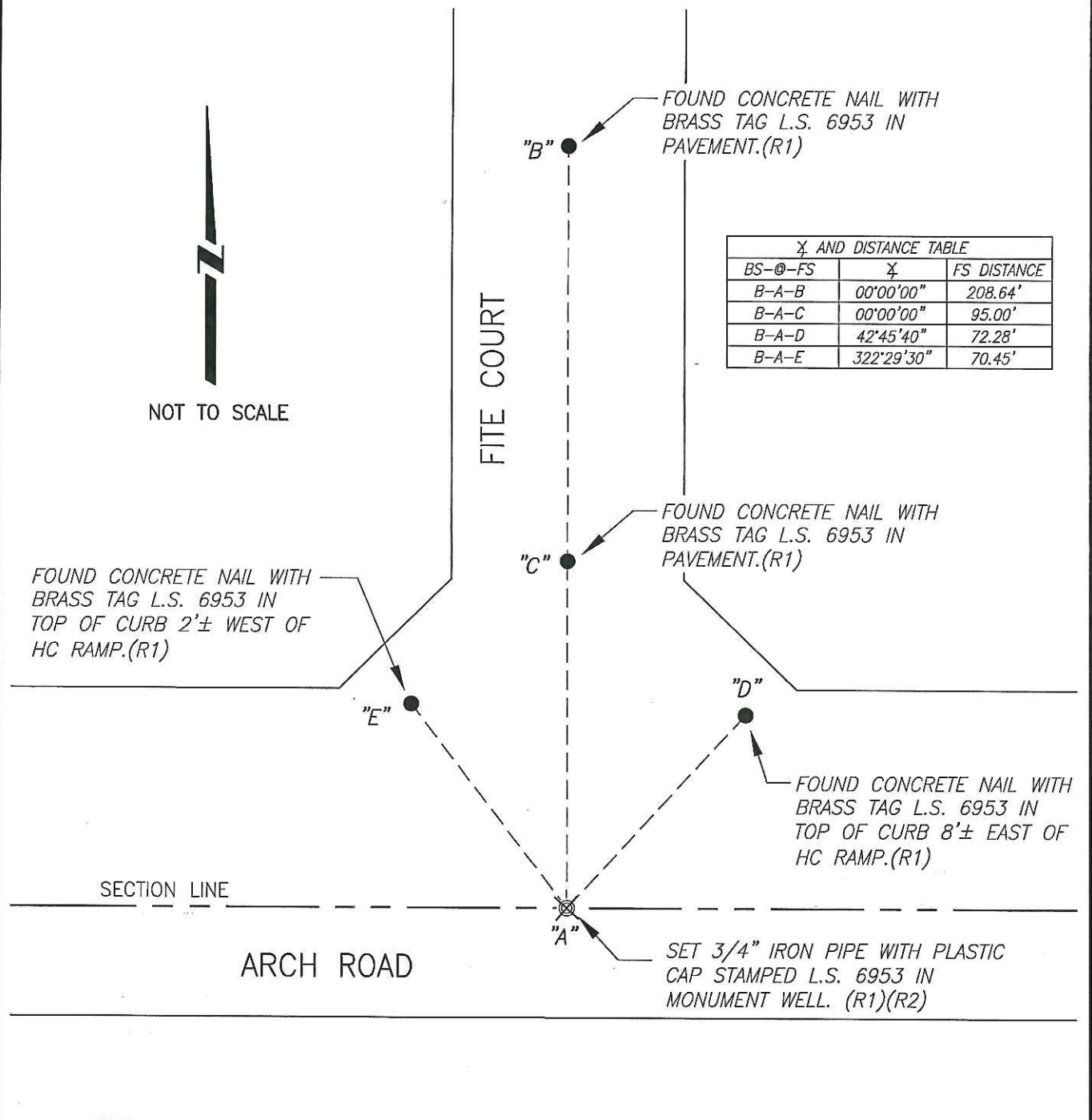
County Surveyor's Comment \_\_\_\_\_

**LEGEND:**

- ⊗ SET MONUMENT AS NOTED
- FOUND MONUMENT AS NOTED.
- S.J.C.R. DENOTES SAN JOAQUIN COUNTY RECORDS
- P.M. DENOTES PARCEL MAP
- C.R. DENOTES CORNER RECORD
- (M) MEASURED DISTANCE. ALL DISTANCES ARE MEASURED UNLESS NOTED OTHERWISE.

**REFERENCE:**

- (R1) C.R. 14-150, S.J.C.R.
- (R2) P.M. 21-196, S.J.C.R.



X AND DISTANCE TABLE		
BS-@-FS	X	FS DISTANCE
B-A-B	00°00'00"	208.64'
B-A-C	00°00'00"	95.00'
B-A-D	42°45'40"	72.28'
B-A-E	322°29'30"	70.45'

FITE COURT

ARCH ROAD

SECTION LINE