

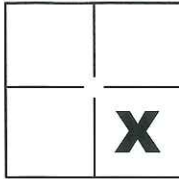
CORNER RECORD

Document Number CR-14-193

City of _____

County of San Joaquin, California

Brief Legal Description 3.16 Acre Parcel as shown on R.S. 16-161, S.J.C.R.



CORNER TYPE

Government Corner Control
 Meander Property
 Rancho Other

COORDINATES(Optional)

N. _____
 E. _____
 Zone _____ NAD27 NAD83
 NAD83 Epoch _____
 Elev. _____
 Vert. Datum: NGVD29 NADV88
 Meas. Units: Metric Imperial

Sec. 12, T.2N., R.8E.,
M.D.B. & M.

Date of Survey July 19, 2014

Corner - Left as found Found and tagged Established Reestablished Rebuilt

Identification and type of corner found: Evidence used to identify or procedure used to establish or reestablish the corner:

See sheet 2

A description of the physical condition of the monument as found and as set or reset: _____

See Sheet 2

SURVEYOR'S STATEMENT

This Corner Record was prepared by me or under my direction in conformance with the Land Surveyor's Act on July 25, 2014.

Signed Michael L. Quaratoro P.L.S. or R.C.E. No.: L.S. 4450



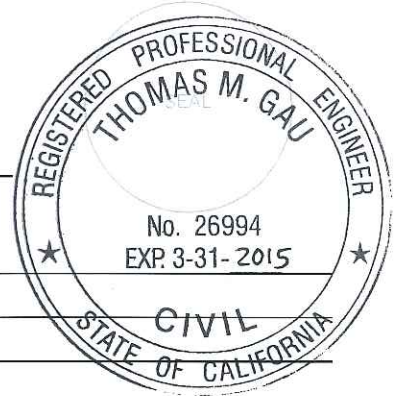
COUNTY SURVEYOR'S STATEMENT

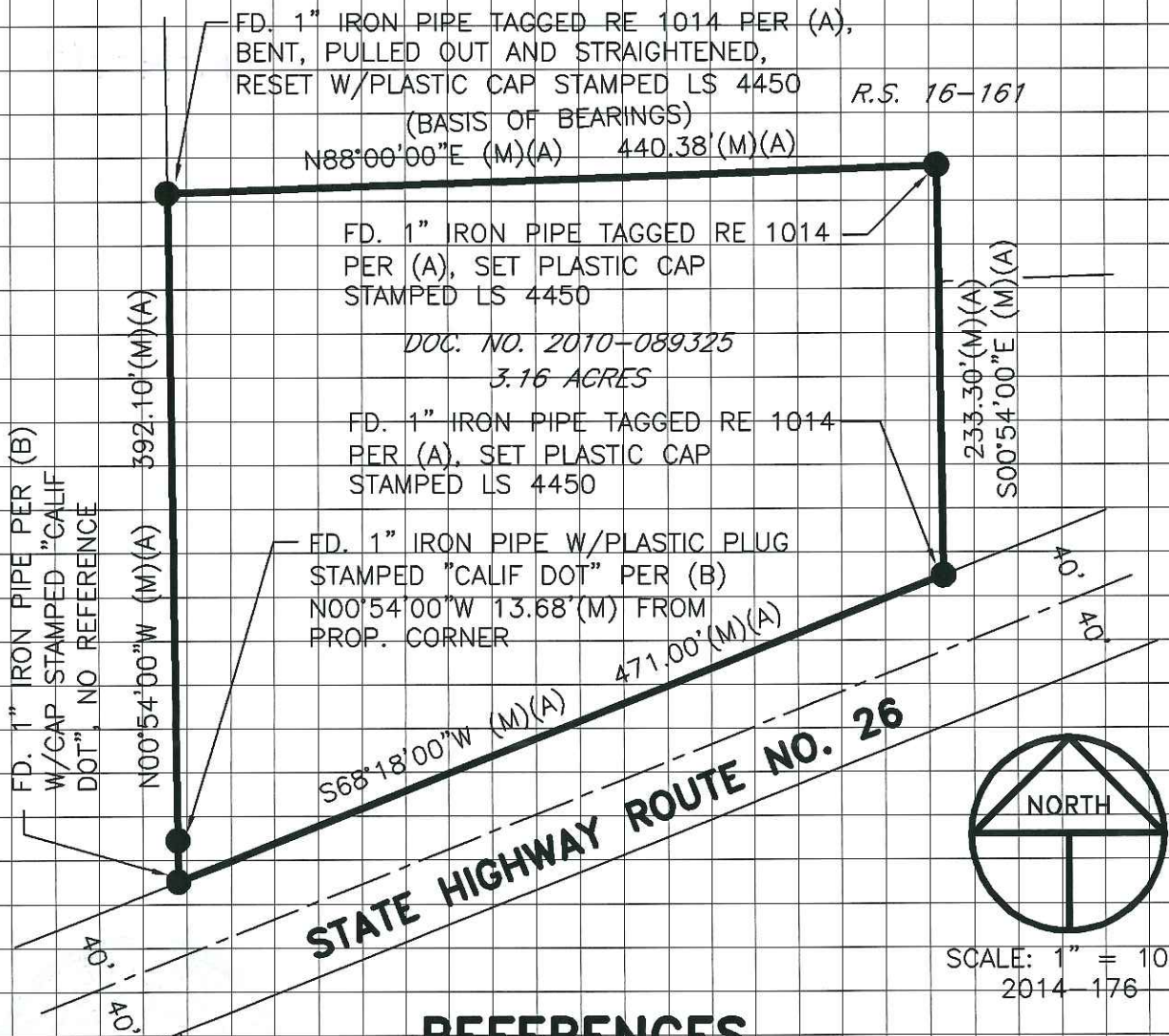
This Corner Record was received August 6, 2014 and examined and filed August 25, 2014.

Signed Thomas M. Gau P.L.S. or R.C.E. No.: 26994

Title County Surveyor

County Surveyor's Comment _____





REFERENCES

- (A) R.S. 16-161, S.J.C.R.
- (B) R.S. 34-17, S.J.C.R.

BASIS OF BEARINGS

THE BASIS OF BEARINGS FOR THIS SURVEY IS THE NORTH LINE OF THE 3.16 ACRE PARCEL, SHOWN ON R.S. 16-161 S.J.C.R., AS N.88°00'00"E.

LEGEND

- INDICATES FOUND MONUMENT AS NOTED
- FD. INDICATES FOUND ON THIS SURVEY
- (M) INDICATES MEASURED THIS SURVEY
- DOC. NO. INDICATES DOCUMENT NUMBER, S.J.C.R.
- R.S. INDICATES RECORD OF SURVEY, BOOK AND PAGE, S.J.C.R.
- S.J.C.R. INDICATES SAN JOAQUIN COUNTY RECORDS