

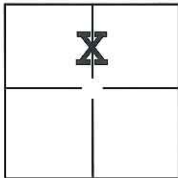
CORNER RECORD

Document Number CR-14-191

City of _____

County of San Joaquin, California

Brief Legal Description Portion of the South line of Parcel "B" per P.M. 7-63, S.J.C.R.



Sec. 7, T. 4S., R. 6E.,
M.D.B. & M.

CORNER TYPE

Government Corner Control
 Meander Property
 Rancho Other

Date of Survey November 9, 2013

COORDINATES(Optional)

N. _____
 E. _____
 Zone _____ NAD27 NAD83
 NAD83 Epoch _____
 Elev. _____
 Vert. Datum: NGVD29 NADV88
 Meas. Units: Metric Imperial

Corner - Left as found Found and tagged Established Reestablished Rebuilt

Identification and type of corner found: Evidence used to identify or procedure used to establish or reestablish the corner:

See Sheet 2

A description of the physical condition of the monument as found and as set or reset: See Sheet 2

SURVEYOR'S STATEMENT

This Corner Record was prepared by me or under my direction in conformance with
 the Land Surveyor's Act on July 22, 2014.

Signed Michael L. Quataoc P.L.S. or R.C.E. No.: L.S. 4450



COUNTY SURVEYOR'S STATEMENT

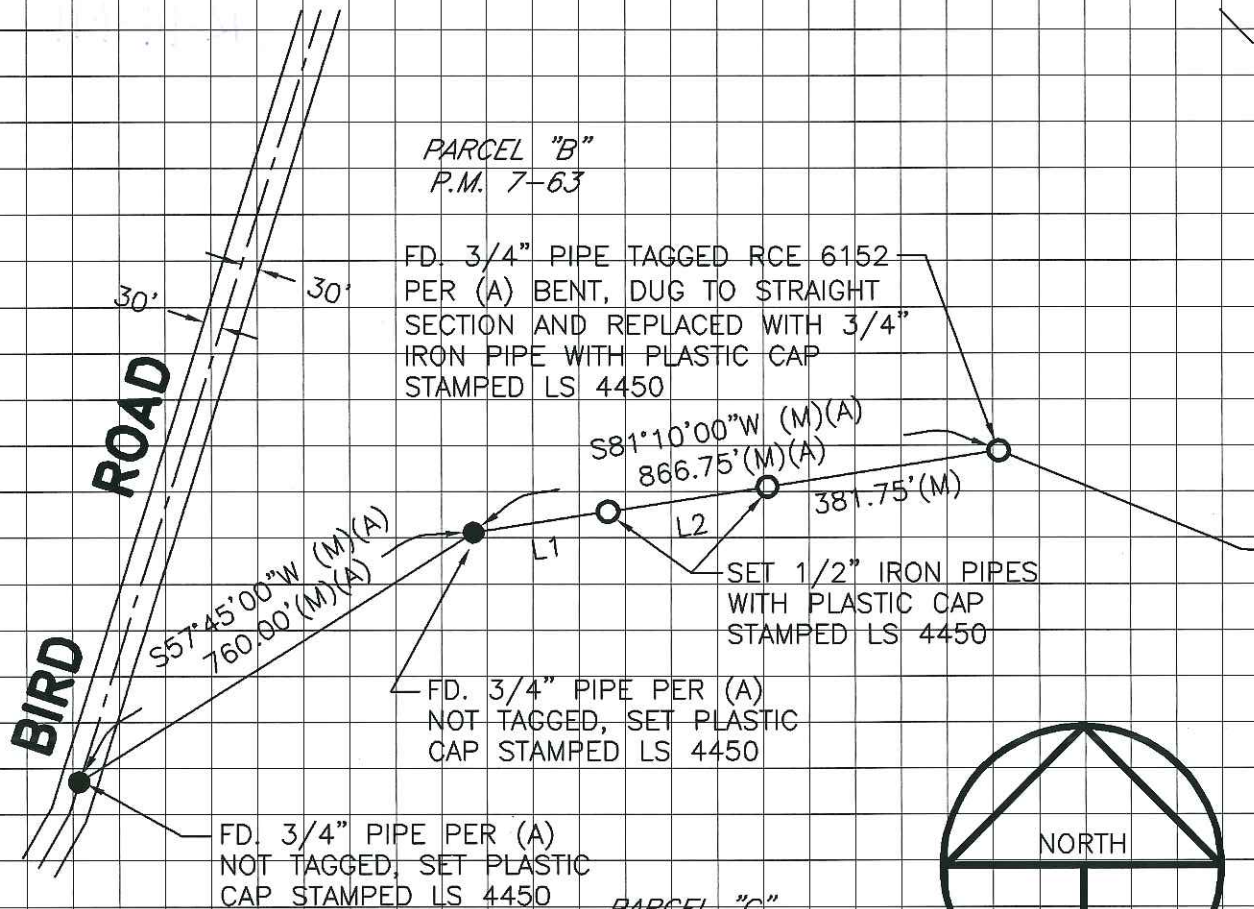
This Corner Record was received July 23, 2014 and examined
 and filed August 25, 2014.

Signed Thomas M. Gau P.L.S. or R.C.E. No.: 26994

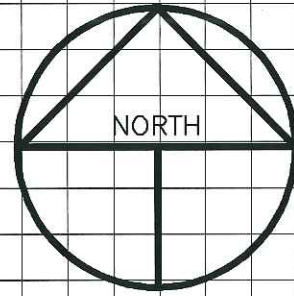
Title County Surveyor

County Surveyor's Comment _____





PARCEL "C"
P.M. 7-63



SCALE: 1" = 300'
2013-132

REFERENCE

(A) P.M. 7-63, S.J.C.R.

LEGEND

- INDICATES FOUND MONUMENT AS NOTED
- INDICATES SET MONUMENT AS NOTED
- FD. INDICATES FOUND ON THIS SURVEY
- (M) INDICATES MEASURED THIS SURVEY
- P.M. INDICATES PARCEL MAP, BOOK AND PAGE, S.J.C.R.
- S.J.C.R. INDICATES SAN JOAQUIN COUNTY RECORDS

LINE TABLE

LINE	BEARING	DISTANCE
L1	S81°10'00"W (M)(A)	222.00'(M)
L2	S81°10'00"W (M)(A)	263.00'(M)