

CORNER RECORD

Document Number CR-14-154

City of STOCKTON

County of SAN JOAQUIN, California

Brief Legal Description MONUMENTS AT THE INTERSECTION OF ARCH ROAD AND AUSTIN ROAD
LOCATED IN THE EAST HALF OF SECTION 27, T.1N, R.7E, M.D.B.&M.

CORNER TYPE

COORDINATES (Optional)

NW 1/4	NE 1/4
SW 1/4	SE 1/4

Government Corner Control
 Meander Property
 Rancho Other

N _____
 E _____
 Zone _____ NAD27 NAD83
 NAD83 Epoch _____
 Elev. _____
 Vert. Datum: NVGD29 NVGD88
 Meas. Units: Metric Imperial

SEC. 27 T.1N, R.7E

Date of Survey 5-2-2014

Corner- Left as found Found and tagged Established Reestablished Rebuilt

Identification and type of corner found: Evidence used to identify or procedure used to establish or reestablish the corner:
MONUMENTS AS SHOWN ON PAGE 2.

A description of the physical condition of the monument as found and as set or reset:
MONUMENTS ARE IN AN AREA OF RECONSTRUCTION, SET TIES AS SHOWN ON PAGE 2.

SURVEYOR'S STATEMENT

This Corner Record was prepared by me or under my direction in conformance with
 the Land Surveyors' Act on JUNE 5, 2014,



Signed [Signature] P.L.S. or R.C.E. Number 6953

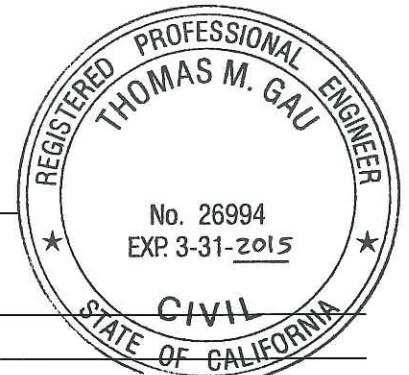
COUNTY SURVEYOR'S STATEMENT

This Corner Record was received June 17, 2014 and examined
 and filed July 30, 2014

Signed [Signature] P.L.S. or R.C.E. No: 26994

Title County Surveyor

County Surveyor's Comment _____



LEGEND:

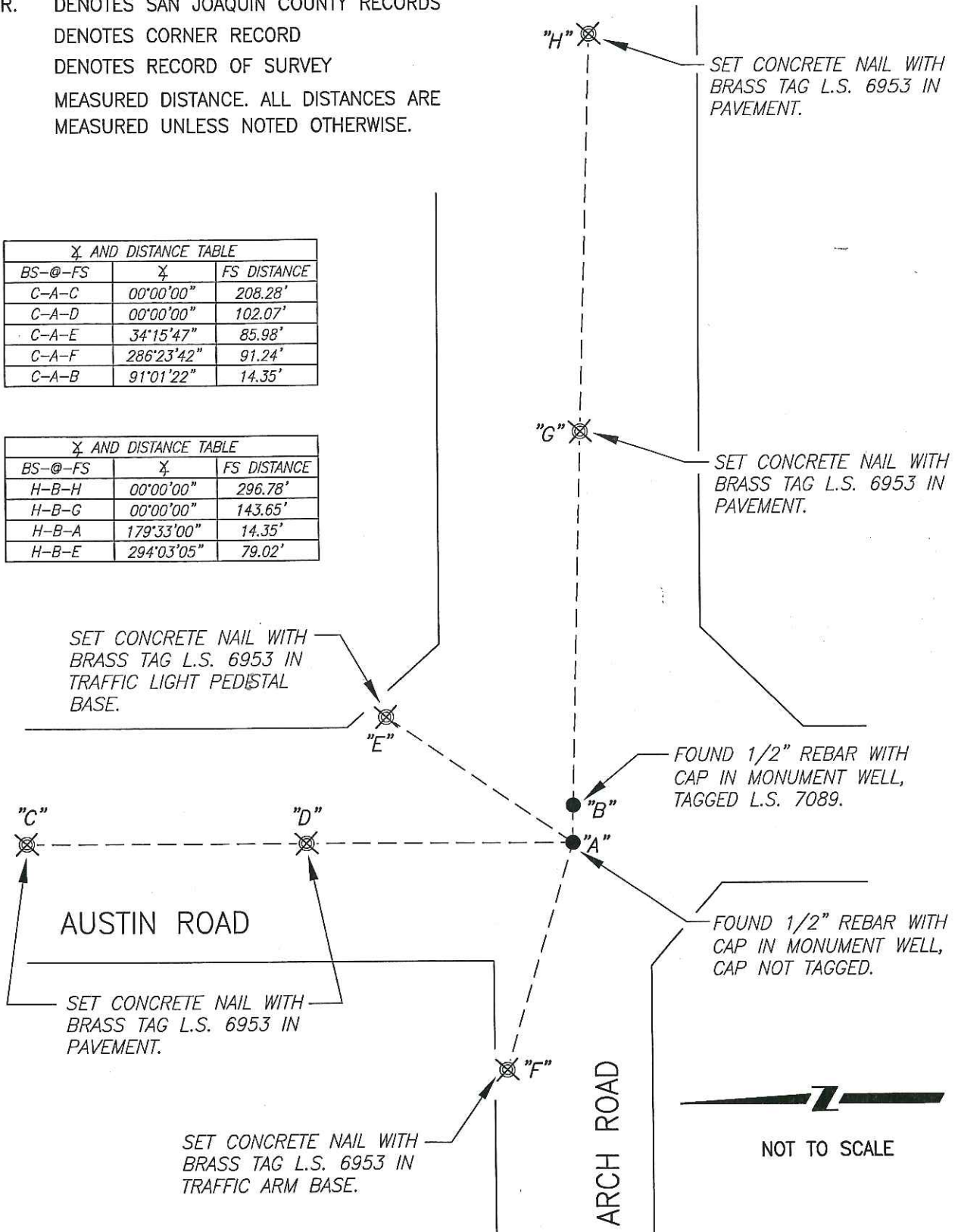
- ⊗ SET MONUMENT AS NOTED
- FOUND MONUMENT AS NOTED.
- S.J.C.R. DENOTES SAN JOAQUIN COUNTY RECORDS
- C.R. DENOTES CORNER RECORD
- R.S. DENOTES RECORD OF SURVEY
- (M) MEASURED DISTANCE. ALL DISTANCES ARE MEASURED UNLESS NOTED OTHERWISE.

REFERENCE:

- (R1) R.S. 32-96, S.J.C.R.
- (R2) C.R. 05-17, S.J.C.R.

X AND DISTANCE TABLE		
BS-@-FS	X	FS DISTANCE
C-A-C	00°00'00"	208.28'
C-A-D	00°00'00"	102.07'
C-A-E	34°15'47"	85.98'
C-A-F	286°23'42"	91.24'
C-A-B	91°01'22"	14.35'

X AND DISTANCE TABLE		
BS-@-FS	X	FS DISTANCE
H-B-H	00°00'00"	296.78'
H-B-G	00°00'00"	143.65'
H-B-A	179°33'00"	14.35'
H-B-E	294°03'05"	79.02'



FOUND 1/2" REBAR WITH CAP IN MONUMENT WELL, TAGGED L.S. 7089.

FOUND 1/2" REBAR WITH CAP IN MONUMENT WELL, CAP NOT TAGGED.

NOT TO SCALE