

CORNER RECORD

Document Number CR-14-152

City of STOCKTON

County of SAN JOAQUIN, California

Brief Legal Description MONUMENT AT THE INTERSECTION OF ARCH ROAD AND NEWCASTLE ROAD
LOCATED ON THE EAST LINE OF SECTION 28, T.1N, R.7E, M.D.B.&M.

NW 1/4	NE 1/4
SW 1/4	SE 1/4

CORNER TYPE

Government Corner Control
 Meander Property
 Rancho Other

COORDINATES (Optional)

N _____
 E _____
 Zone _____ NAD27 NAD83
 NAD83 Epoch _____
 Elev. _____
 Vert. Datum: NVGD29 NAD88
 Meas. Units: Metric Imperial

SEC. 28 T.1N, R.7E

Date of Survey 5-2-2014

Corner- Left as found Found and tagged Established Reestablished Rebuilt

Identification and type of corner found: Evidence used to identify or procedure used to establish or reestablish the corner:
FOUND 2-1/2" BRASS DISK STAMPED CITY OF STOCKTON 11S-06 LS 4334 IN MONUMENT WELL, AT THE
 INTERSECTION OF ARCH ROAD AND NEWCASTLE ROAD LOCATED ON THE EAST LINE OF SECTION 28, T.1N,
 R.7E, M.D.B.&M. FOUND MONUMENT AS SHOWN ON RECORD OF SURVEY FILED IN BOOK 32 OF SURVEYS
 AT PAGE 96, SAN JOAQUIN COUNTY RECORDS.

A description of the physical condition of the monument as found and as set or reset:
MONUMENT IS IN AREA OF RECONSTRUCTION, SET TIES AS SHOWN ON PAGE 2.

SURVEYOR'S STATEMENT

This Corner Record was prepared by me or under my direction in conformance with
 the Land Surveyors' Act on JUNE 5, 2014,



Signed [Signature] P.L.S. or R.C.E. Number 6953

COUNTY SURVEYOR'S STATEMENT

This Corner Record was received June 17, 2014 and examined
 and filed July 30, 2014

Signed [Signature] P.L.S. or R.C.E. No: 26994

Title County Surveyor

County Surveyor's Comment _____



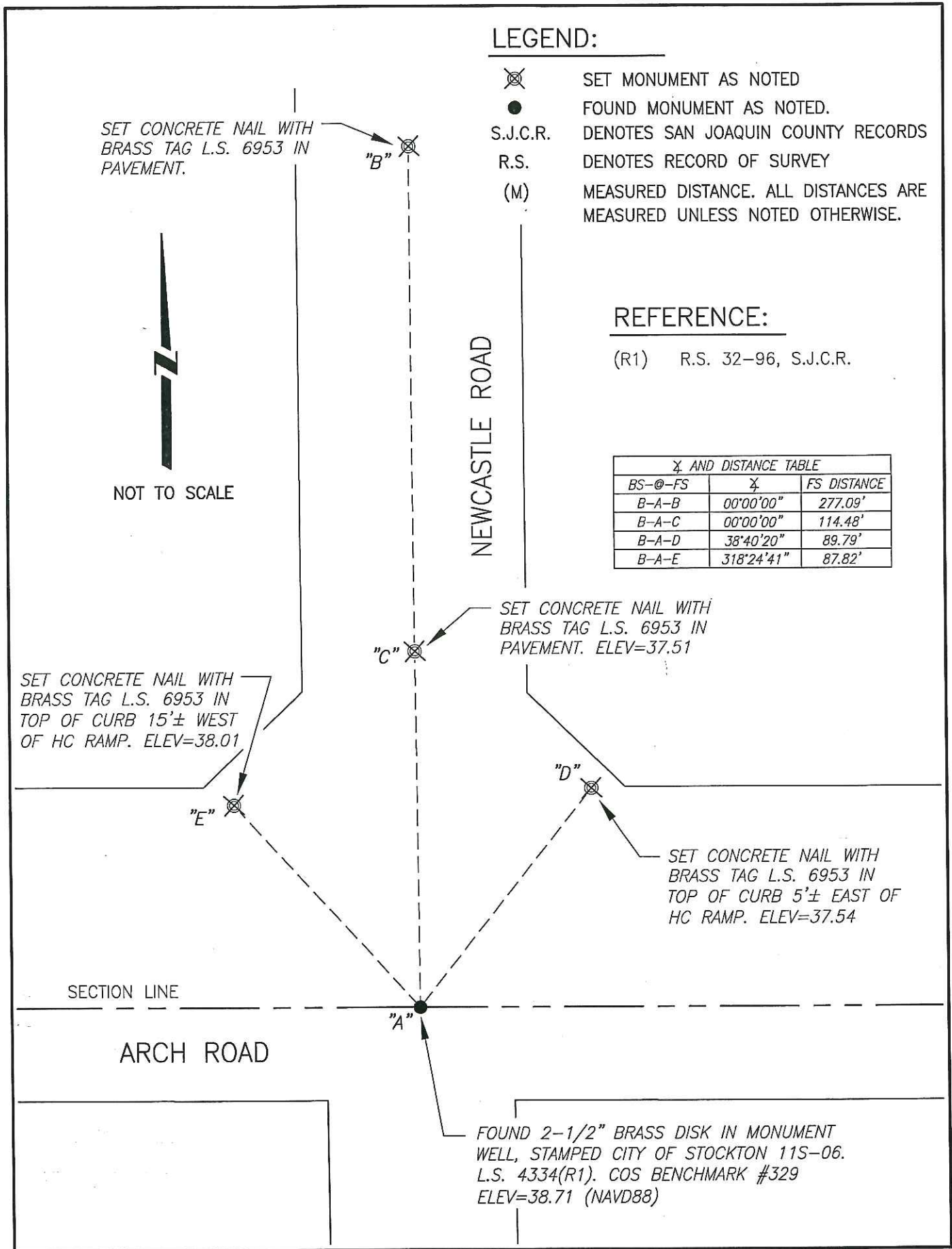
LEGEND:

- ⊗ SET MONUMENT AS NOTED
- FOUND MONUMENT AS NOTED.
- S.J.C.R. DENOTES SAN JOAQUIN COUNTY RECORDS
- R.S. DENOTES RECORD OF SURVEY
- (M) MEASURED DISTANCE. ALL DISTANCES ARE MEASURED UNLESS NOTED OTHERWISE.

REFERENCE:

(R1) R.S. 32-96, S.J.C.R.

X AND DISTANCE TABLE		
BS-@-FS	X	FS DISTANCE
B-A-B	00°00'00"	277.09'
B-A-C	00°00'00"	114.48'
B-A-D	38°40'20"	89.79'
B-A-E	318°24'41"	87.82'



SET CONCRETE NAIL WITH BRASS TAG L.S. 6953 IN PAVEMENT.

"B"



NOT TO SCALE

NEWCASTLE ROAD

SET CONCRETE NAIL WITH BRASS TAG L.S. 6953 IN PAVEMENT. ELEV=37.51

"C"

SET CONCRETE NAIL WITH BRASS TAG L.S. 6953 IN TOP OF CURB 15'± WEST OF HC RAMP. ELEV=38.01

"E"

"D"

SET CONCRETE NAIL WITH BRASS TAG L.S. 6953 IN TOP OF CURB 5'± EAST OF HC RAMP. ELEV=37.54

SECTION LINE

ARCH ROAD

"A"

FOUND 2-1/2" BRASS DISK IN MONUMENT WELL, STAMPED CITY OF STOCKTON 11S-06. L.S. 4334(R1). COS BENCHMARK #329 ELEV=38.71 (NAVD88)