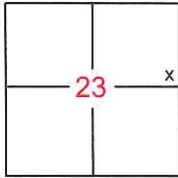


CORNER RECORD

Document Number CR-14-149
 County of San Joaquin, California

City of _____

Brief Legal Description Easterly line of 9.77 acres parcel per R.S. 38-81, S.J.C.R.



SEC. 23
 T. 1 N., R. 7 E.

CORNER TYPE

Government Corner Control
 Meander Property
 Rancho Other

Date of Survey _____

COORDINATES(Optional)

N. _____
 E. _____
 Zone _____ NAD27 NAD83
 NAD83 Epoch _____
 Elev. _____
 Vert. Datum: NGVD29 NADV88
 Meas. Units: Metric Imperial

Corner - Left as found Found and tagged Established Reestablished Rebuilt

Identification and type of corner found: Evidence used to identify or procedure used to establish or reestablish the corner:

See Sheet 2 for details

A description of the physical condition of the monument as found and as set or reset: See Sheet 2 for details

SURVEYOR'S STATEMENT

This Corner Record was prepared by me or under my direction in conformance with the Land Surveyor's Act on JULY 7TH, 2014.

Signed *Keith Kelly* P.L.S. or R.C.E. No.: L.S. 8599



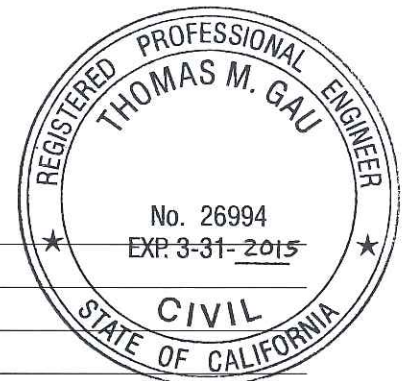
COUNTY SURVEYOR'S STATEMENT

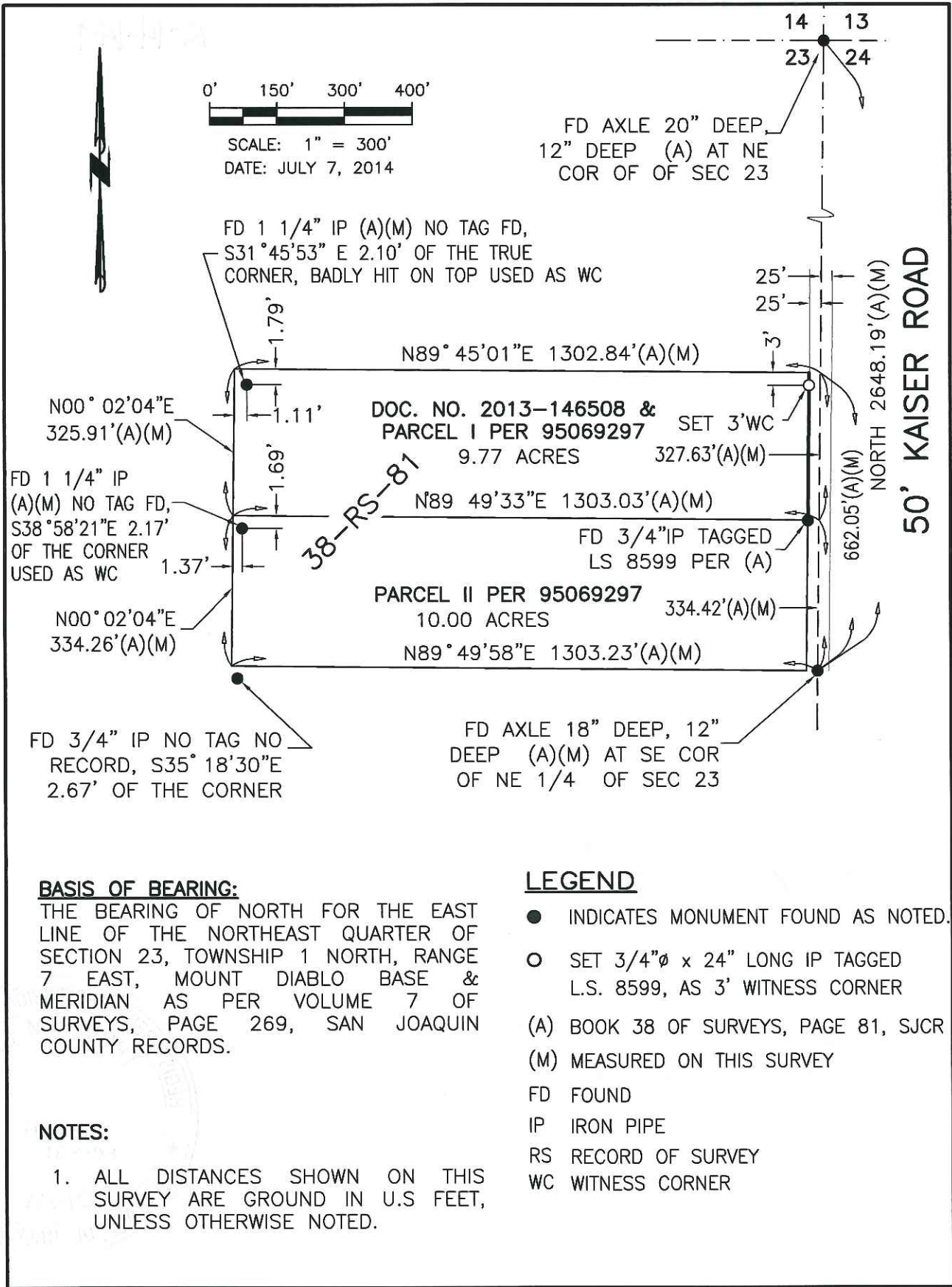
This Corner Record was received July 9th, 2014 and examined and filed July 30, 2014.

Signed *Thomas M. Gau* P.L.S. or R.C.E. No.: 26994

Title County Surveyor

County Surveyor's Comment _____





0' 150' 300' 400'
 SCALE: 1" = 300'
 DATE: JULY 7, 2014

FD AXLE 20" DEEP,
 12" DEEP (A) AT NE
 COR OF OF SEC 23

FD 1 1/4" IP (A)(M) NO TAG FD,
 S31°45'53" E 2.10' OF THE TRUE
 CORNER, BADLY HIT ON TOP USED AS WC

N00°02'04"E
 325.91'(A)(M)
 FD 1 1/4" IP
 (A)(M) NO TAG FD,
 S38°58'21"E 2.17'
 OF THE CORNER
 USED AS WC
 1.37'
 N00°02'04"E
 334.26'(A)(M)

DOC. NO. 2013-146508 &
 PARCEL I PER 95069297 SET 3'WC
 9.77 ACRES 327.63'(A)(M)

N89°49'33"E 1303.03'(A)(M)

FD 3/4"IP TAGGED
 LS 8599 PER (A)

PARCEL II PER 95069297 334.42'(A)(M)
 10.00 ACRES
 N89°49'58"E 1303.23'(A)(M)

FD 3/4" IP NO TAG NO
 RECORD, S35°18'30"E
 2.67' OF THE CORNER

FD AXLE 18" DEEP, 12"
 DEEP (A)(M) AT SE COR
 OF NE 1/4 OF SEC 23

BASIS OF BEARING:

THE BEARING OF NORTH FOR THE EAST
 LINE OF THE NORTHEAST QUARTER OF
 SECTION 23, TOWNSHIP 1 NORTH, RANGE
 7 EAST, MOUNT DIABLO BASE &
 MERIDIAN AS PER VOLUME 7 OF
 SURVEYS, PAGE 269, SAN JOAQUIN
 COUNTY RECORDS.

LEGEND

- INDICATES MONUMENT FOUND AS NOTED.
- SET 3/4"Ø x 24" LONG IP TAGGED
 L.S. 8599, AS 3' WITNESS CORNER
- (A) BOOK 38 OF SURVEYS, PAGE 81, SJCR
- (M) MEASURED ON THIS SURVEY
- FD FOUND
- IP IRON PIPE
- RS RECORD OF SURVEY
- WC WITNESS CORNER

NOTES:

1. ALL DISTANCES SHOWN ON THIS
 SURVEY ARE GROUND IN U.S FEET,
 UNLESS OTHERWISE NOTED.