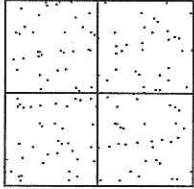


CORNER RECORD

Document Number CR-14-132
City of _____ County of San Joaquin, California

Brief Legal Description MIDDLEFIELD AVENUE 279' ± EAST OF MISSION ROAD
(WITHIN SECTION A, C.M. WEBER GRANT)



CORNER TYPE
Government Corner Control
Meander Property
Rancho Other
Date of Survey June 23, 2014

COORDINATES (Optional)
N. _____
E. _____
Zone _____ NAD27 NAD83
NAD83 Epoch _____
Elev. _____
Vert. Datum: NGVD29 NAVD88
Meas. Units: Metric Imperial

Corner - Left as found Found and tagged Established Reestablished Rebuilt

Identification and type of corner found: Evidence used to identify or procedure used to establish or reestablish the corner:
SEE SKETCH ON BACKSIDE.

A description of the physical condition of the monument as found and as set or reset:
SEE SKETCH ON BACKSIDE.

SURVEYOR'S STATEMENT

This Corner Record was prepared by me or under my direction in conformance with the Land Surveyors' Act on June 24, 2014.

Signed James E. Hart P.L.S. Number 8657

COUNTY SURVEYOR'S STATEMENT

This Corner Record was received June 24, 2014 and examined and filed July 30, 2014.

Signed Thomas M. Gau R.C.E. No. 26994
Title County Surveyor

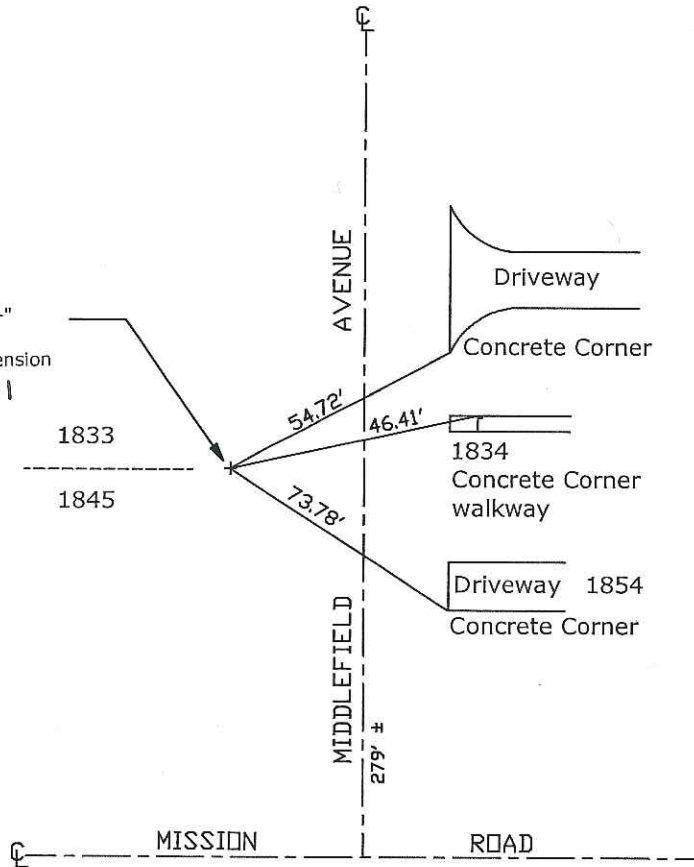
County Surveyor's Comment _____





N.T.S.

Placed
New chiseled "+"
in sidewalk
@ property line extension
per CR 14-81



Note: Found Monuments are not tagged unless otherwise noted.

"No Attempt Was Made to Verify the Monument(s)"

- Set=Conc. Nail with Brass Washer Stamped "S.J. Co.", unless otherwise noted
- Fd.=Found Conc. Nail with Brass Washer Stamped "S.J. Co.", unless otherwise noted
- CR=Corner Record
- FP=Fence Post
- JP=Joint Pole
- LP=Light Pole
- PP=Power Pole
- GP=Guy Pole
- SP=Service Pole
- TP=Telephone Pole
- S.F.N.=Searched Found Nothing
- N.T.S.=Not To Scale
- M&P=Maps & Plats
- PM=Parcel Map
- RS=Record of Survey
- FB=Field Book