

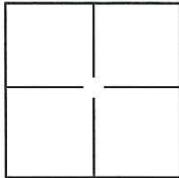
CORNER RECORD

Document Number CR-14-106

City of _____

County of San Joaquin, California

Brief Legal Description Line between Set 3/4" Iron Pipe and Point "107A", as shown on R.S. 37-126



Portion of Projected Sec. 11 and 12
T.1S., R.5E., M.D.B. & M.

CORNER TYPE

Government Corner Control
 Meander Property
 Rancho Other

Date of Survey May 10, 2014

COORDINATES(Optional)

N. _____
 E. _____
 Zone _____ NAD27 NAD83
 NAD83 Epoch _____
 Elev. _____
 Vert. Datum: NGVD29 NADV88
 Meas. Units: Metric Imperial

Corner - Left as found Found and tagged Established Reestablished Rebuilt

Identification and type of corner found: Evidence used to identify or procedure used to establish or reestablish the corner:

See Sheet 2

A description of the physical condition of the monument as found and as set or reset: _____

See Sheet 2

SURVEYOR'S STATEMENT

This Corner Record was prepared by me or under my direction in conformance with the Land Surveyor's Act on May 21, 2014.

Signed Michael L. Quartacci P.L.S. or R.C.E. No.: _____ L.S. 4450



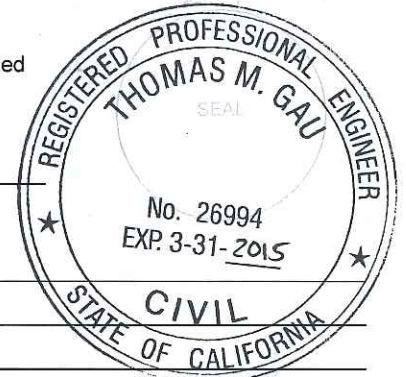
COUNTY SURVEYOR'S STATEMENT

This Corner Record was received May 23, 2014 and examined and filed June 13, 2014.

Signed Thomas M. Gau P.L.S. or R.C.E. No.: 26994

Title County Surveyor

County Surveyor's Comment _____



WING LEVEE ROAD

BASIS OF BEARINGS

THE BASIS OF BEARINGS FOR THIS SURVEY IS THE LINE BETWEEN THE SET 3/4" PIPE AND POINT "107A", SHOWN ON R.S. 37-126, S.J.C.R., AS EAST.

LEGEND

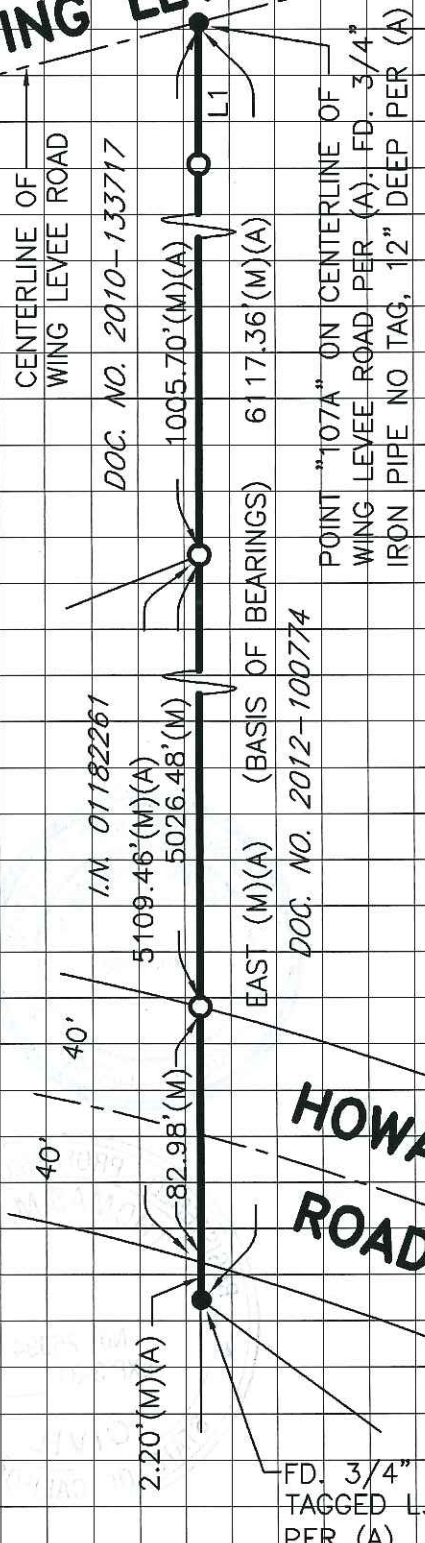
- INDICATES FOUND MONUMENT AS NOTED
- INDICATES SET 3/4" X 30" IRON PIPE W/PLASTIC CAP STAMPED L.S. 4450
- FD. INDICATES FOUND ON THIS SURVEY
- (M) INDICATES MEASURED THIS SURVEY
- I.N. INDICATES INSTRUMENT NUMBER, S.J.C.R.
- DOC. NO. INDICATES DOCUMENT NUMBER, S.J.C.R.
- R.S. INDICATES RECORD OF SURVEY, BOOK AND PAGE, S.J.C.R.
- S.J.C.R. INDICATES SAN JOAQUIN COUNTY RECORDS

REFERENCE

(A) R.S. 37-126, S.J.C.R.

LINE TABLE

LINE	BEARING	DISTANCE
L1	EAST(M)(A)	46.00'(M)



R.S. 37-126