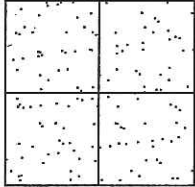


CORNER RECORD

Document Number CR-14-104  
County of San Joaquin, California

City of \_\_\_\_\_

Brief Legal Description ROBERTS ROAD @ CARLIN ROAD  
(WITHIN SECTION 17, TOWNSHIP 1 SOUTH, RANGE 6 EAST, MOUNT DIABLO BASE & MERIDIAN)



CORNER TYPE

- Government Corner  Control
- Meander  Property
- Rancho  Other

Date of Survey May 30, 2014

COORDINATES (Optional)

N. \_\_\_\_\_  
 E. \_\_\_\_\_  
 Zone \_\_\_\_\_ NAD27  NAD83   
 NAD83 Epoch \_\_\_\_\_  
 Elev. \_\_\_\_\_  
 Vert. Datum: NGVD29  NAVD88   
 Meas. Units: Metric  Imperial

Corner - Left as found  Found and tagged  Established  Reestablished  Rebuilt

Identification and type of corner found: Evidence used to identify or procedure used to establish or reestablish the corner:  
SEE SKETCH ON BACKSIDE.

A description of the physical condition of the monument as found and as set or reset:  
SEE SKETCH ON BACKSIDE.

SURVEYOR'S STATEMENT

This Corner Record was prepared by me or under my direction in conformance with the Land Surveyors' Act on June 02, 2014.

Signed James E. Hart P.L.S. Number 8657

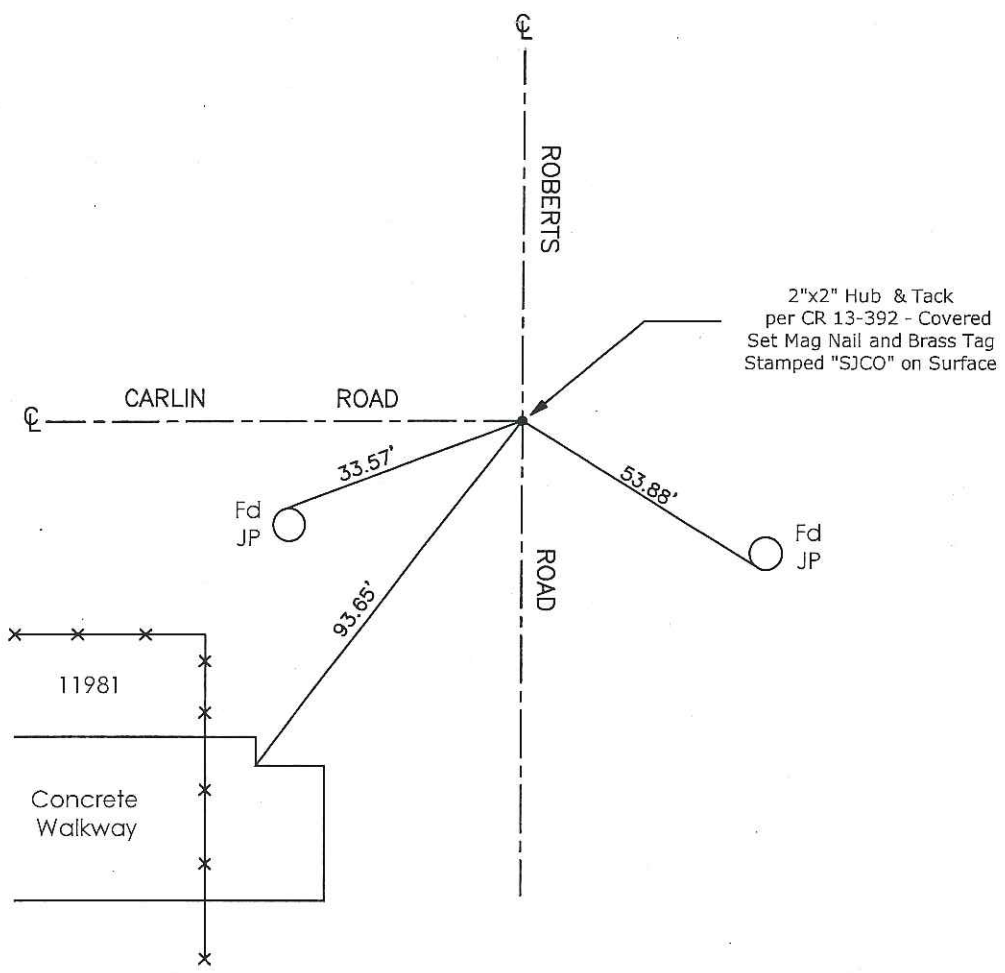
COUNTY SURVEYOR'S STATEMENT

This Corner Record was received June 2, 2014 and examined and filed June 18, 2014.

Signed Thomas M. Gau R.C.E. No. 26994  
Title County Surveyor

County Surveyor's Comment \_\_\_\_\_





Note: Found Monuments are not tagged unless otherwise noted.

"No Attempt Was Made to Verify the Monument(s)"

- FP=Fence Post
- CR=Corner Record
- GP=Guy Post
- JP=Joint Pole
- LP=Lamp Pole
- PP=Power Pole
- RS=Record of Survey
- SP=Service Pole
- TP=Telephone Pole
- SDI=Storm Drain Inlet
- S.F.N=Searched Found Nothing
- N.T.S.=Not To Scale
- Set=Conc. Nail with Brass Washer Stamped "S.J. Co.", unless otherwise noted
- Fd=Found Conc. Nail with Brass Washer Stamped "S.J.Co.", Unless otherwise noted