

CORNER RECORD

Document Number CR-14-78

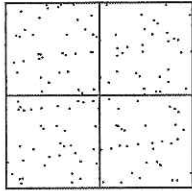
City of _____

County of San Joaquin, California

Brief Legal Description JACK TONE ROAD 1333' +/- SOUTH OF SARGENT ROAD
(ON SECTION 12 EAST LINE, TOWNSHIP 3 NORTH, RANGE 7 EAST, MOUNT DIABLO BASE AND MERIDIAN)

CORNER TYPE

COORDINATES (Optional)



Government Corner Control
Meander Property
Rancho Other
Date of Survey April 23, 2014

N. _____
E. _____
Zone _____ NAD27 NAD83
NAD83 Epoch _____
Elev. _____
Vert. Datum: NGVD29 NAVD88
Meas. Units: Metric Imperial

Corner - Left as found Found and tagged Established Reestablished Rebuilt

Identification and type of corner found: Evidence used to identify or procedure used to establish or reestablish the corner:
SEE SKETCH ON BACKSIDE.

A description of the physical condition of the monument as found and as set or reset: _____
SEE SKETCH ON BACKSIDE.

SURVEYOR'S STATEMENT

This Corner Record was prepared by me or under my direction in conformance with the Land Surveyors' Act on April 28, 2014.

Signed James E. Hart P.L.S. Number 8657

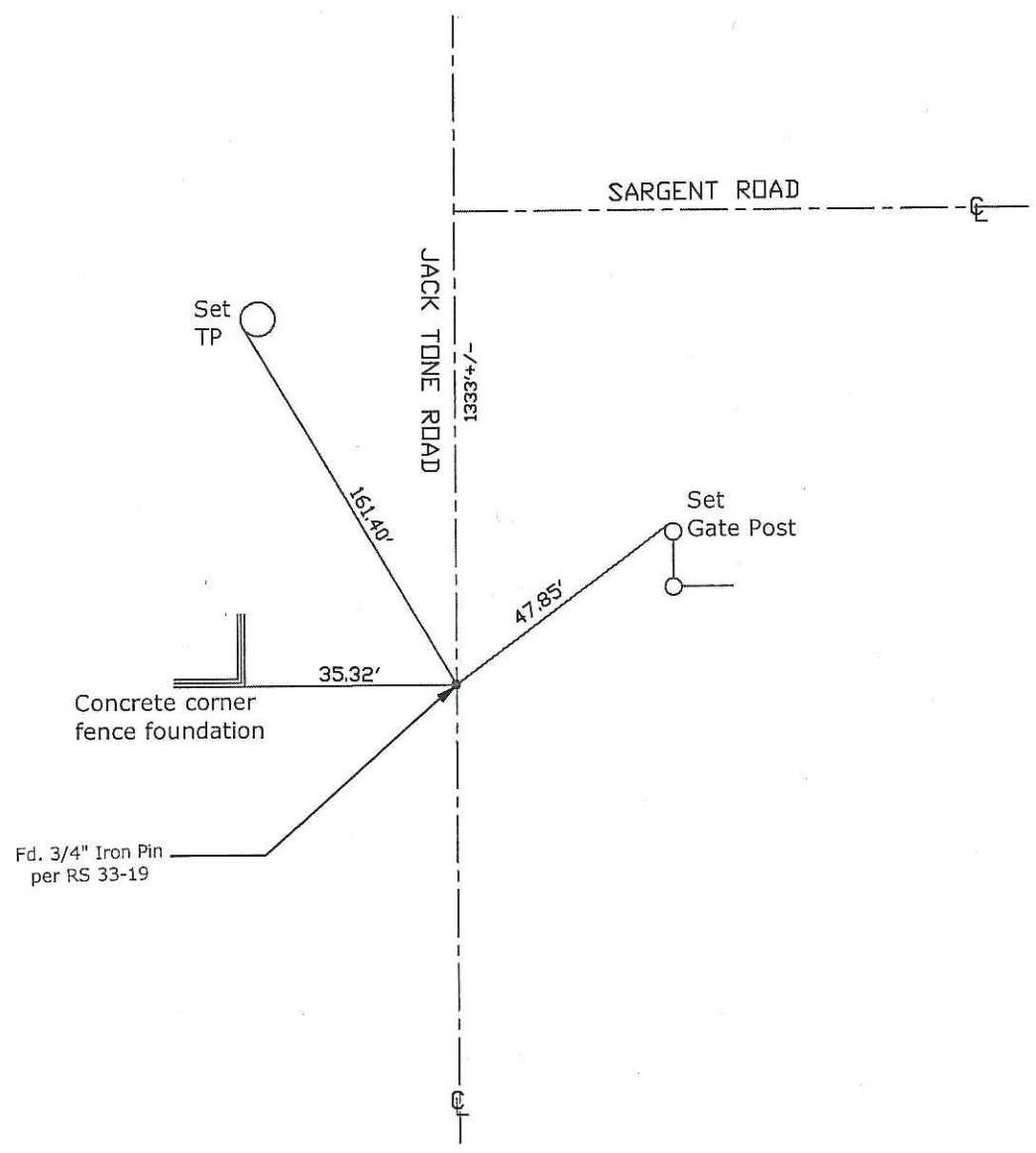
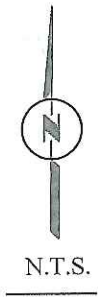
COUNTY SURVEYOR'S STATEMENT

This Corner Record was received April 28, 2014 and examined and filed May 6, 2014.

Signed Thomas M. Gau R.C.E. No. 26994
Title County Surveyor

County Surveyor's Comment _____





Note: Found Monuments are not tagged unless otherwise noted.

"No Attempt Was Made to Verify the Monument(s)"

- Set=Conc. Nail with Brass Washer Stamped "S.J. Co.", unless otherwise noted
- Fd.=Found Conc. Nail with Brass Washer Stamped "S.J. Co.", unless otherwise noted
- CR=Corner Record
- FP=Fence Post
- JP=Joint Pole
- LP=Light Pole
- PP=Power Pole
- GP=Guy Pole
- SP=Service Pole
- TP=Telephone Pole
- S.F.N.=Searched Found Nothing
- N.T.S.=Not To Scale
- M&P=Maps & Plats
- PM=Parcel Map
- RS=Record of Survey
- FB=Field Book