

CORNER RECORD

Document Number

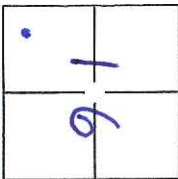
CR-14-59

City of STOCKTON

County of SAN JOAQUIN

California

Brief Legal Description PARCEL 5, AS SHOWN IN BK. 1 OF P.M., PG. 53, SAN JOAQUIN COUNTY RECORDS



CORNER TYPE

Government Corner Control
 Meander Property
 Rancho Other

COORDINATES(Optional)

N. _____
 E. _____
 Zone _____ NAD27 NAD83
 NAD83 Epoch _____
 Elev. _____
 Vert. Datum: NGVD29 NADV88
 Meas. Units: Metric Imperial

C.M. WEBBER GRANT

Date of Survey March 6, 2014

Corner - Left as found Found and tagged Established Reestablished Rebuilt

Identification and type of corner found: Evidence used to identify or procedure used to establish or reestablish the corner:

SEARCHED FOUND NOTHING. SET SURVEY MONUMENT BY USING FOUND MONUMENTS AND RECORD DIMENSIONS AS SHOWN ON PARCEL MAP, BOOK 1, PAGE 53 AND PARCEL MAP, BOOK 1, PAGE 83. SEE ATTACHED PLAT.

A description of the physical condition of the monument as found and as set or reset: SEARCHED FOUND NOTHING, SET WITH A 3/4" IRON PIN CAPPED L.S. 7600 AND CHISELED CROSSES TAGGED L.S. 7600.

SURVEYOR'S STATEMENT

This Corner Record was prepared by me or under my direction in conformance with the Land Surveyor's Act on MARCH 6, 2014.

Signed gr cw P.L.S. or R.C.E. No.: L.S. 7600

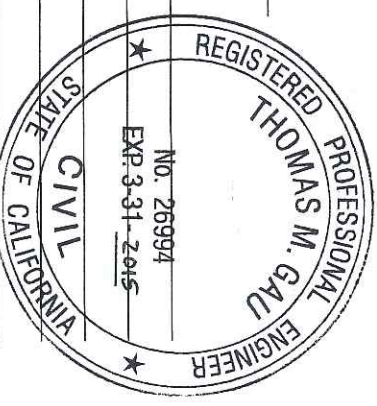
COUNTY SURVEYOR'S STATEMENT

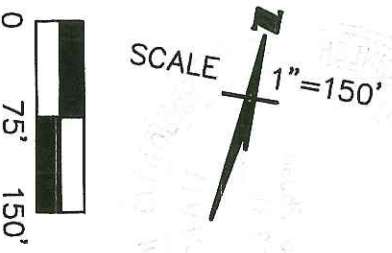
This Corner Record was received March 11, 2014 and examined

and filed March 24, 2014.

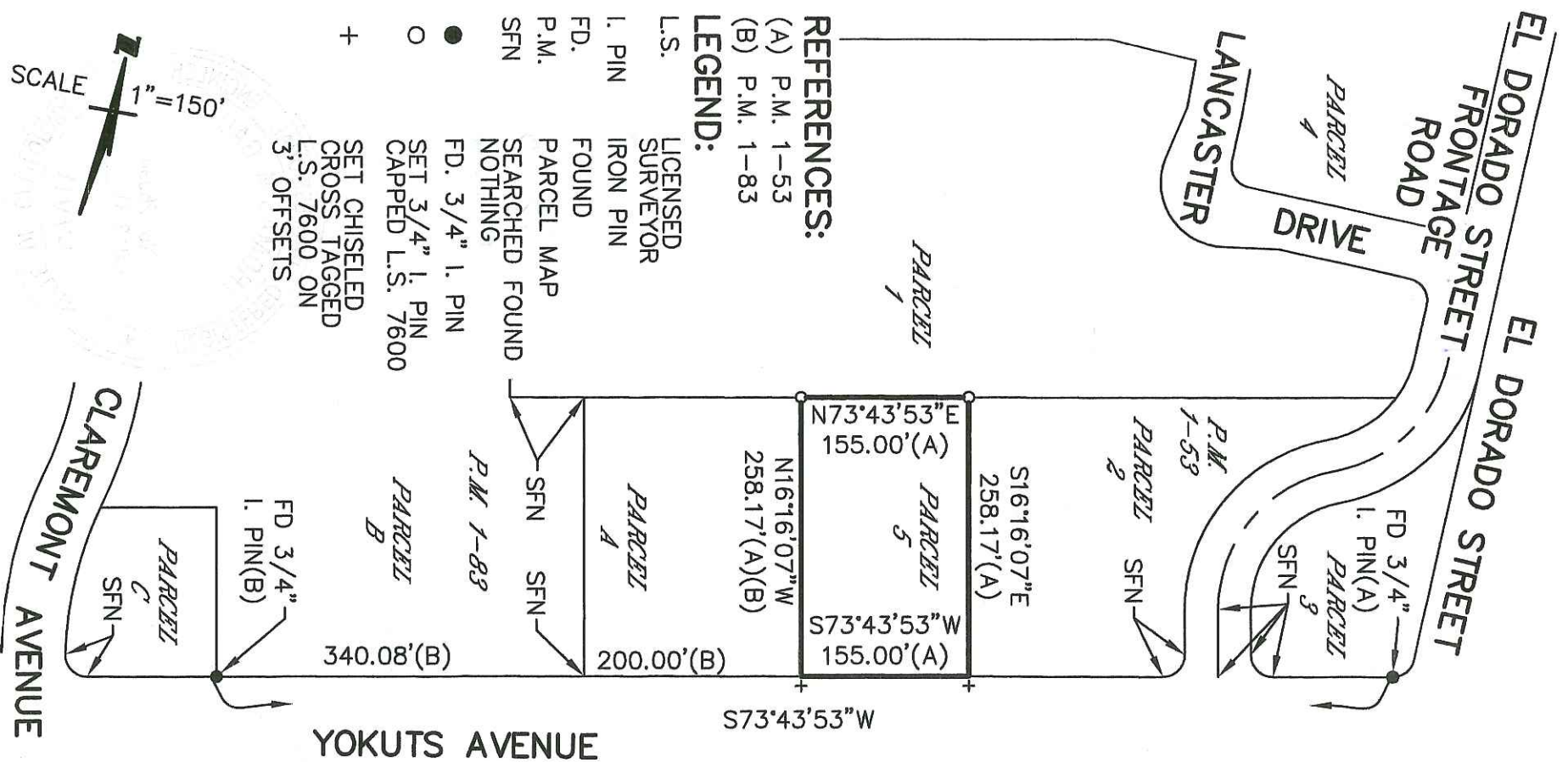
Signed Thomas M. Gau P.L.S. or R.C.E. No.: 26994

Title County Surveyor
 County Surveyor's Comment _____

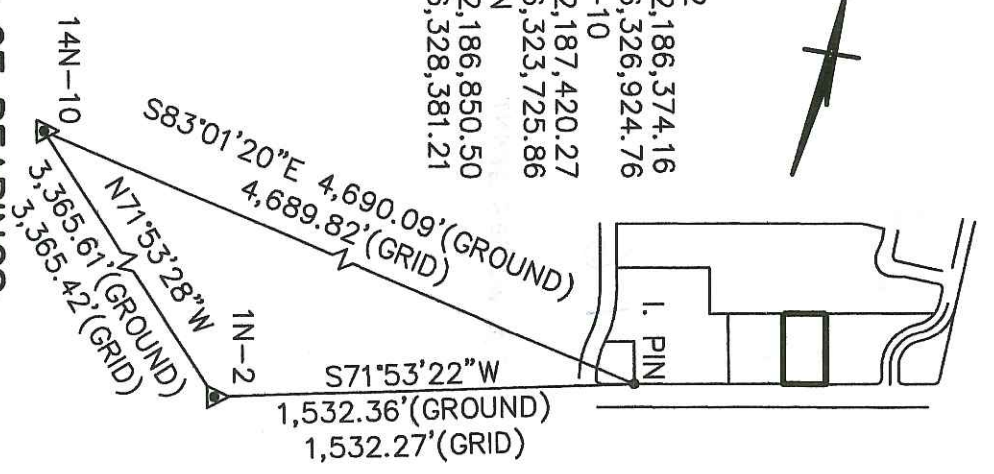




- REFERENCES:**
- (A) P.M. 1-53
 - (B) P.M. 1-83
- LEGEND:**
- L.S. LICENSED SURVEYOR
 - I. PIN IRON PIN
 - FD. FOUND
 - P.M. PARCEL MAP
 - SFN SEARCHED FOUND NOTHING
 - FD. 3/4" I. PIN
 - SET 3/4" I. PIN CAPPED L.S. 7600
 - + SET CHISELED CROSS TAGGED L.S. 7600 ON 3' OFFSETS



- 1N-2
- N = 2,186,374.16
- E = 6,326,924.76
- 14N-10
- N = 2,187,420.27
- E = 6,323,725.86
- I. PIN
- N = 2,186,850.50
- E = 6,328,381.21



BASIS OF BEARINGS:
 BEARINGS, DISTANCES, AND COORDINATES ARE BASED ON THE CALIFORNIA COORDINATE SYSTEM 83, ZONE 3 (1991.35), A LINE BETWEEN CITY OF STOCKTON MONUMENTS NO. 1N-2 AND NO. 14N-10 WHICH BEARS N71°53'30"W AS CALCULATED FROM COORDINATES SHOWN ON CITY OF STOCKTON TRAVERSE CONTROL MONUMENT SURVEY, FILED FOR RECORD IN BOOK 35 OF SURVEYS, AT PAGE 5, SAN JOAQUIN COUNTY RECORDS. ALL DISTANCES ARE GROUND DISTANCES AND MUST BE MULTIPLIED BY 0.99994269 TO OBTAIN GRID DISTANCES

DESCRIPTION:
 THIS DOCUMENT IS FOR THE PURPOSE OF SETTING THE CORNERS OF PARCEL 5 AS SHOWN ON PARCEL MAP BOOK 1, PAGE 53, SAN JOAQUIN COUNTY RECORDS.