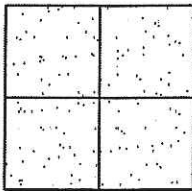


CORNER RECORD

Document Number CR-14-55
County of San Joaquin, California

City of _____

Brief Legal Description "B" STREET @ CLOVER LANE
(WITHIN SECTION 34, C.M. WEBER GRANT)



CORNER TYPE

- Government Corner Control
- Meander Property
- Rancho Other

Date of Survey FEBRUARY 12, 2014

COORDINATES (Optional)

N. _____
 E. _____
 Zone _____ NAD27 NAD83
 NAD83 Epoch _____
 Elev. _____
 Vert. Datum: NGVD29 NAVD88
 Meas. Units: Metric Imperial

Corner - Left as found Found and tagged Established Reestablished Rebuilt

Identification and type of corner found: Evidence used to identify or procedure used to establish or reestablish the corner:
SEE SKETCH ON BACKSIDE.

A description of the physical condition of the monument as found and as set or reset:
SEE SKETCH ON BACKSIDE.

SURVEYOR'S STATEMENT

This Corner Record was prepared by me or under my direction in conformance with the Land Surveyors' Act on February 26, 2014.

Signed James E. Hart P.L.S. Number 8657

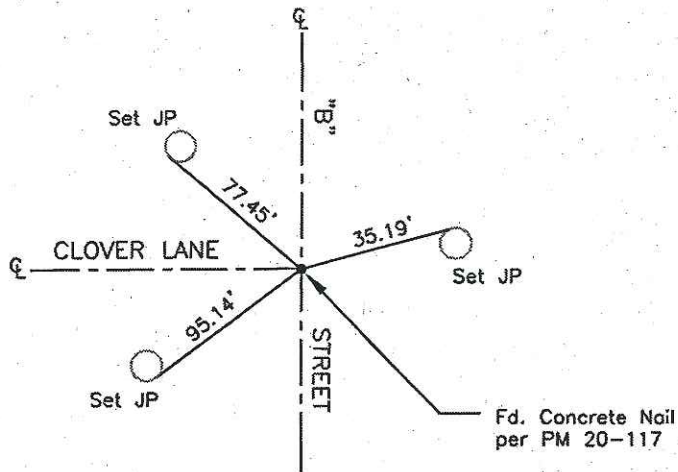
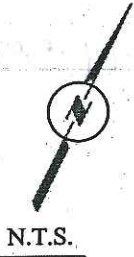
COUNTY SURVEYOR'S STATEMENT

This Corner Record was received February 26, 2014 and examined and filed March 12, 2014.

Signed Thomas M. Gau R.C.E. No. 26994
Title County Surveyor

County Surveyor's Comment _____





Note: Found Monuments are not tagged unless otherwise noted.

"No Attempt Was Made to Verify the Monument(s)"

Set=Conc. Nail with Brass Washer Stamped

"S.J. Co.", unless otherwise noted

Fd.=Found Conc. Nail with Brass Washer Stamped

"S.J. Co.", unless otherwise noted

CR=Corner Record

FP=Fence Post

JP=Joint Pole

LP=Light Pole

PP=Power Pole

GP=Guy Pole

SP=Service Pole

TP=Telephone Pole

S.F.N.=Searched Found Nothing

N.T.S.=Not To Scale

M&P=Maps & Plats

PM=Parcel Map

RS=Record of Survey

FB=Field Book