

CORNER RECORD

Document Number CR-14-18

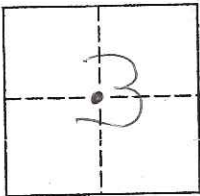
City of _____

County of SAN JOAQUIN, California

Brief Legal Description CENTER 1/4 CORNER OF SECTION 3 OF T3N, RTE OF MDB & M

CORNER TYPE

COORDINATES(Optional)



T3N RTE

Government Corner Control
Meander Property
Rancho Other

N. _____
E. _____
Zone _____ NAD27 NAD83
NAD83 Epoch _____
Elevation _____
Vert. Datum: NGVD29 NAV88
Meas. Units: Metric Imperial

Date of Survey JULY 25, 2013

Corner - Left as found Found and tagged Established Reestablished Rebuilt

Identification and type of corner found: Evidence used to identify or procedure used to establish or reestablish the corner:

FOUND 3/4" DIA. IRON ROD WITH NO TAG DOWN 0.4' BELOW AC SURFACE.
FOUND ONE OF THE REFERENCE POINTS FROM THE PREVIOUS CORNER
RECORD (06-11).

A description of the physical condition of the monument as found and as set or reset:

MONUMENT WAS FOUND IN GOOD CONDITION. SET TWO NEW
REFERENCE POINTS AND MEASURED DISTANCES TO MONUMENT.
VERIFIED DISTANCE FROM EXISTING REFERENCE POINT TO MONUMENT.

SURVEYOR'S STATEMENT

This Corner Record was prepared by me or under my direction in conformance with the Land Surveyor's Act on JANUARY 16, 2014.

Signed [Signature] P.L.S. or R.C.E. Number 8022
For the State of California
Department of Transportation



COUNTY SURVEYOR'S STATEMENT

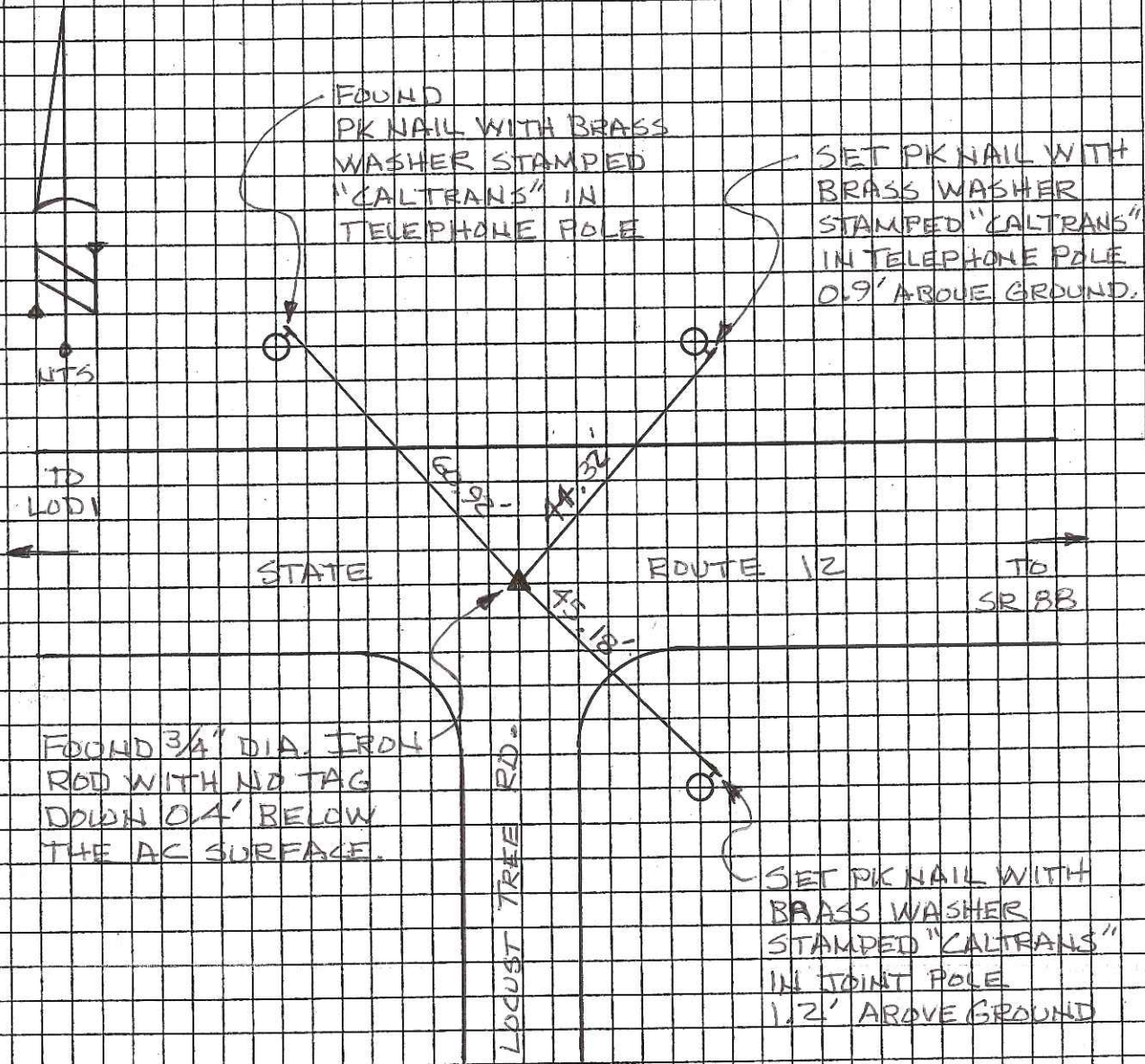
This Corner Record was received January 22, 2014 and examined and filed February 14, 2014.

Signed Thomas M. Gau P.L.S. or R.C.E. Number 26994

Title County Surveyor

County Surveyor's Comment _____





THE TIES SHOWN HEREON ARE FOR THE PURPOSE OF PERPETUATING THE MONUMENTATION CURRENTLY EXISTING. NO ATTEMPT WAS MADE TO DETERMINE THE VALIDITY OF THE MONUMENT OR ITS PROPER LOCATION IN RELATION TO LEGAL BOUNDARY LINES IN THE AREA.