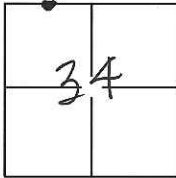


CORNER RECORD

Document Number CR-13-385
City of Manteca County of San Joaquin, California

Brief Legal Description Northwest quarter of Section 34 per Book 27 of Maps & Plats, Page 38, S.J.C.R.



TIS, RTE, MDM

CORNER TYPE

Government Corner ☐ Control ☐
Meander ☐ Property ☐
Rancho ☐ Other ☒

Date of Survey November 7, 2013

COORDINATES(Optional)

N. _____
E. _____
Zone _____ NAD27 ☐ NAD83 ☐
NAD83 Epoch _____
Elev. _____
Vert. Datum: NGVD29 ☐ NADV88 ☐
Meas. Units: Metric ☐ Imperial ☒

Corner - Left as found ☒ Found and tagged ☐ Established ☐ Reestablished ☐ Rebuilt ☐

Identification and type of corner found: Evidence used to identify or procedure used to establish or reestablish the corner:
SEE SKETCH ON PAGE 2

A description of the physical condition of the monument as found and as set or reset:
SEE SKETCH ON PAGE 2

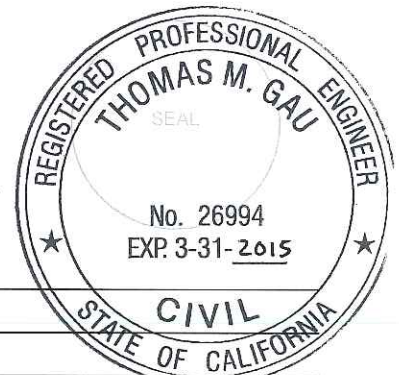
SURVEYOR'S STATEMENT

This Corner Record was prepared by me or under my direction in conformance with
the Land Surveyor's Act on Nov. 20th, 2013.
Signed Douglas F. Banks P.L.S. or R.C.E. No.: 8159



COUNTY SURVEYOR'S STATEMENT

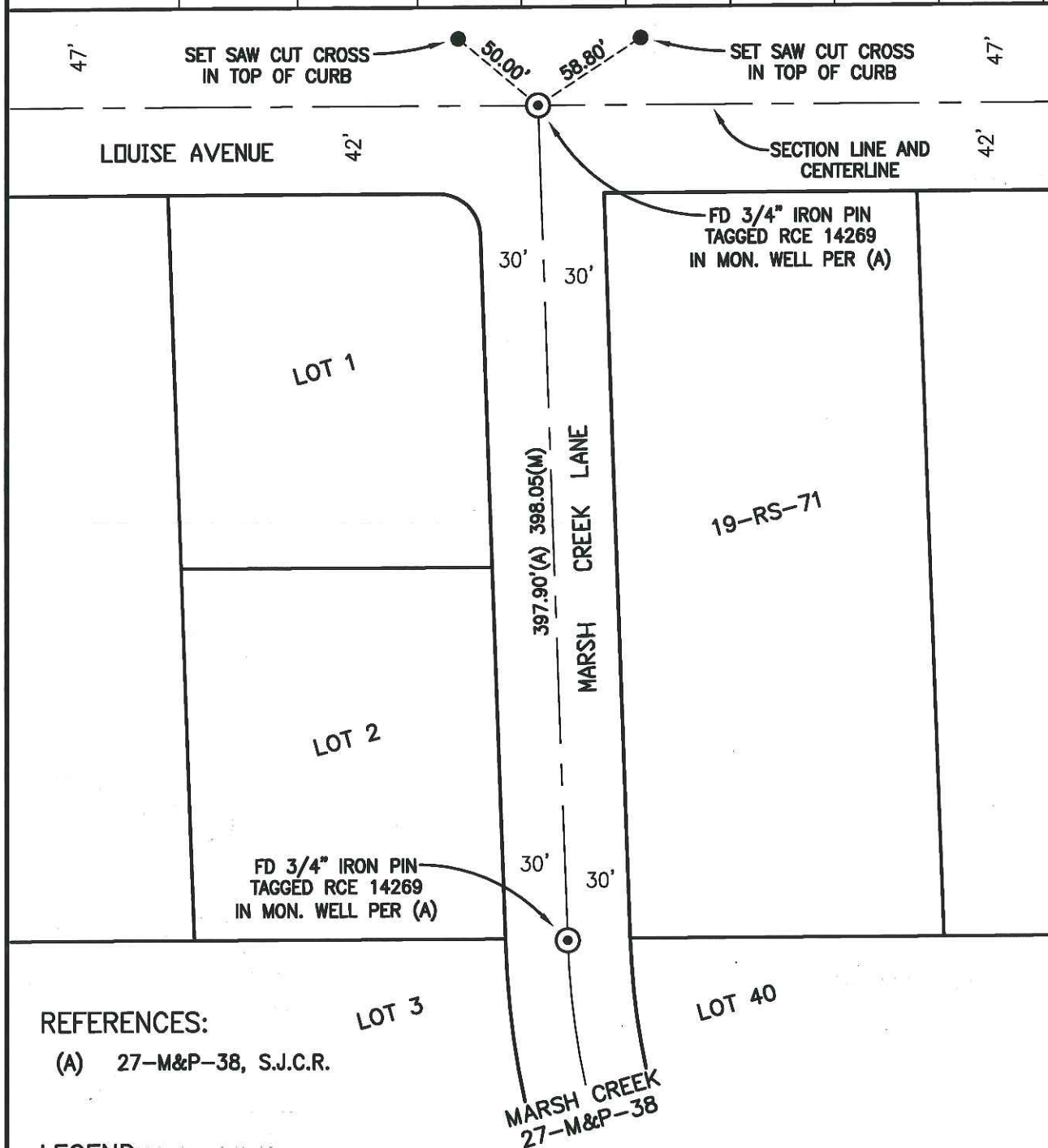
This Corner Record was received November 22, 2013 and examined
and filed December 29, 2013.
Signed Thomas M. Gau P.L.S. or R.C.E. No.: 26994
Title County Surveyor
County Surveyor's Comment _____



ALMOND CREST ESTATES
UNIT NO. 2
35-M&P-2



NOT TO SCALE



REFERENCES:

(A) 27-M&P-38, S.J.C.R.

LEGEND:

FD FOUND
(M) MEASURED DISTANCE
-RS- RECORD OF SURVEY, BOOK, PAGE, S.J.C.R.
-M&P- MAPS & PLATS, BOOK, PAGE, S.J.C.R.
S.J.C.R. SAN JOAQUIN COUNTY RECORDS

LEGEND:

⊙ FD MONUMENT IN WELL AS NOTED
● SET MONUMENT AS NOTED