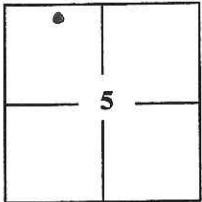


CORNER RECORDDocument Number CR-13-384
County of San Joaquin, California

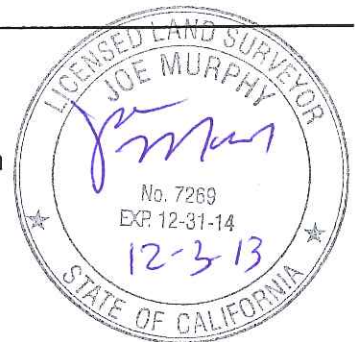
City of _____

Brief Legal Description PARCEL "A" (P.M. 12-197), BEING A PORTION OF THE NORTHWEST QUARTER OF SECTION 5, TOWNSHIP 3 NORTH, RANGE 6 EAST, MOUNT DIABLO BASE AND MERIDIAN.**CORNER TYPE****COORDINATES (Optional)**

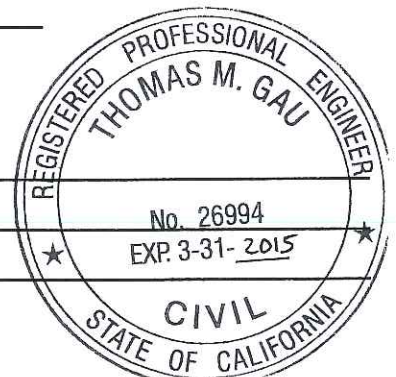
T3N, R6E, MDM

Government Corner ☐ Control ☐
Meander ☐ Property ☒
Rancho ☐ Other ☐Date of Survey 11/5/13N. _____
E. _____
Zone _____ NAD27 ☐ NAD83 ☐
NAD83 Epoch _____
Elev. _____
Vert. Datum: NGVD29 ☐ NAVD88 ☐
Meas. Units: Metric ☐ Imperial ☒Corner - Left as found ☐ Found and tagged ☐ Established ☐ Reestablished ☒ Rebuilt ☐

Identification and type of corner found: Evidence used to identify or procedure used to establish or reestablish the corner:

Re-established northeast corner of Parcel "A" per record information on Parcel Map 12-197A description of the physical condition of the monument as found and as set or reset: A 3/4" iron rod capped "LS 7269" was re-set at the northeast corner of said Parcel "A".**SURVEYOR'S STATEMENT**This Corner Record was prepared by me or under my direction in conformance with the Land Surveyors' Act on December 3, 2013.Signed Joe Murphy L.S. No. 7269**COUNTY SURVEYOR'S STATEMENT**This Corner Record was received December 4, 2013 and examined and filed December 29, 2013.Signed Thomas M. Gau R.C.E. No. 26994Title County Surveyor

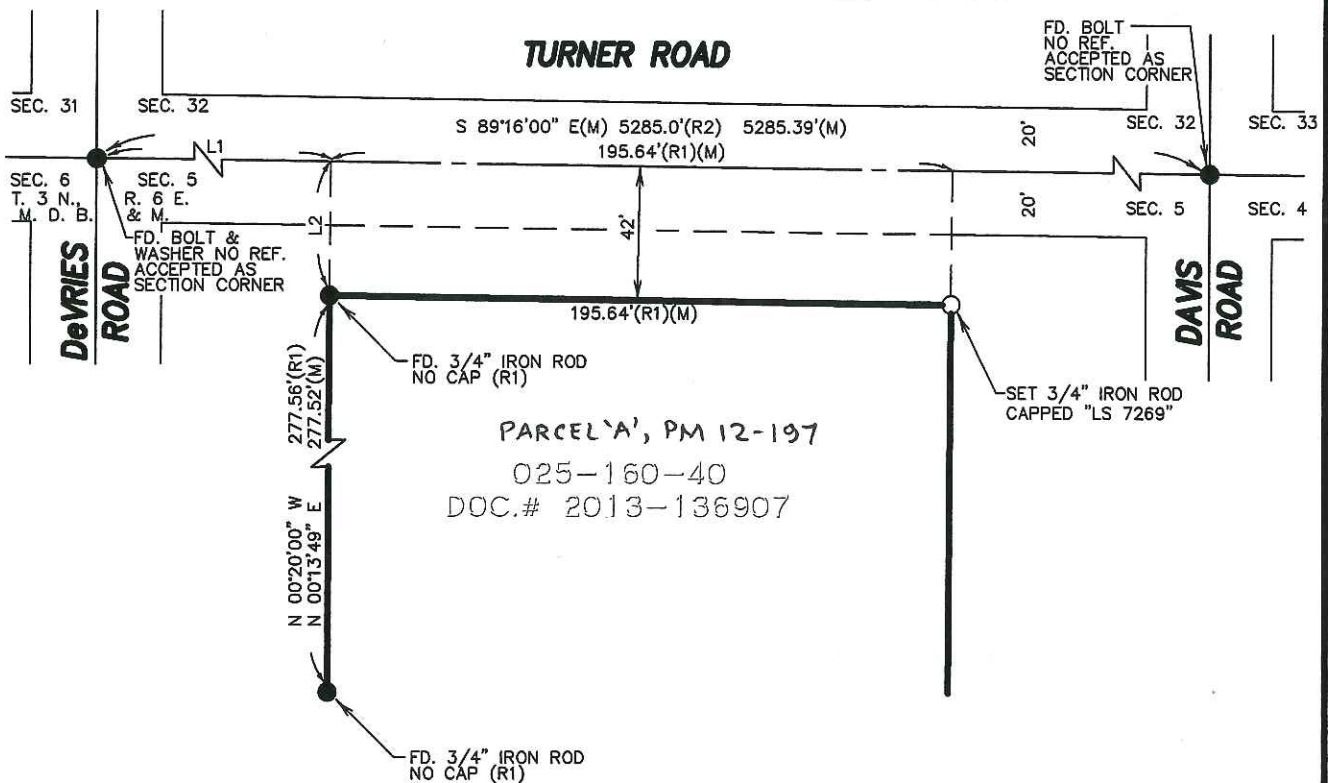
County Surveyor's Comment _____



SCALE: $1" = 60'$

LEGEND

FD. (M) FOUND MEASURED
(R1) P.M. 12-197
(R2) R.S. 3-34



LINE TABLE

LINE	BEARING	DISTANCE
L1	S 89°16'00" E (R1)(M)	801.90'(R1) 801.87'(M)
L2	N 00°20'00" W (R1) N 00°13'49" E (M)	42.00'(R1)(M)