

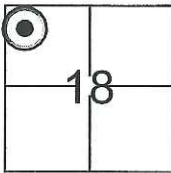
# CORNER RECORD

Document Number CR-13-286

City of STOCKTON

County of SAN JOAQUIN, California

Brief Legal Description POINT NO'S. 10012 AND 55001 OF R.O.S. 36-166, S.J.C.R.



S 18, WEBER GRANT

## CORNER TYPE

Government Corner ☐ Control ☐  
Meander ☐ Property ☐  
Rancho ☐ Other ☒

Date of Survey JULY 31, 2013

## COORDINATES(Optional)

N. \_\_\_\_\_  
E. \_\_\_\_\_  
Zone \_\_\_\_\_ NAD27 ☐ NAD83 ☐  
NAD83 Epoch \_\_\_\_\_  
Elev. \_\_\_\_\_  
Vert. Datum: NGVD29 ☐ NADV88 ☐  
Meas. Units: Metric ☐ Imperial ☒

Corner - Left as found ☐ Found and tagged ☐ Established ☐ Reestablished ☒ Rebuilt ☐

Identification and type of corner found: Evidence used to identify or procedure used to establish or reestablish the corner:

RE-ESTABLISHED "POINT NO. 10012 AND PT. NO. 55001" AS PER COORDINATE VALUES

PROVIDED FOR SAID POINTS AS SHOWN ON THAT R.O.S. FILED FEBRUARY 26, 2008,

IN BOOK 36, AT PAGE 166, SAN JOAQUIN COUNTY RECORDER.

THE RE-ESTABLISHED MONUMENTS DO NOT DEFINE A BOUNDARY LINE

OR RIGHT OF WAY LOCATION AS DESCRIBED IN R.O.S. 36-166.

A description of the physical condition of the monument as found and as set or reset: \_\_\_\_\_

SET 1" COPPER PLUG, STAMPED "LS 8247".

## SURVEYOR'S STATEMENT

This Corner Record was prepared by me or under my direction in conformance with

the Land Surveyor's Act on AUGUST 21, 2013.

Signed [Signature] P.L.S. or R.C.E. No.: 8247



## COUNTY SURVEYOR'S STATEMENT

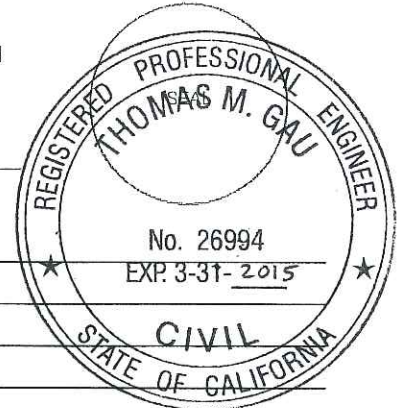
This Corner Record was received August 21, 2013 and examined

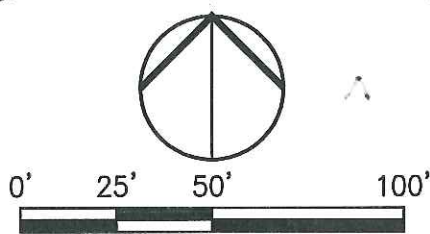
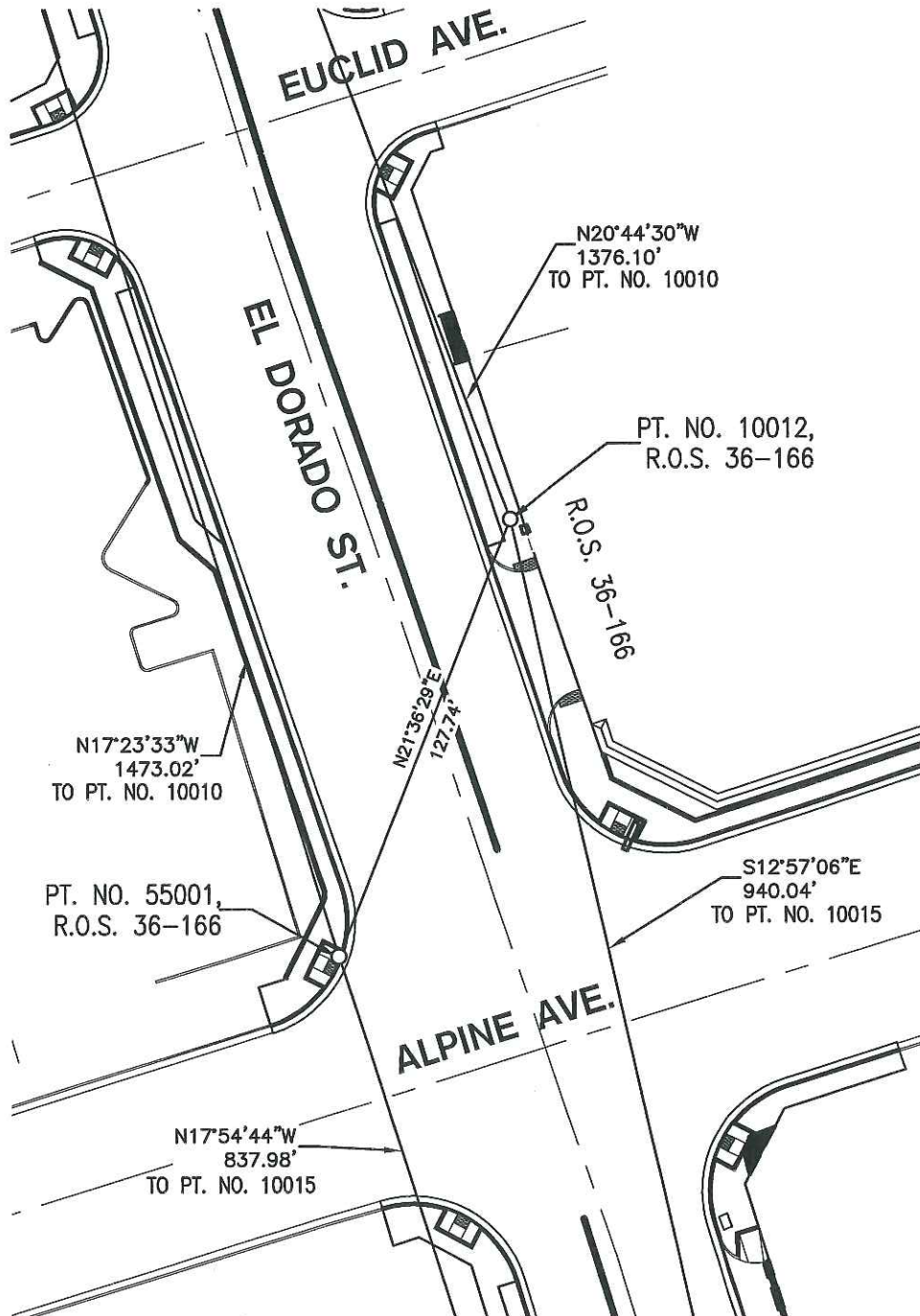
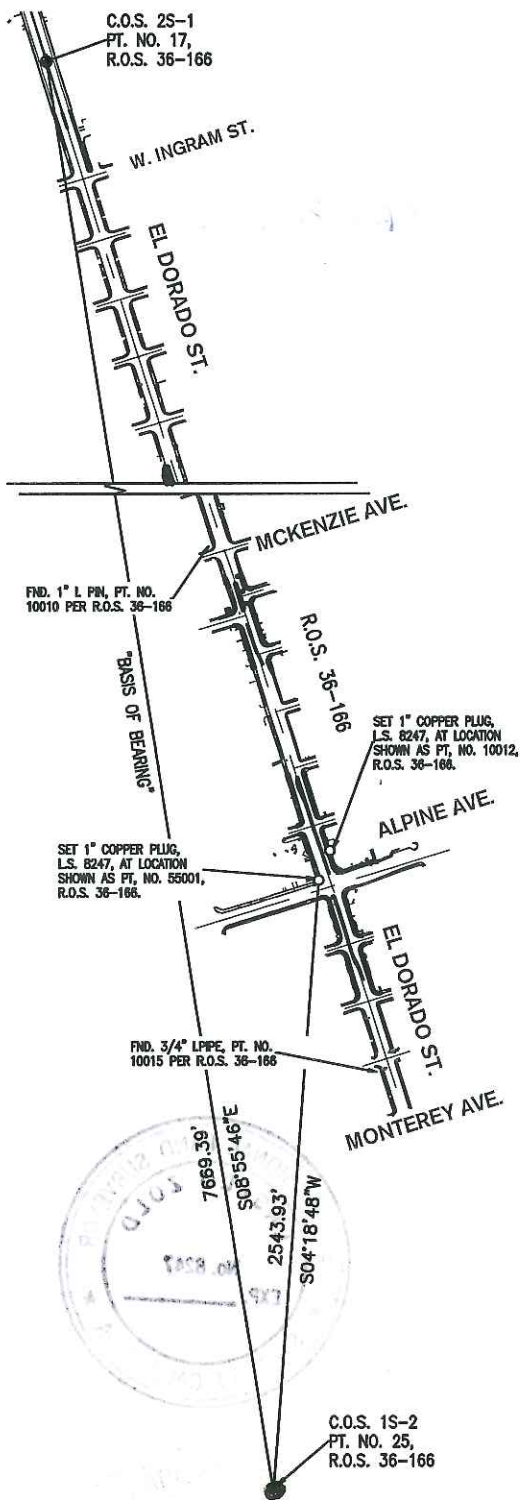
and filed September 10, 2013.

Signed Thomas M. Gau P.L.S. or R.C.E. No.: 26994

Title County Surveyor

County Surveyor's Comment \_\_\_\_\_





### LEGEND:

- R.O.S. RECORD OF SURVEY, BOOK -PAGE
- SET 1" COPPER PLUGS, L.S. 8247, PER PT. NO'S. 10012 AND 55001 LOCATIONS, AS SHOWN ON R.O.S. 36-166
- FOUND MONUMENTS AS SHOWN PER R.O.S. 36-166

### NOTE:

GRID DISTANCES SHOWN HEREON MUST BE MULTIPLIED BY 1.00005863 TO OBTAIN GROUND DISTANCES

### BASIS OF BEARINGS:

A LINE BETWEEN C.O.S. CONTROL POINTS 2S-1 AND 1S-2, WHICH BEARS N08°55'46"W, SAID LINE BEING CALCULATED FROM THE C.O.S. HORIZONTAL CONTROL SURVEY, PHASE 14, FILED IN BOOK 35 OF SURVEYS, AT PAGE 5, SAN JOAQUIN COUNTY RECORDS. SAID SURVEY BASED ON CCS83, ZONE 3.