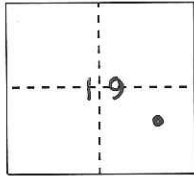


CORNER RECORD

Document Number

CR-13-269City of (APN 065-030-09)County of San Joaquin, CaliforniaBrief Legal Description Found EMBUD monument in aqueduct R/W, near 14651 Grassland Road.

S 19, T 3 N, R 8 E, MDM

CORNER TYPEGovernment Corner ☐
Meander ☐
Rancho ☐Control ☒
Property ☐
Other ☐**COORDINATES (Optional)**

N. _____

E. _____

Zone _____

NAD83 Epoch _____

Elev. _____

Vert. Datum: NGVD29 ☐NAVD88 ☐Meas. Units: Metric ☐Imperial ☒Date of Survey March 8, 2010Corner - Left as found ☐ Found and tagged ☐ Established ☐ Reestablished ☒ Rebuilt ☐

Identification and type of corner found: Evidence used to identify or procedure used to establish or reestablish the corner:
An existing East Bay Municipal Utility District (EBMUD) brass disc monument, as noted on Page 2, was found on top of a concrete manway structure marking the centerline of the existing aqueduct and control for the corridor R/W.

A description of the physical condition of the monument as found and as set or reset:

The found monument was referenced with 4 RPs representing two intersecting lines then replaced with a new brass disc as described on Page 2.

Reference EBMUD Field Book 4411, Page 18 (Poulsen/Chou)

SURVEYOR'S STATEMENT

This Corner Record was prepared by me or under my direction in conformance with the Professional Land Surveyor's Act on July 3, 2013

Signed R. Lee Hixson P.L.S or R.C.E. No. 4806**COUNTY SURVEYOR'S STATEMENT**This Corner Record was received July 17, 2013and examined and filed August 22, 2013Signed Thomas M. Gau P.L.S or R.C.E. No. 26994Title County Surveyor

County Surveyor's Comment: _____



SAN JOAQUIN CO.

LODI

SE 1/4 OF SECTION 19
T. 3 N., R. 8 E.
M. D. M.

14601 GRASSLAND ROAD
APN 065-030-08

TO CADLE ROAD

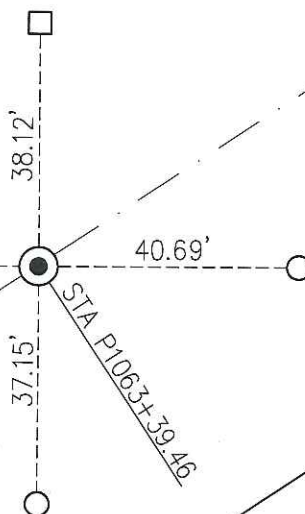
CENTERLINE OF AQUEDUCT #1

APN 065-010-02

14651 GRASSLAND ROAD
APN 065-030-09

TO TULLY ROAD

100' MOKELUMNE AQUEDUCT
RIGHT OF WAY



SE 1/4 OF SECTION 19
T. 3 N., R. 8 E.
M. D. M.

LEGEND

- FOUND 2-1/2" BRASS DISC IN CONCRETE MANWAY PER EBMUD R/W MAP 4195-G-136; REPLACED WITH 3-1/2" DIAMETER BRASS PLATE, STAMPED "RESET 2010, PL1113+29.45, P1063+39.46 E.B.M.U.D.", ELEVATION NOT TRANSFERED.
- SET 1/2" REBAR AND YELLOW PLASTIC CAP, "EBMUD RP"
- SET 2x2 HUB WITH TAG "EBMUD SURV"



SCALE
1"=30'



ADDRESS: 14651 GRASSLAND ROAD
APN: 065-030-09

CR#

CR