

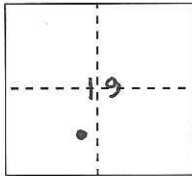
CORNER RECORD

Document Number

City of (APN 065-250-01)

County of San Joaquin, California

Brief Legal Description Found EMBUD monument in aqueduct R/W, near 12414 Cadle Road.



CORNER TYPE

Government Corner	<input type="checkbox"/>	Control	<input checked="" type="checkbox"/>
Meander	<input type="checkbox"/>	Property	<input type="checkbox"/>
Rancho	<input type="checkbox"/>	Other	<input type="checkbox"/>

COORDINATES (Optional)

N. _____
E. _____
Zone _____ NAD27 ☐ NAD83 ☐
NAD83 Epoch _____
Elev. _____
Vert. Datum: NGVD29 ☐ NAVD88 ☐
Meas. Units: Metric ☐ Imperial ☒

S19, T3N, R8E, MDM

Date of Survey September 14, 2009

Corner - Left as found ☐ Found and tagged ☐ Established ☐ Reestablished ☒ Rebuilt ☐

Identification and type of corner found: Evidence used to identify or procedure used to establish or reestablish the corner:
An existing East Bay Municipal Utility District (EBMUD) brass disc monument, as noted on Page 2, was found on top of a concrete manway structure marking the centerline of the existing aqueduct and control for the corridor R/W.

A description of the physical condition of the monument as found and as set or reset:

The found monument was referenced with 4 RPs representing two intersecting lines then replaced with a new brass disc as described on Page 2.

Reference EBMUD Field Book 4411, Page 17 (Poulsen/Chou)

SURVEYOR'S STATEMENT

This Corner Record was prepared by me or under my direction in conformance with the Professional Land Surveyor's Act on July 3 2013

Signed R. Lee Hixson P.L.S or R.C.E. No. 4806



COUNTY SURVEYOR'S STATEMENT

This Corner Record was received July 17, 2013

and examined and filed August 22, 2013

Signed Kumar M. Han P.L.S or R.C.E. No. 26994

Title County Surveyor

County Surveyor's Comment:



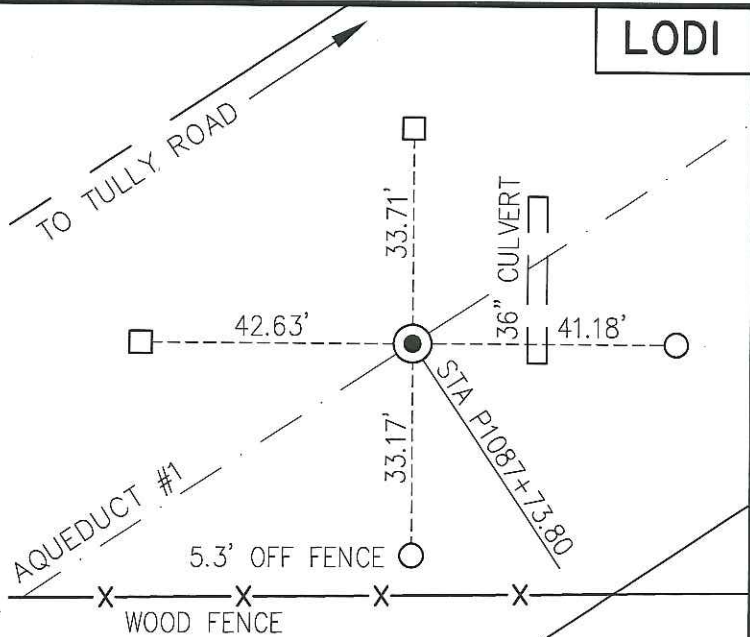
SAN JOAQUIN CO.

LODI

TOKAY COLONY
BLACK A
LOT 3

12414 CADLE ROAD
APN 065-250-01

APN 065-010-02



15 RS 197

TOKAY COLONY
BLACK A
LOT 2

14011 GRASSLAND ROAD
APN 065-250-08

SECTION 19
T 3 N, R 8 E
M. D. M.

LEGEND

- FOUND 2-1/2" BRASS DISC IN CONCRETE MANWAY PER EBMUD R/W MAP 4195-G-136; REPLACED WITH 3-1/2" DIAMETER BRASS PLATE, STAMPED "RESET 2010, PL1137+63.29, P1087+73.80 E.B.M.U.D."
- SET 1/2" REBAR AND YELLOW PLASTIC CAP, "EBMUD RP"
- SET 2x2 HUB WITH TAG "EBMUD SURV"



SCALE
1"=30'



ADDRESS: 12414 CADLE ROAD
APN: 065-250-01

CR#

CR