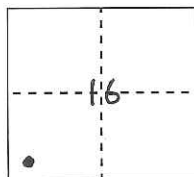


CORNER RECORD

Document Number CR-13-259City of Stockton (APN 102-010-02)County of San Joaquin, CaliforniaBrief Legal Description Found EMBUD monument in aqueduct R/W, near El Dorado St. and March Ln.SECTION 16,
WEBER GRANT

CORNER TYPE

Government Corner	<input type="checkbox"/>	Control	<input checked="" type="checkbox"/>
Meander	<input type="checkbox"/>	Property	<input type="checkbox"/>
Rancho	<input type="checkbox"/>	Other	<input type="checkbox"/>

Date of Survey February 25, 2013

COORDINATES (Optional)

N. _____
E. _____
Zone _____ NAD27 ☐ NAD83 ☐
NAD83 Epoch _____
Elev. _____
Vert. Datum: NGVD29 ☐ NAVD88 ☐
Meas. Units: Metric ☐ Imperial ☒

Corner - Left as found ☐ Found and tagged ☐ Established ☐ Reestablished ☒ Rebuilt ☐

Identification and type of corner found: Evidence used to identify or procedure used to establish or reestablish the corner:

An existing East Bay Municipal Utility District (EBMUD) brass disc monument, as noted on page 2, was found on top of a concrete manway structure marking the centerline of the existing aqueduct and control for the corridor R/W.

A description of the physical condition of the monument as found and as set or reset:

The found monument was referenced with 4 RPs representing two intersecting lines then replaced with a new brass disc as described on page 2.

Reference EBMUD Field Book 4449, Page 59 (Poulsen/ Clarke)

SURVEYOR'S STATEMENT

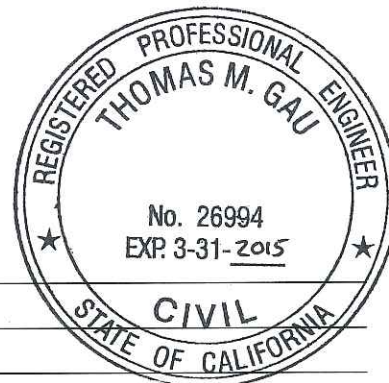
This Corner Record was prepared by me or under my direction in conformance with the Professional Land Surveyor's Act on July 3, 2013

Signed R. Lee Hixson P.L.S. or R.C.E. No. 4806

COUNTY SURVEYOR'S STATEMENT

This Corner Record was received July 17, 2013and examined and filed August 22, 2013Signed Thomas M. Gau P.L.S. or R.C.E. No. 26994Title County Surveyor

County Surveyor's Comment: _____



STOCKTON

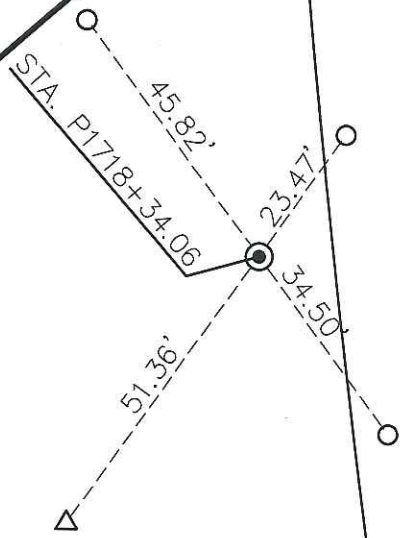
SAN JOAQUIN CO.

MARCH LN.

MOKELUMNE AQUEDUCT
EBMUD R/W
APN 102-010-02

APN 104-010-02

EL DORADO ST.



100'

MOKELUMNE AQUEDUCT
EBMUD R/W
APN 102-010-02

LEGEND

- FOUND 2½" BRASS DISK ON CONCRETE MANWAY STRUCTURE ON C/L AQUEDUCT #1; REPLACED WITH 3½" BRASS DISC STAMPED "EBMUD P1718+34.06, H1718+06.24, EBMUD SURVEY, RESET 2013" OLD ELEV=15.20' NEW ELEV=16.75 (AQU. DATUM)
- SET CONCRETE ANCHOR NAIL AND 1½" BRASS WASHER STAMPED "EBMUD RP" IN TOP OF CONCRETE CURB
- △ SET ½" RE-BAR WITH YELLOW PLASTIC CAP STAMPED "EBMUD RP"

