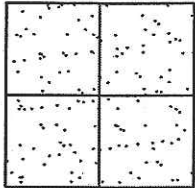


CORNER RECORD

Document Number CR-13-246
County of San Joaquin, California

City of _____

Brief Legal Description BEAR CREEK ROAD 3848' ± EAST OF NORTH HIGHWAY 99 FRONTAGE ROAD
WITHIN SECTION 30, TOWNSHIP 3 NORTH, RANGE 7 EAST, MOUNT DIABLO BASE & MERIDIAN



CORNER TYPE

Government Corner ☐ Control ☐
Meander ☐ Property ☐
Rancho ☐ Other ☒
Date of Survey July 1, 2013

COORDINATES (Optional)

N. _____
E. _____
Zone _____ NAD27 ☐ NAD83 ☐
NAD83 Epoch _____
Elev. _____
Vert. Datum: NGVD29 ☐ NAVD88 ☐
Meas. Units: Metric ☐ Imperial ☒

Corner - Left as found ☐ Found and tagged ☐ Established ☐ Reestablished ☒ Rebuilt ☐

Identification and type of corner found: Evidence used to identify or procedure used to establish or reestablish the corner:
SEE SKETCH ON BACKSIDE.

A description of the physical condition of the monument as found and as set or reset: _____
SEE SKETCH ON BACKSIDE.

SURVEYOR'S STATEMENT

This Corner Record was prepared by me or under my direction in conformance with
the Land Surveyors' Act on July 29, 2013.

Signed James E. Hart P.L.S. Number 8657

COUNTY SURVEYOR'S STATEMENT

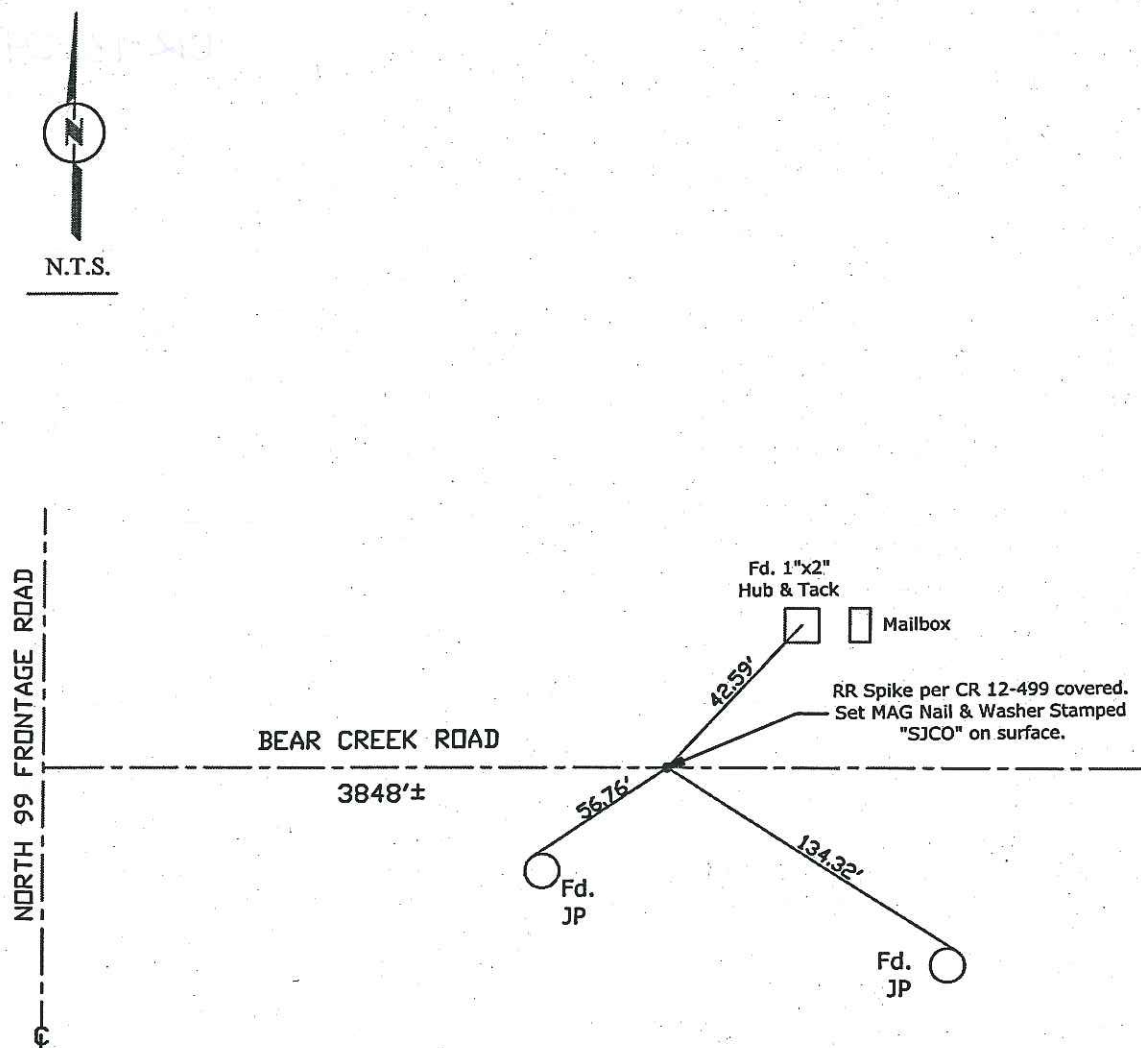
This Corner Record was received July 29, 2013 and examined
and filed August 2, 2013.

Signed Thomas M. Gau R.C.E. No. 26994

Title County Surveyor

County Surveyor's Comment _____





Note: Found Monuments are not tagged unless otherwise noted.

"No Attempt Was Made to Verify the Monument(s)"

Set=Conc. Nail with Brass Washer Stamped

"S.J. Co.", unless otherwise noted

Fd.=Found Conc. Nail with Brass Washer Stamped

"S.J. Co.", unless otherwise noted

CR=Corner Record

FP=Fence Post

JP=Joint Pole

LP=Light Pole

PP=Power Pole

GP=Guy Pole

SP=Service Pole

TP=Telephone Pole

S.F.N.=Searched Found Nothing

N.T.S.=Not To Scale

M&P=Maps & Plats

PM=Parcel Map

RS=Record of Survey

FB=Field Book