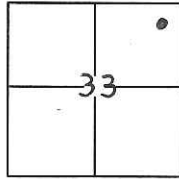


CORNER RECORD

Document Number CR-13-230
City of TRACY County of SAN JOAQUIN, California

Brief Legal Description Lot 17, Tract 1897, ALMONDWOOD PHASE VI, Vol. 27, Pg. 23, M & P, San Joaquin Co.



S33, T2S, R5E, MDM

CORNER TYPE

Government Corner ☐ Control ☐
Meander ☐ Property ☒
Rancho ☐ Other ☐

Date of Survey _____

COORDINATES(Optional)

N. _____
E. _____
Zone _____ NAD27 ☐ NAD83 ☐
NAD83 Epoch _____
Elev. _____
Vert. Datum: NGVD29 ☐ NADV88 ☐
Meas. Units: Metric ☐ Imperial ☒

Corner - Left as found ☐ Found and tagged ☐ Established ☐ Reestablished ☒ Rebuilt ☐

Identification and type of corner found: Evidence used to identify or procedure used to establish or reestablish the corner:

USED FOUND STANDARD STREET MONUMENTS PER TRACT 1897, ALMONDWOOD PHASE VI (Vol.27, Pg.23)
TO REESTABLISH THE LOCATION OF THE CORNERS OF LOT 17.

A description of the physical condition of the monument as found and as set or reset: SET 5/8" REBAR WITH ALUMINUM CAP
STAMPED "LAMB SURVEYING, INC., LS 6627", BELOW GROUND FOR LOT 17 FRONT CORNERS. SET NAIL
AND TAG, LS 6627, IN TOP RAIL OF FENCE AT THE REAR SOUTHEAST CORNER LOT 17 AND NAIL AND TAG,
LS 6627, IN HUB FOR REAR SOUTHWEST CORNER OF LOT 17, TRACT 1897, (VOL. 27, PG. 23), M. & P.

SURVEYOR'S STATEMENT

This Corner Record was prepared by me or under my direction in conformance with
the Land Surveyor's Act on SEPTEMBER 15, 2010.

Signed Darryl K. Lamb P.L.S. or R.C.E. No.: PLS 6627



COUNTY SURVEYOR'S STATEMENT

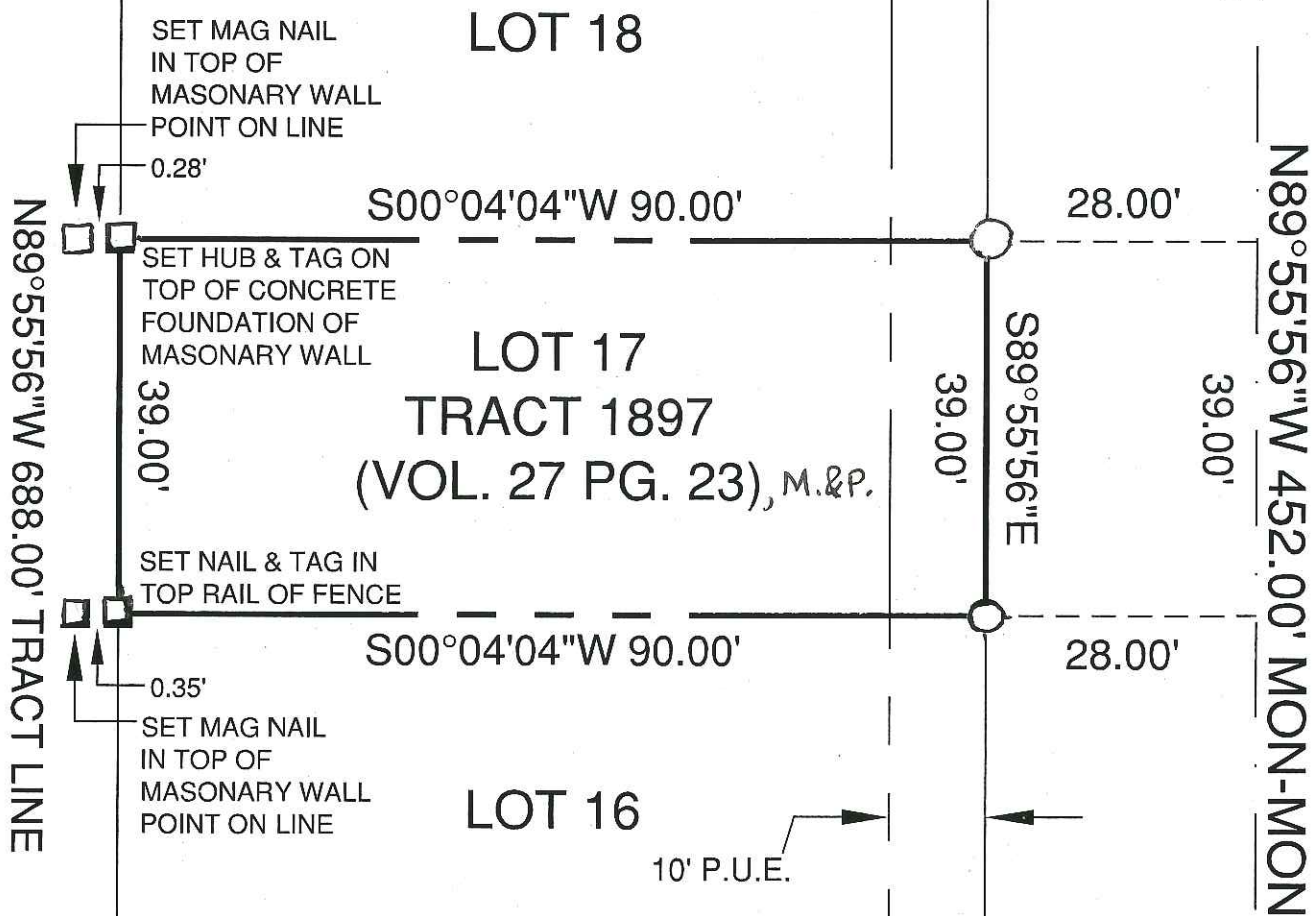
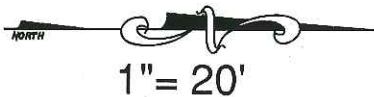
This Corner Record was received July 15, 2013 and examined
and filed August 2, 2013.

Signed Thomas M. Gau P.L.S. or R.C.E. No.: 26994

Title County Surveyor

County Surveyor's Comment _____





LEGEND

- = FOUND STANDARD MONUMENT
PER TRACT 1897, M. & P.
- ⊙ = SET REBAR & CAP, L.S. 6627
- = SET AS NOTED
- P.U.E. = PUBLIC UTILITIES EASEMENT