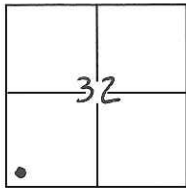


CORNER RECORD

Document Number CR-13-208

City of _____

County of San Joaquin, CaliforniaBrief Legal Description San Francisco Water District Monument B2280+99.81

T3S, R6E, MDM

CORNER TYPE

Government Corner	<input type="checkbox"/>	Control	<input type="checkbox"/>
Meander	<input type="checkbox"/>	Property	<input type="checkbox"/>
Rancho	<input type="checkbox"/>	Other	<input checked="" type="checkbox"/>

Date of Survey May 20, 2013**COORDINATES(Optional)**

N. _____
E. _____
Zone _____ NAD27 ☐ NAD83 ☐
NAD83 Epoch _____
Elev. _____
Vert. Datum: NGVD29 ☐ NADV88 ☐
Meas. Units: Metric ☐ Imperial ☒

Corner - Left as found ☐ Found and tagged ☐ Established ☐ Reestablished ☒ Rebuilt ☐

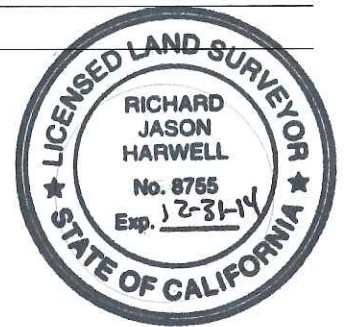
Identification and type of corner found: Evidence used to identify or procedure used to establish or reestablish the corner:

"B" Line monument B2280+99.81, a 3.5" brass disk set in concrete, referenced in the index entitled"Hetch Hetchy Water & Power, Moccasin to Tesla Portal R.O.W. Survey, Final Coordinate List".Monument verified and witness corners established prior to construction.For survey report, contact Survey Dept., 1 Lakeshore Dr., Moccasin, CA 95347.Reset San Francisco Water District Monument from witness corners after construction.

A description of the physical condition of the monument as found and as set or reset: _____

Set a 2' X 6" concrete cylinder 2' below grade with a 3.5" aluminum cap stamped"City and County of San Francisco H.H.W.S. STA. B228099.81 L.S. 8755 EL. 222.25"**SURVEYOR'S STATEMENT**

This Corner Record was prepared by me or under my direction in conformance with
the Land Surveyor's Act on May 20, 2013.

Signed [Signature] P.L.S. or R.C.E. No.: 8755**COUNTY SURVEYOR'S STATEMENT**This Corner Record was received June 4, 2013 and examinedand filed June 24, 2013.Signed Thomas M. Gau P.L.S. or R.C.E. No.: 26994Title County Surveyor

County Surveyor's Comment _____



SET 5/8" CAPPED REBAR
STAMPED "JACOBS CONTROL"

SET A 2' X 6" CONCRETE CYLINDER WITH A
3-1/2" ALUMINUM CAP STAMPED CITY AND COUNTY
OF SAN FRANCISCO H.H.W.S. STA.B228099.81,
L.S. 8755 EL. 222.25'

N60°37'06"E 335.42'

S17°15'24"E 94.21'

N18°19'36"W 175.24'

SET MAG NAIL IN PAVEMENT
OF BLEWETT ROAD

SET MAG NAIL IN PAVEMENT
OF BLEWETT ROAD

0 25' 50'



1" = 50'