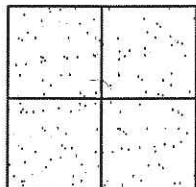


# CORNER RECORD

Document Number CR-13-187  
 County of San Joaquin, California

Brief Legal Description MACARTHUR DRIVE 127' +/- AND 268' +/- NORTH OF LINNE ROAD  
(ON SECTION 3 WEST LINE, TOWNSHIP 3 SOUTH, RANGE 5 EAST, MOUNT DIABLO BASE AND MERIDIAN)



## CORNER TYPE

Government Corner ☐ Control ☐  
 Meander ☐ Property ☐  
 Rancho ☐ Other ☒  
 Date of Survey May 02, 2013

## COORDINATES (Optional)

N. \_\_\_\_\_  
 E. \_\_\_\_\_  
 Zone \_\_\_\_\_ NAD27 ☐ NAD83 ☐  
 NAD83 Epoch \_\_\_\_\_  
 Elev. \_\_\_\_\_  
 Vert. Datum: NGVD29 ☐ NAVD88 ☐  
 Meas. Units: Metric ☐ Imperial ☒

Corner - Left as found ☒ Found and tagged ☐ Established ☐ Reestablished ☐ Rebuilt ☐

Identification and type of corner found: Evidence used to identify or procedure used to establish or reestablish the corner:  
SEE SKETCH ON BACKSIDE.

A description of the physical condition of the monument as found and as set or reset:  
SEE SKETCH ON BACKSIDE.

## SURVEYOR'S STATEMENT

This Corner Record was prepared by me or under my direction in conformance with  
 the Land Surveyors' Act on June 3, 2013.

Signed James E. Hart P.L.S. Number 8657

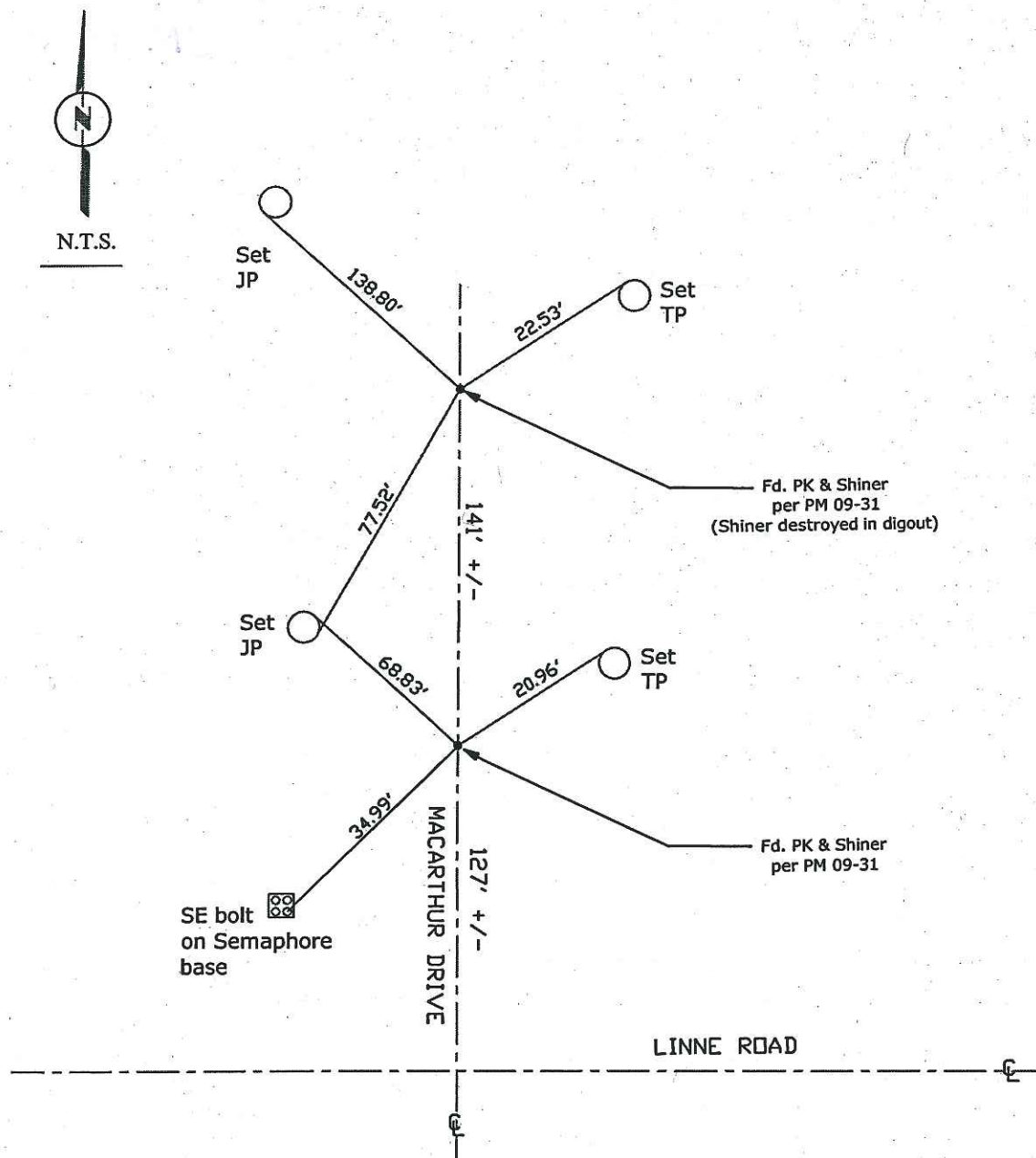
## COUNTY SURVEYOR'S STATEMENT

This Corner Record was received June 3, 2013 and examined  
 and filed June 18, 2013.

Signed Thomas M. Gau R.C.E. No. 26994  
 Title County Surveyor

County Surveyor's Comment \_\_\_\_\_





Note: Found Monuments are not tagged unless otherwise noted.

"No Attempt Was Made to Verify the Monument(s)"

Set=Conc. Nail with Brass Washer Stamped

"S.J. Co.", unless otherwise noted

Fd.=Found Conc. Nail with Brass Washer Stamped

"S.J. Co.", unless otherwise noted

CR=Corner Record

FP=Fence Post

JP=Joint Pole

LP=Light Pole

PP=Power Pole

GP=Guy Pole

SP=Service Pole

TP=Telephone Pole

S.F.N.=Searched Found Nothing

N.T.S.=Not To Scale

M&P=Maps & Plats

PM=Parcel Map

RS=Record of Survey

FB=Field Book