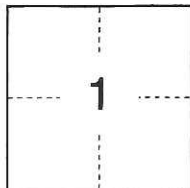
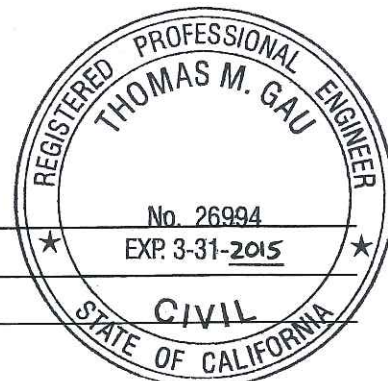
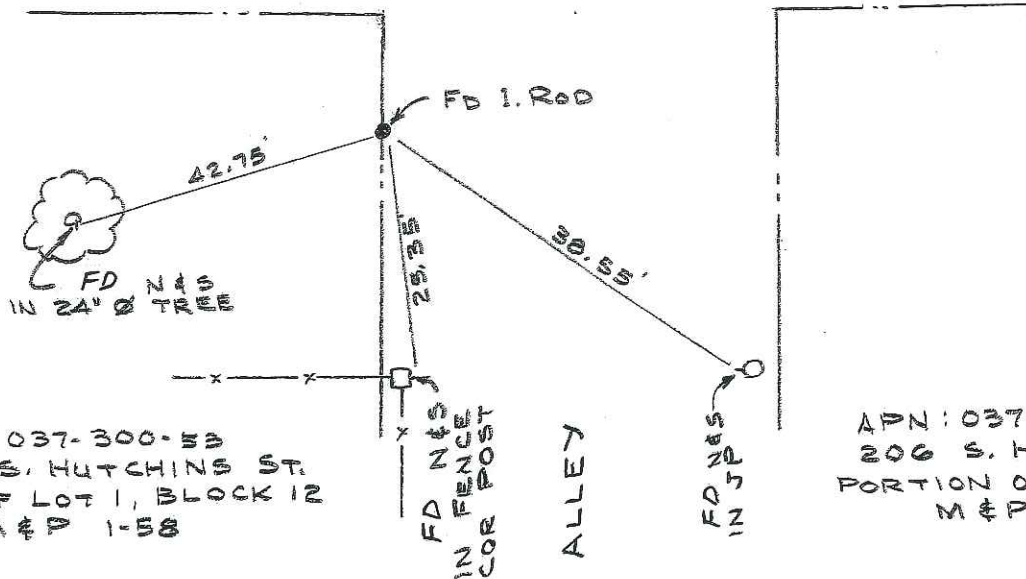


**CORNER RECORD**City of LodiDocument Number CR-13-149  
County of San Joaquin, CaliforniaBrief Legal Description Hutchins Street, being a portion of Lots 1 & 14, Block 11 of "MAP OF HUTCHIN'S ADDITION TO LODI", book of Maps & Plats, Volume 1, Page 58. Section 1, T.3N, R.6E, M.D.B.&M.**CORNER TYPE**Government Corner ☐ Control ☐  
Meander ☐ Property ☐  
Rancho ☐ Other ☒Date of Survey April 16, 2013**COORDINATES (Optional)**N. \_\_\_\_\_  
E. \_\_\_\_\_  
Zone \_\_\_\_\_ NAD27 ☐ NAD83 ☐  
NAD83 Epoch \_\_\_\_\_  
Elev. \_\_\_\_\_  
Vert. Datum: NGVD29 ☐ NAVD88 ☐  
Meas. Units: Metric ☐ Imperial ☒Corner - Left as found ☐ Found and tagged ☐ Established ☐ Reestablished ☒ Rebuilt ☐Identification and type of corner found: Evidence used to identify or procedure used to establish or reestablish the corner:  
It is the purpose of this corner record to reestablish monuments shown on Corner Record 13-53.A description of the physical condition of the monument as found and as set or reset:  
Monuments reset with 1.25" diameter brass disk stamped "LS 7889" in concrete sidewalk.**SURVEYOR'S STATEMENT**This Corner Record was prepared by me or under my direction in conformance with  
the Land Surveyors' Act on May 3, 2013.Signed [Signature] L.S. or R.C.E. Number 7889**COUNTY SURVEYOR'S STATEMENT**This Corner Record was received May 10, 2013, and examined  
and filed May 15, 2013.Signed \_\_\_\_\_ R.C.E. No. 26994Title County Surveyor

County Surveyor's Comment \_\_\_\_\_

(D.D. Sheet No. 15B)

# HUTCHINS STREET



# HUTCHINS STREET

