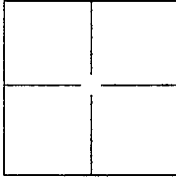


# CORNER RECORD

Document Number CR-13-97  
City of Manteca County of San Joaquin, California

Brief Legal Description E. 1/2 of SW 1/4 of SE 1/4 of Sec. 29, T.1S., R.7E., M.D.B. & M., Louise Manor  
Unit 4, M.&P.19-18, S.J.C.R., Centerline BC Yvonne Ave. South to Diane Dr., Manteca



## CORNER TYPE

Government Corner ☐ Control ☐  
Meander ☐ Property ☐  
Rancho ☐ Other ☒

Date of Survey August 11, 2012

## COORDINATES(Optional)

N. \_\_\_\_\_  
E. \_\_\_\_\_  
Zone \_\_\_\_\_ NAD27 ☐ NAD83 ☐  
NAD83 Epoch \_\_\_\_\_  
Elev. \_\_\_\_\_  
Vert. Datum: NGVD29 ☐ NADV88 ☐  
Meas. Units: Metric ☐ Imperial ☒

Corner - Left as found ☒ Found and tagged ☐ Established ☐ Reestablished ☐ Rebuilt ☐

Identification and type of corner found: Evidence used to identify or procedure used to establish or reestablish the corner:

Fd. 3/4" Iron Pipe, called 1" Iron Pipe tagged R.C.E. 5905 per M.&P. 19-18, S.J.C.R. at EC of Yvonne Avenue  
South of Diane Drive.

A description of the physical condition of the monument as found and as set or reset: \_\_\_\_\_

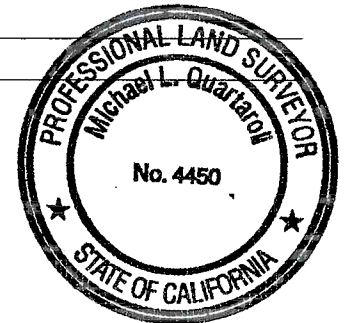
Set plastic cap stamped L.S. 4450 and set two 2.00 feet 1-1/4" Mag Nail reference points as shown on page 2.

## SURVEYOR'S STATEMENT

This Corner Record was prepared by me or under my direction in conformance with

the Land Surveyor's Act on February 7, 2013.

Signed Michael L. Quartararo P.L.S. or R.C.E. No.: L.S. 4450



## COUNTY SURVEYOR'S STATEMENT

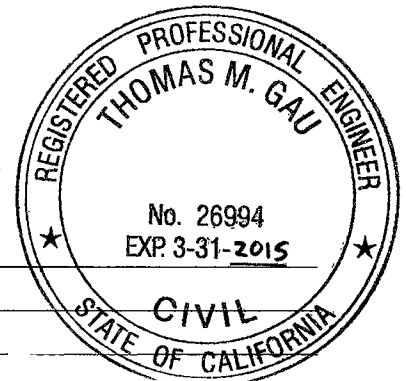
This Corner Record was received February 19, 2013 and examined

and filed MAY 12, 2013.

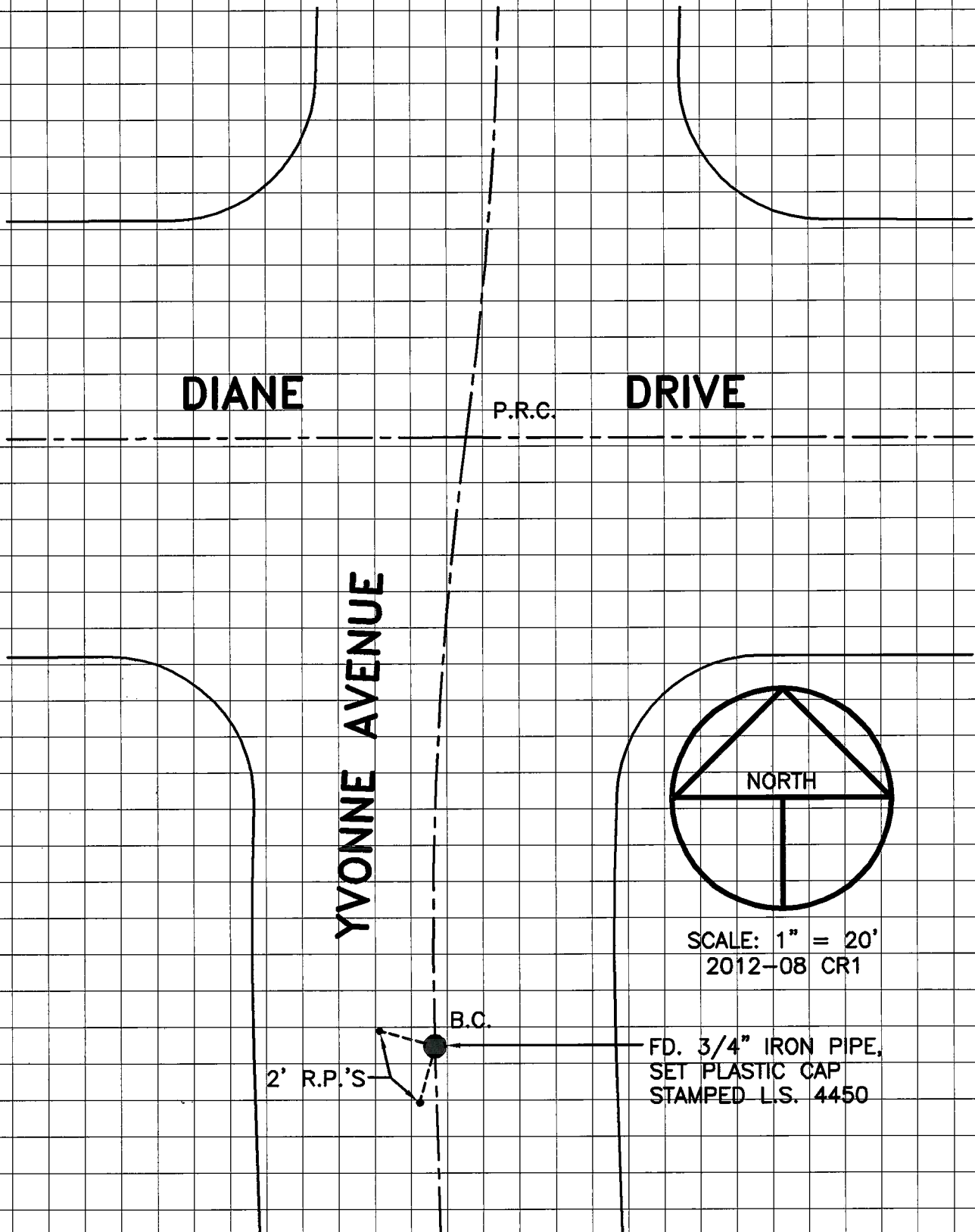
Signed Thomas M. Gau P.L.S. or R.C.E. No.: 26994

Title COUNTY SURVEYOR

County Surveyor's Comment \_\_\_\_\_



# PRE-CONSTRUCTION CORNER RECORD



NO ATTEMPT WAS MADE TO VERIFY THE  
POSITION OF THE MONUMENT