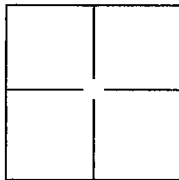


# CORNER RECORD

Document Number CR-13-95  
City of \_\_\_\_\_ County of San Joaquin, California

Brief Legal Description Monuments in Section 35 & 47 of Weber Grant



## CORNER TYPE

Government Corner ☐ Control ☐  
Meander ☐ Property ☒  
Rancho ☐ Other ☒

Date of Survey September 21, 2012

## COORDINATES(Optional)

N. \_\_\_\_\_  
E. \_\_\_\_\_  
Zone 3 NAD27 ☐ NAD83 ☒  
NAD83 Epoch \_\_\_\_\_  
Elev. \_\_\_\_\_  
Vert. Datum: NGVD29 ☐ NADV88 ☐  
Meas. Units: Metric ☐ Imperial ☒

Corner - Left as found ☒ Found and tagged ☐ Established ☐ Reestablished ☐ Rebuilt ☐

Identification and type of corner found: Evidence used to identify or procedure used to establish or reestablish the corner:

Multiple monuments on Carpenter Road were found and surveyed. This work was done by CLSA

Central Valley Chapter volunteers as part of an effort to preserve property corner monuments during San

Joaquin County summer chip seal projects. The coordinates shown on this corner record are based on the

California Central Valley Control Network, Epoch Date 2012-09-23, Version 1.01. A copy of the control survey  
is available from KSN in digital form upon request.

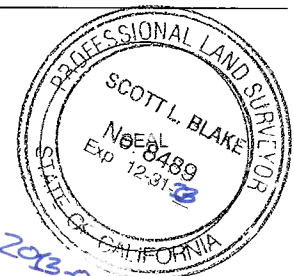
A description of the physical condition of the monument as found and as set or reset: See the back of this corner record for a  
description of found property corner monuments. Monument photos and

field notes are available in digital form from KSN or the CLSA California Central Valley Chapter. The combined  
scale factor for the coordinates shown is 0.9999369800. The mapping angle is -00-27-42. Both the combined  
scale factor and the mapping angle for this corner record were calculated at Point #333.

## SURVEYOR'S STATEMENT

This Corner Record was prepared by me or under my direction in conformance with  
the Land Surveyor's Act on February 1, 2013.

Signed [Signature] P.L.S. or R.C.E. No.: PLS 8489



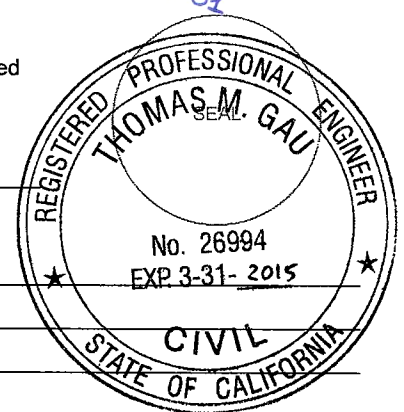
## COUNTY SURVEYOR'S STATEMENT

This Corner Record was received APRIL 8, 2013 and examined  
and filed MAY 11, 2013.

Signed Thomas M. Gau P.L.S. or R.C.E. No.: 26994

Title COUNTY SURVEYOR

County Surveyor's Comment \_\_\_\_\_



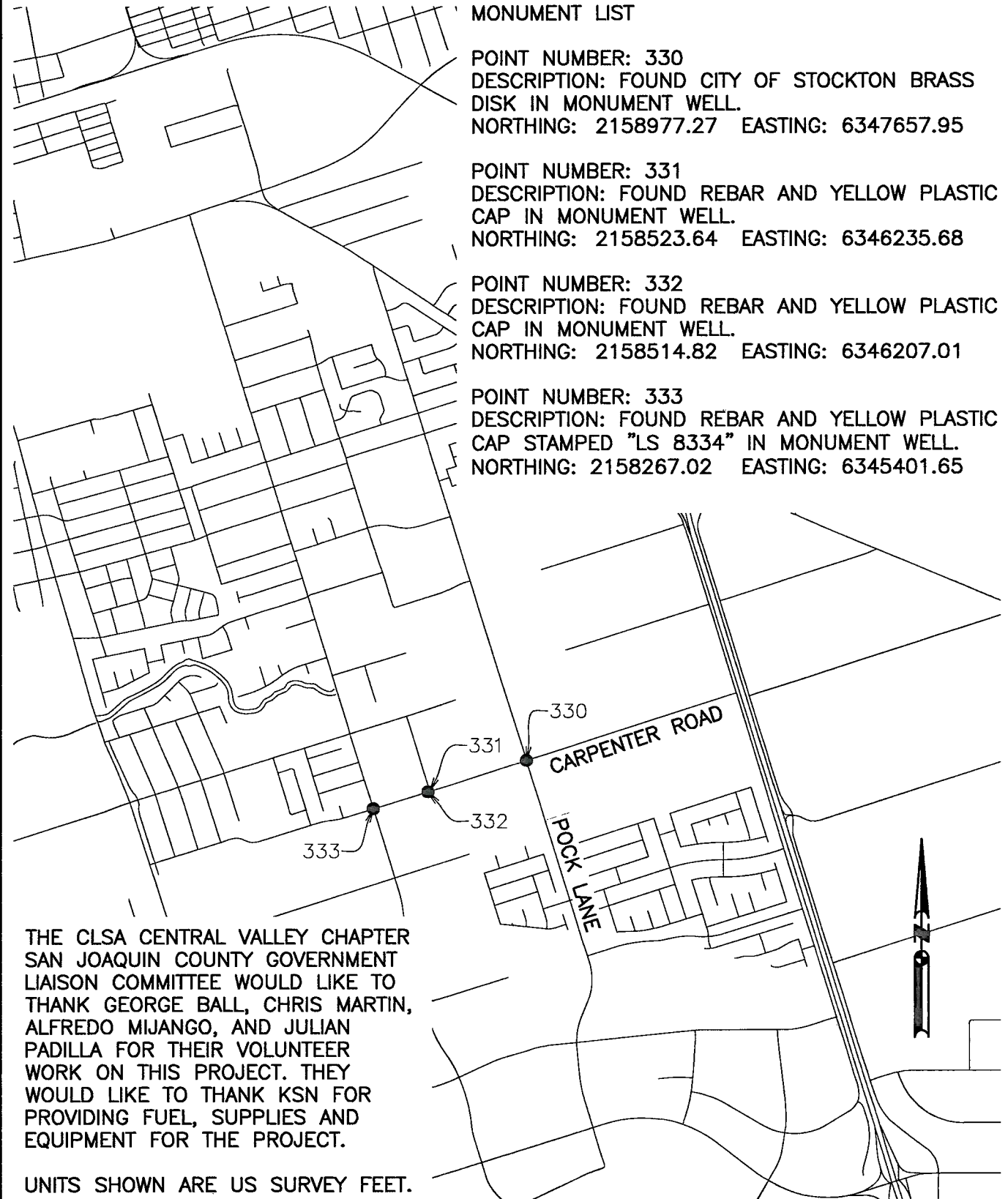
# MONUMENT LIST

POINT NUMBER: 330  
DESCRIPTION: FOUND CITY OF STOCKTON BRASS  
DISK IN MONUMENT WELL.  
NORTHING: 2158977.27 EASTING: 6347657.95

POINT NUMBER: 331  
DESCRIPTION: FOUND REBAR AND YELLOW PLASTIC  
CAP IN MONUMENT WELL.  
NORTHING: 2158523.64 EASTING: 6346235.68

POINT NUMBER: 332  
DESCRIPTION: FOUND REBAR AND YELLOW PLASTIC  
CAP IN MONUMENT WELL.  
NORTHING: 2158514.82 EASTING: 6346207.01

POINT NUMBER: 333  
DESCRIPTION: FOUND REBAR AND YELLOW PLASTIC  
CAP STAMPED "LS 8334" IN MONUMENT WELL.  
NORTHING: 2158267.02 EASTING: 6345401.65



THE CLSA CENTRAL VALLEY CHAPTER  
SAN JOAQUIN COUNTY GOVERNMENT  
LIAISON COMMITTEE WOULD LIKE TO  
THANK GEORGE BALL, CHRIS MARTIN,  
ALFREDO MIJANGO, AND JULIAN  
PADILLA FOR THEIR VOLUNTEER  
WORK ON THIS PROJECT. THEY  
WOULD LIKE TO THANK KSN FOR  
PROVIDING FUEL, SUPPLIES AND  
EQUIPMENT FOR THE PROJECT.

UNITS SHOWN ARE US SURVEY FEET.

**KJELDEN  
SINNOCK  
NEUDECK**  
INC.  
Civil Engineers  
and Land Surveyors

711 N. Pershing Avenue  
Stockton, CA 95203-2152  
Office: (209) 946-0268  
Faxes: (209) 946-0296  
E-mail: KSN@ksninc.com

CLSA CENTRAL VALLEY CHAPTER  
SUMMER 2012 SAN JOAQUIN COUNTY  
**CHIP SEAL PROJECTS  
CORNER RECORD**

Design  
SLB  
Drawn  
SLB  
Check  
BAS

Scale  
1"=4000'  
Original Drawing Scale  
0 1/4" 1/2"

Date  
JANUARY 2013  
Sheet Number  
2 Of 2  
Project File No.