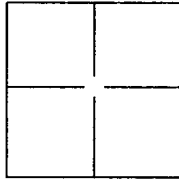


# CORNER RECORD

Document Number CR-13-91

City of \_\_\_\_\_

County of San Joaquin, CaliforniaBrief Legal Description Monuments in Sections 23, 24 & 25, T4N R7E, MDB&M**CORNER TYPE**

Government Corner	<input type="checkbox"/>	Control	<input type="checkbox"/>
Meander	<input type="checkbox"/>	Property	<input checked="" type="checkbox"/>
Rancho	<input type="checkbox"/>	Other	<input checked="" type="checkbox"/>

Date of Survey September 3, 2012**COORDINATES(Optional)**

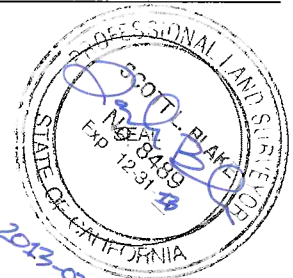
N. \_\_\_\_\_  
E. \_\_\_\_\_  
Zone 3 NAD27 ☐ NAD83 ☒  
NAD83 Epoch \_\_\_\_\_  
Elev. \_\_\_\_\_  
Vert. Datum: NGVD29 ☐ NADV88 ☐  
Meas. Units: Metric ☐ Imperial ☒

Corner - Left as found ☒ Found and tagged ☐ Established ☐ Reestablished ☐ Rebuilt ☐

Identification and type of corner found: Evidence used to identify or procedure used to establish or reestablish the corner:

Multiple monuments on the centerline of Elliot Road were found and surveyed. This work was done by CLSACentral Valley Chapter volunteers as part of an effort to preserve property corner monuments during SanJoaquin County summer chip seal projects. The coordinates shown on this corner record are based on theCalifornia Central Valley Control Network, Epoch Date 2012-09-23, Version 1.01. A copy of the control surveyis available from KSN in digital form upon request.A description of the physical condition of the monument as found and as set or reset: See the back of this corner record for adescription of found property corner monuments and monuments set as local survey control. Monument photos andfield notes are available in digital form from KSN or the CLSA California Central Valley Chapter. The combinedscale factor for the coordinates shown is 0.9999574200. The mapping angle is -00-24-37. Both the combinedscale factor and mapping angle for this corner record were calculated at Point #1204.**SURVEYOR'S STATEMENT**

This Corner Record was prepared by me or under my direction in conformance with

the Land Surveyor's Act on February 1, 2013.Signed [Signature] P.L.S. or R.C.E. No.: PLS 8489**COUNTY SURVEYOR'S STATEMENT**This Corner Record was received APRIL 8, 2013 and examinedand filed MAY 12, 2013.Signed Thomas M. Gau P.L.S. or R.C.E. No.: 26994Title COUNTY SURVEYOR

County Surveyor's Comment \_\_\_\_\_



# MONUMENT LIST

POINT NUMBER: 316  
 DESCRIPTION: FOUND  $\frac{3}{4}$ " REBAR IN MON WELL.  
 NORTHING: 2256572.99 EASTING: 6368984.76

POINT NUMBER: 604  
 DESCRIPTION: FOUND BOLT AND WASHER IN MONUMENT WELL.  
 NORTHING: 2254070.70 EASTING: 6369051.92

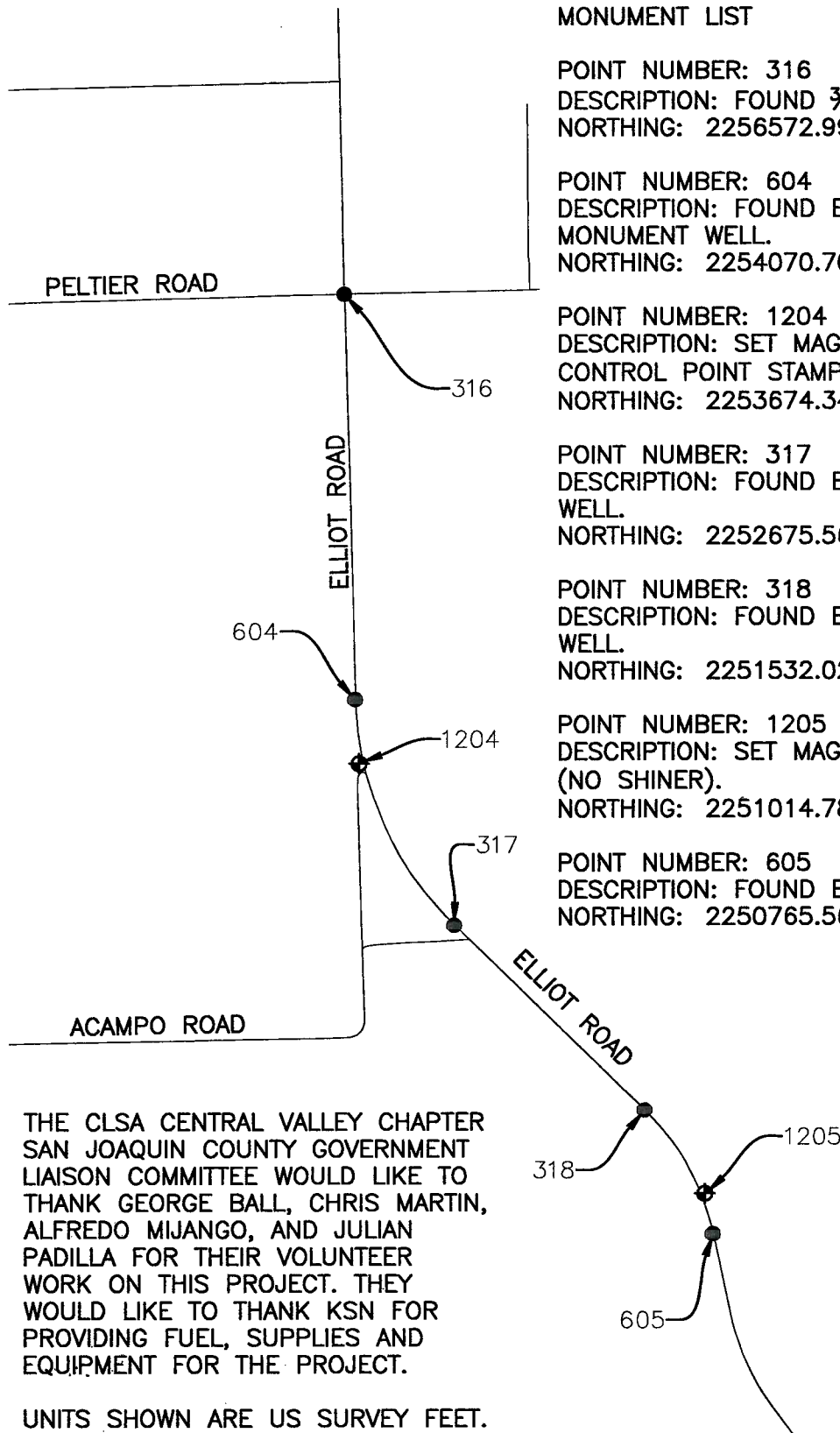
POINT NUMBER: 1204  
 DESCRIPTION: SET MAG NAIL AND SHINER AS CONTROL POINT STAMPED "PLS 8489".  
 NORTHING: 2253674.34 EASTING: 6369075.64

POINT NUMBER: 317  
 DESCRIPTION: FOUND BOLT & WASHER IN MON WELL.  
 NORTHING: 2252675.56 EASTING: 6369663.36

POINT NUMBER: 318  
 DESCRIPTION: FOUND BOLT & WASHER IN MON WELL.  
 NORTHING: 2251532.02 EASTING: 6370838.86

POINT NUMBER: 1205  
 DESCRIPTION: SET MAG NAIL AS CONTROL POINT (NO SHINER).  
 NORTHING: 2251014.78 EASTING: 6371211.65

POINT NUMBER: 605  
 DESCRIPTION: FOUND BOLT IN MONUMENT WELL.  
 NORTHING: 2250765.56 EASTING: 6371261.64



THE CLSA CENTRAL VALLEY CHAPTER  
 SAN JOAQUIN COUNTY GOVERNMENT  
 LIAISON COMMITTEE WOULD LIKE TO  
 THANK GEORGE BALL, CHRIS MARTIN,  
 ALFREDO MIJANGO, AND JULIAN  
 PADILLA FOR THEIR VOLUNTEER  
 WORK ON THIS PROJECT. THEY  
 WOULD LIKE TO THANK KSN FOR  
 PROVIDING FUEL, SUPPLIES AND  
 EQUIPMENT FOR THE PROJECT.

UNITS SHOWN ARE US SURVEY FEET.

**KJELDSSEN  
 SINNOCK  
 NEUDECK**  
 INC.  
 Civil Engineers  
 and Land Surveyors

711 N. Pershing Avenue  
 Stockton, CA 95203-2152  
 Office: (209) 946-0268  
 Fax: (209) 946-0266  
 E-mail: KSN@ksninc.com

CLSA CENTRAL VALLEY CHAPTER  
 SUMMER 2012 SAN JOAQUIN COUNTY  
**CHIP SEAL PROJECTS  
 CORNER RECORD**

Design SLB	Scale 1"=1000'	Date JANUARY 2013
Drawn SLB	Original Drawing Scale 0 1/4" 1/2"	Sheet Number 2 Of 2
Check BAS		Project File No.