

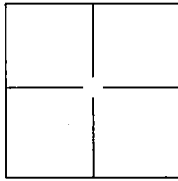
# CORNER RECORD

Document Number CR-13-71

City of Stockton

County of San Joaquin, California

Brief Legal Description Witness corner of the SW corner of Lot 2 of Block 241 East of Center.



## CORNER TYPE

Government Corner ☐ Control ☐  
Meander ☐ Property ☐  
Rancho ☐ Other ☒

Date of Survey October 10, 2012

## COORDINATES(Optional)

N. \_\_\_\_\_  
E. \_\_\_\_\_  
Zone \_\_\_\_\_ NAD27 ☐ NAD83 ☐  
NAD83 Epoch \_\_\_\_\_  
Elev. \_\_\_\_\_  
Vert. Datum: NGVD29 ☐ NADV88 ☐  
Meas. Units: Metric ☐ Imperial ☒

Corner - Left as found ☒ Found and tagged ☐ Established ☐ Reestablished ☐ Rebuilt ☐

Identification and type of corner found: Evidence used to identify or procedure used to establish or reestablish the corner:

Fd. old chiseled cross witness corner of the Southwest corner of Lot 2 of Block 241 East of Center.

A description of the physical condition of the monument as found and as set or reset: \_\_\_\_\_

Set two 1-1/4" Magnetic Nail ties as shown on sheet 2.

## SURVEYOR'S STATEMENT

This Corner Record was prepared by me or under my direction in conformance with

the Land Surveyor's Act on February 7, 2013

Signed Michael L. Quatran P.L.S. or R.C.E. No.: L.S. 4450



## COUNTY SURVEYOR'S STATEMENT

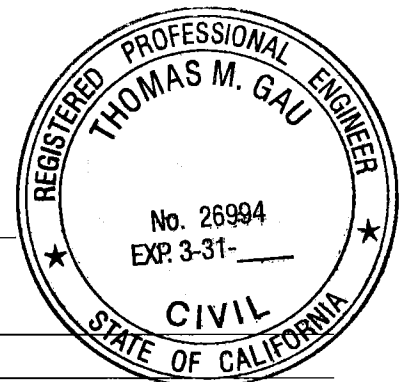
This Corner Record was received February 19, 2013 and examined

and filed March 22, 2013

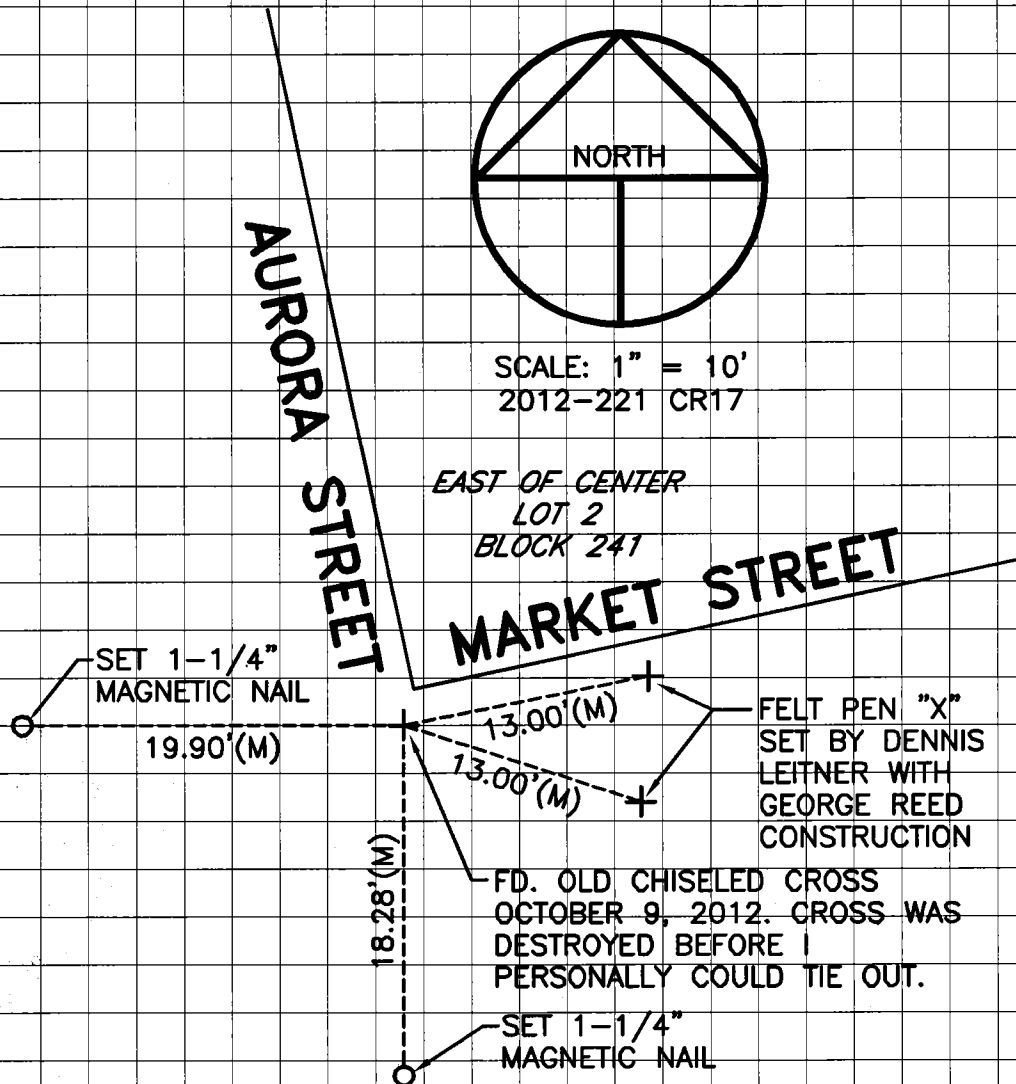
Signed Thomas M. Gau P.L.S. or R.C.E. No.: 26994

Title County Surveyor

County Surveyor's Comment \_\_\_\_\_



# PRE-CONSTRUCTION CORNER RECORD



THE 13-FOOT FELT TIP PEN SWING TIES WERE SET BY DENNIS LEITNER AND GREG RIVERA, SUPERINTENDENT AND FOREMAN FOR GEORGE REED CONSTRUCTION. A SWORN STATEMENT TO THIS INFORMATION IS DOCUMENTED IN QUARTAROLI & ASSOCIATES, INC. FIELD BOOK NO. 178, PAGE 3.

NO ATTEMPT WAS MADE TO VERIFY THE POSITION OF THE MONUMENT