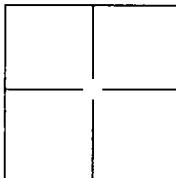


CORNER RECORD

Document Number CR-13-70City of StocktonCounty of San Joaquin, CaliforniaBrief Legal Description Witness corner of the NE corner of Lot 11 of Block 90 West of Center.**CORNER TYPE**

Government Corner ☐ Control ☐
Meander ☐ Property ☐
Rancho ☐ Other ☒

Date of Survey October 10, 2012**COORDINATES(Optional)**

N. _____
E. _____
Zone _____ NAD27 ☐ NAD83 ☐
NAD83 Epoch _____
Elev. _____
Vert. Datum: NGVD29 ☐ NADV88 ☐
Meas. Units: Metric ☐ Imperial ☒

Corner - Left as found ☒ Found and tagged ☐ Established ☐ Reestablished ☐ Rebuilt ☐

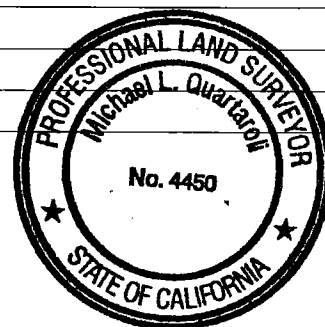
Identification and type of corner found: Evidence used to identify or procedure used to establish or reestablish the corner:

Fd. old chiseled crosses witness corner of the Northeast corner of Lot 11 of Block 90 West of Center.

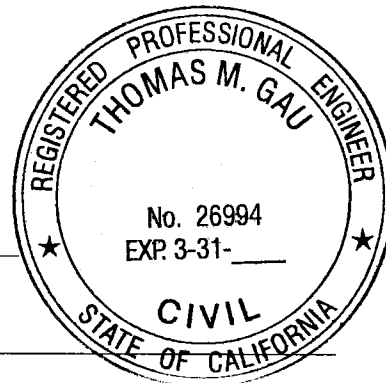
A description of the physical condition of the monument as found and as set or reset: _____

Set two 1-1/4" Magnetic Nail ties as shown on sheet 2.**SURVEYOR'S STATEMENT**

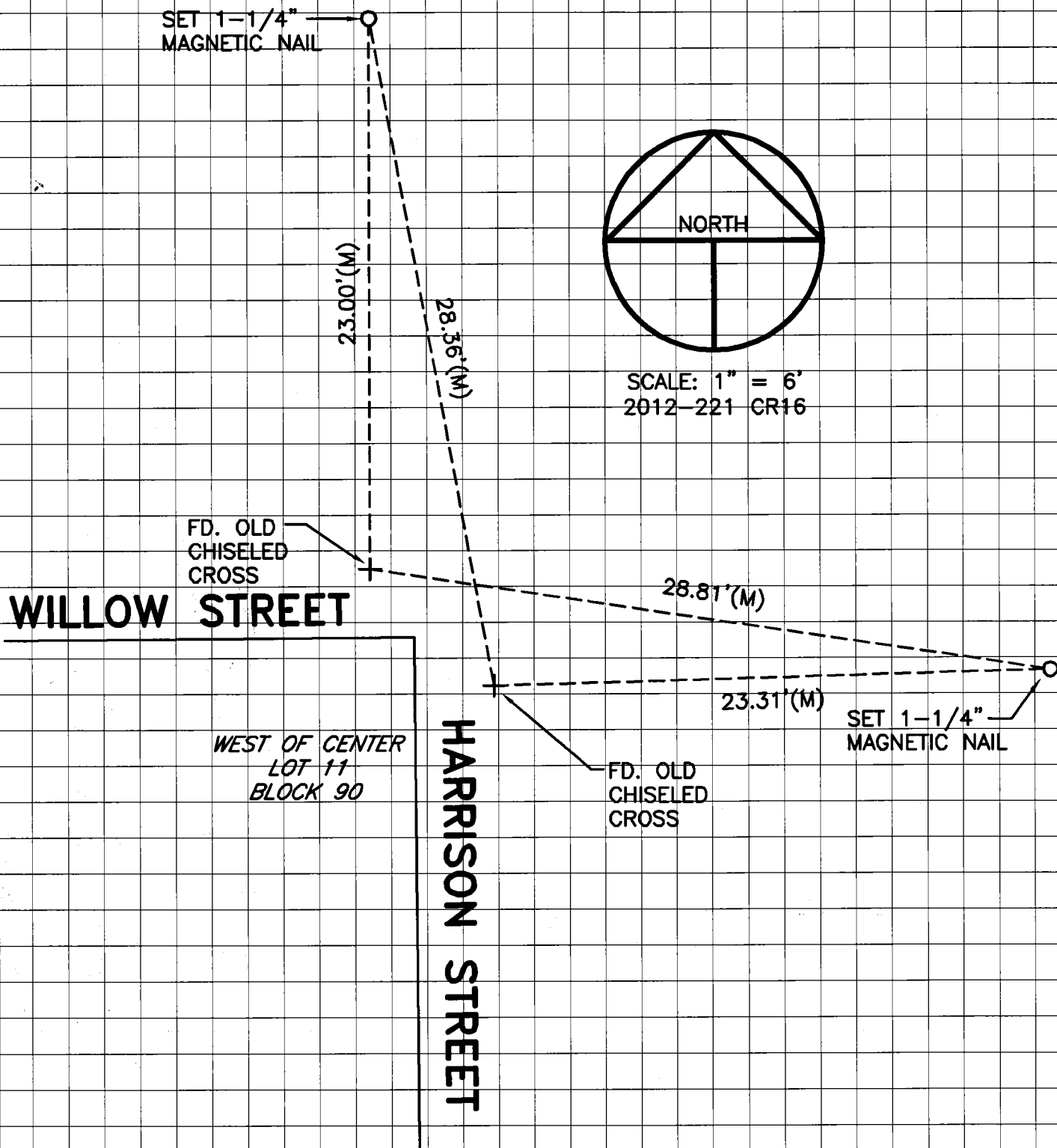
This Corner Record was prepared by me or under my direction in conformance with

the Land Surveyor's Act on February 7, 2013Signed Michael L. Quarata P.L.S. or R.C.E. No.: L.S. 4450**COUNTY SURVEYOR'S STATEMENT**This Corner Record was received February 19, 2013 and examinedand filed March 22, 2013Signed Thomas M. Gau P.L.S. or R.C.E. No.: 26994Title County Surveyor

County Surveyor's Comment _____



PRE-CONSTRUCTION CORNER RECORD



NO ATTEMPT WAS MADE TO VERIFY THE
POSITION OF THE MONUMENT