

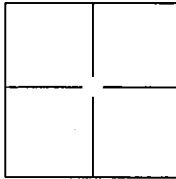
CORNER RECORD

Document Number CR-13-61

City of Stockton

County of San Joaquin, California

Brief Legal Description Witness corner of the NE corner of Lot 11 of Block 72 East of Center.



CORNER TYPE

Government Corner ☐ Control ☐
Meander ☐ Property ☐
Rancho ☐ Other ☒

Date of Survey October 10, 2012

COORDINATES(Optional)

N. _____
E. _____
Zone _____ NAD27 ☐ NAD83 ☐
NAD83 Epoch _____
Elev. _____
Vert. Datum: NGVD29 ☐ NADV88 ☐
Meas. Units: Metric ☐ Imperial ☒

Corner - Left as found ☒ Found and tagged ☐ Established ☐ Reestablished ☐ Rebuilt ☐

Identification and type of corner found: Evidence used to identify or procedure used to establish or reestablish the corner:

Fd. saw cut and scribed crosses witness corners of the Northeast corner of Lot 11 of Block 72 East of Center.

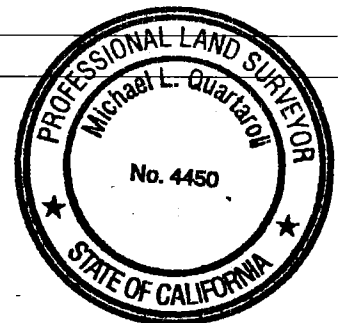
A description of the physical condition of the monument as found and as set or reset: _____

Set two 1-1/4" Magnetic Nail ties as shown on sheet 2.

SURVEYOR'S STATEMENT

This Corner Record was prepared by me or under my direction in conformance with
the Land Surveyor's Act on February 7, 2013.

Signed Michael L. Quartarom P.L.S. or R.C.E. No.: L.S. 4450



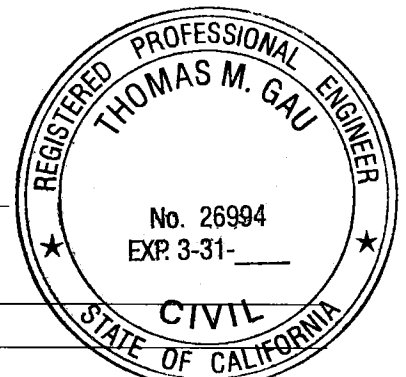
COUNTY SURVEYOR'S STATEMENT

This Corner Record was received February 19, 2013 and examined
and filed March 23, 2013

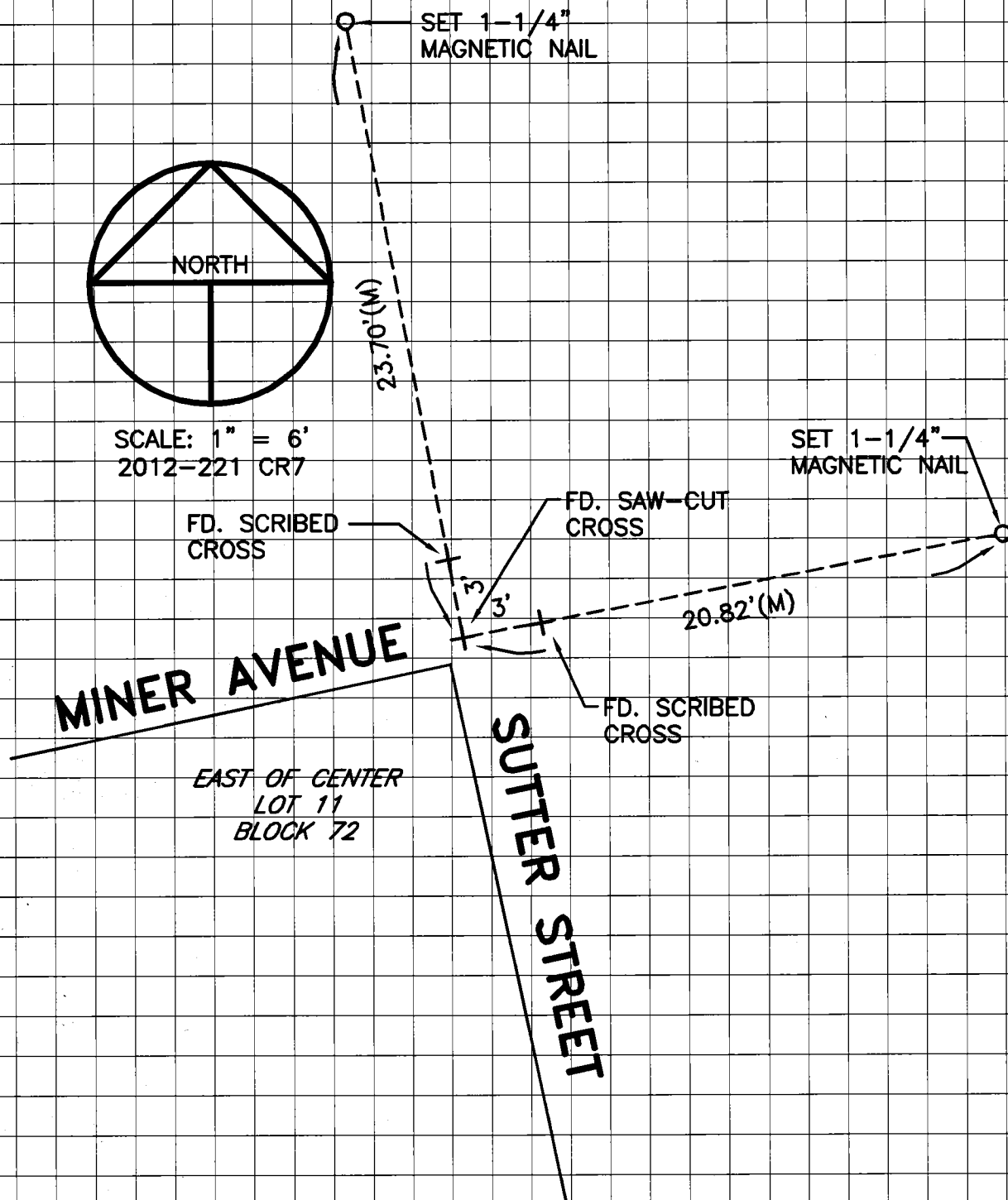
Signed Thomas M. Gau P.L.S. or R.C.E. No.: 26994

Title County Surveyor

County Surveyor's Comment _____



PRE-CONSTRUCTION CORNER RECORD



NO ATTEMPT WAS MADE TO VERIFY THE
POSITION OF THE MONUMENT