

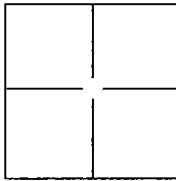
CORNER RECORD

Document Number CR-13-57

City of Stockton

County of San Joaquin, California

Brief Legal Description Witness corner of the SE corner of Lot 1 of Block A per M.&P. 2-50, S.J.C.R.



CORNER TYPE

Government Corner ☐ Control ☐
Meander ☐ Property ☐
Rancho ☐ Other ☒

Date of Survey October 8, 2012

COORDINATES(Optional)

N. _____
E. _____
Zone _____ NAD27 ☐ NAD83 ☐
NAD83 Epoch _____
Elev. _____
Vert. Datum: NGVD29 ☐ NADV88 ☐
Meas. Units: Metric ☐ Imperial ☒

Corner - Left as found ☒ Found and tagged ☐ Established ☐ Reestablished ☐ Rebuilt ☐

Identification and type of corner found: Evidence used to identify or procedure used to establish or reestablish the corner:

Fd. Chiseled cross witness corner of the Southeasterly corner of Lot 1 of Block A per M.&P. 2-50, S.J.C.R.

A description of the physical condition of the monument as found and as set or reset: _____

Set two 1-1/4" Magnetic Nail ties as shown on sheet 2.

SURVEYOR'S STATEMENT

This Corner Record was prepared by me or under my direction in conformance with

the Land Surveyor's Act on February 7, 2013.

Signed Michael L. Quartaroli P.L.S. or R.C.E. No.: L.S. 4450



COUNTY SURVEYOR'S STATEMENT

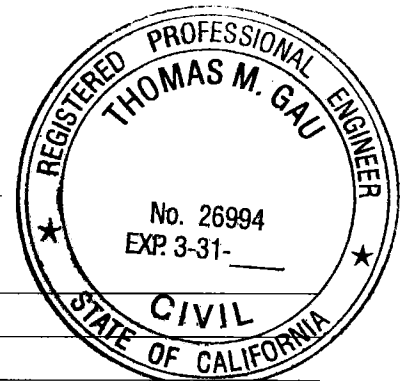
This Corner Record was received February 19, 2013 and examined

and filed March 22, 2013.

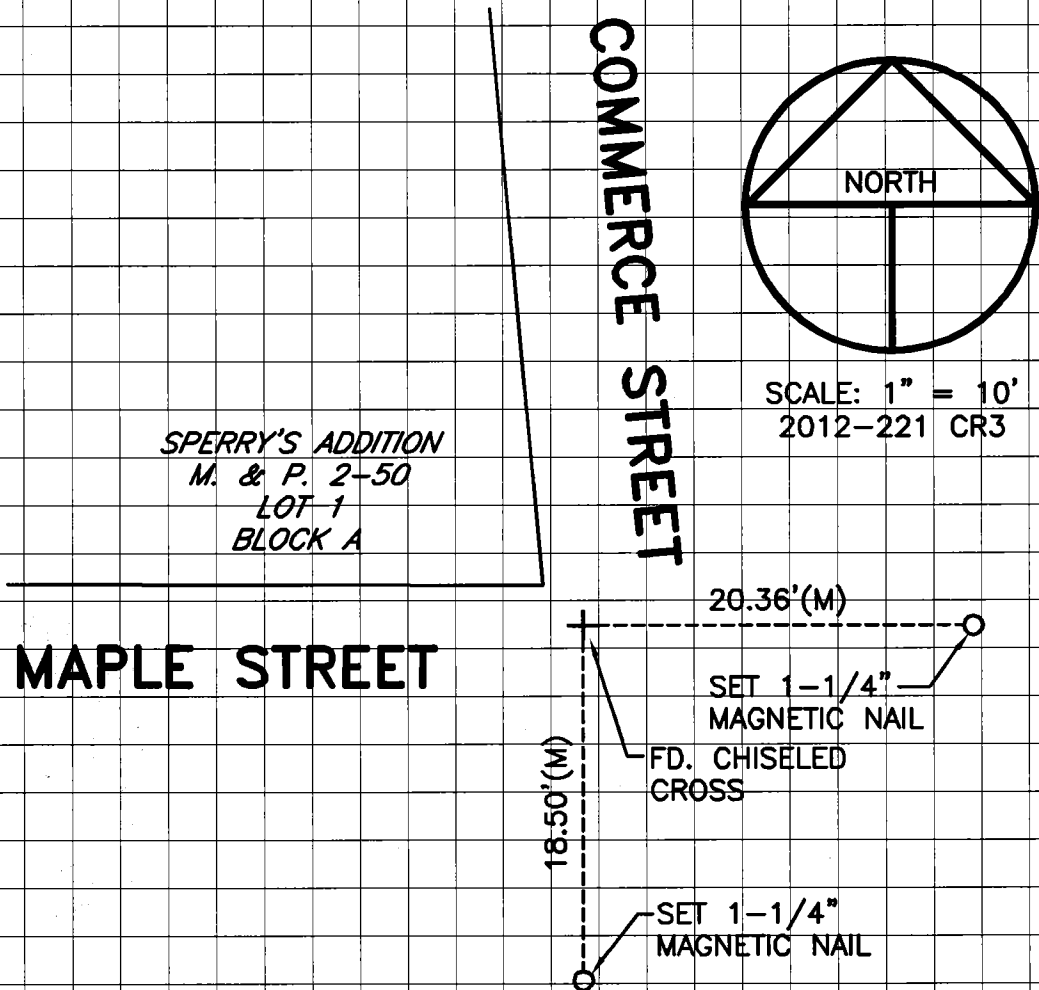
Signed Thomas M. Gau P.L.S. or R.C.E. No.: 26994

Title County Surveyor

County Surveyor's Comment _____



PRE-CONSTRUCTION CORNER RECORD



NO ATTEMPT WAS MADE TO VERIFY THE
POSITION OF THE MONUMENT