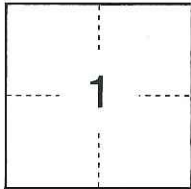
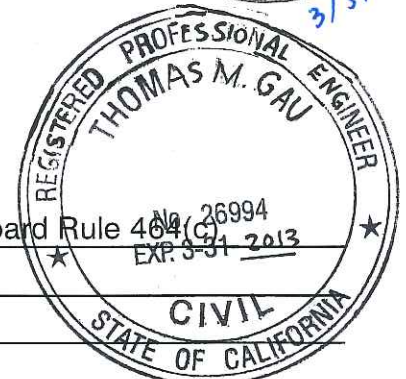
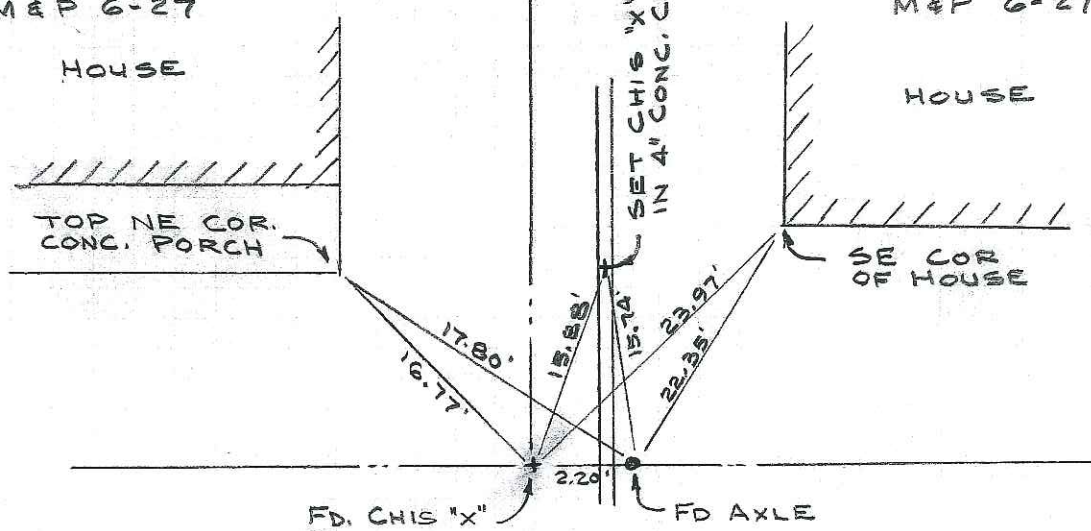


CORNER RECORDCity of LodiDocument Number CR-13-52
County of San Joaquin, CaliforniaBrief Legal Description Hutchins Street in Section 1, T.3N, R.6E, M.D.B.&M.**CORNER TYPE**Government Corner ☐ Control ☐
Meander ☐ Property ☐
Rancho ☐ Other ☒Date of Survey June 25, 2012**COORDINATES (Optional)**N. _____
E. _____
Zone _____ NAD27 ☐ NAD83 ☐
NAD83 Epoch _____
Elev. _____
Vert. Datum: NGVD29 ☐ NAVD88 ☐
Meas. Units: Metric ☐ Imperial ☒Corner - Left as found ☒ Found and tagged ☐ Established ☐ Reestablished ☐ Rebuilt ☐Identification and type of corner found: Evidence used to identify or procedure used to establish or reestablish the corner:
It is the purpose of this corner record to perpetuate the established position of existing monuments.No attempt was made to determine the validity of the monuments or their proper locations in relation to legal boundary lines in the area.A description of the physical condition of the monument as found and as set or reset: Existing monuments found include multiple axles and a chiseled cross, all in good condition.**SURVEYOR'S STATEMENT**This Corner Record was prepared by me or under my direction in conformance with the Land Surveyors' Act on March 5, 2013.Signed [Signature] **L.S. or R.C.E.** Number 7889**COUNTY SURVEYOR'S STATEMENT**This Corner Record was received March 6, 2013, and examined and filed April 3, 2013.Signed [Signature] R.C.E. No. 26994
Title County Surveyor**County Surveyor's Comment** This Corner Record is not in compliance with Board Rule 404(C) regarding submittal within 90 days from the date of survey.(D.D. Sheet No. 15B)

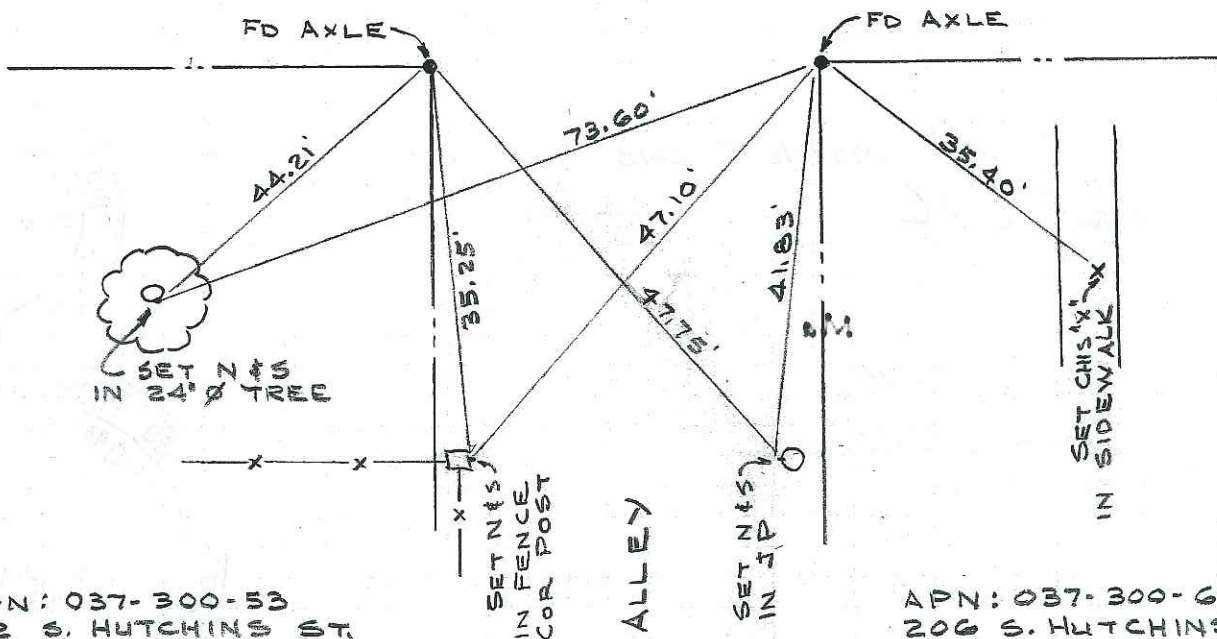
APN: 037-310-42
 211 S. HUTCHINS ST.
 LOT 3
 M&P 6-27

APN: 037-310-43
 207 S. HUTCHINS ST.
 LOT 2
 M&P 6-27



HUTCHINS STREET

HUTCHINS STREET



APN: 037-300-53
 212 S. HUTCHINS ST.
 PORTION OF LOT 1, BLOCK 12
 M&P 1-58

APN: 037-300-61
 206 S. HUTCHINS ST.
 PORTION OF LOT 14, BLOCK 11
 M&P 1-58