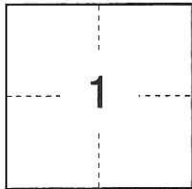
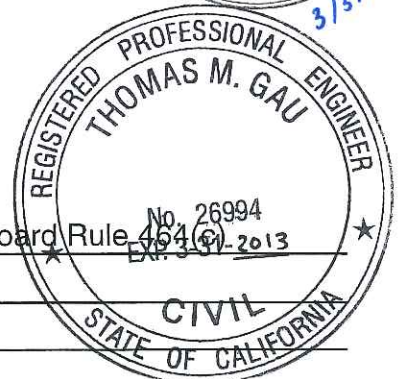
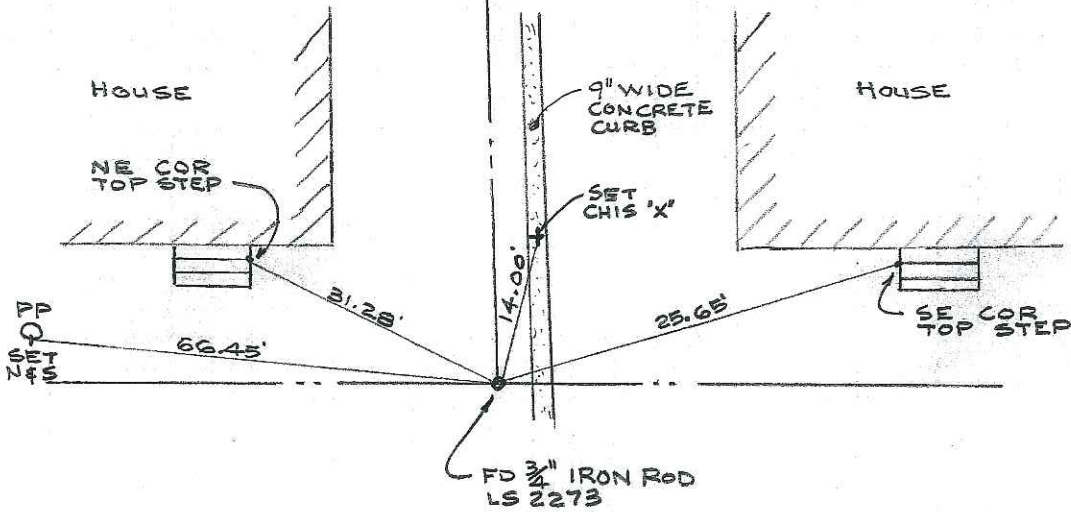


**CORNER RECORD**City of LodiDocument Number CR-13-51  
County of San Joaquin, CaliforniaBrief Legal Description Hutchins Street in Section 1, T.3N, R.6E, M.D.B.&M.**CORNER TYPE**Government Corner ☐ Control ☐  
Meander ☐ Property ☐  
Rancho ☐ Other ☒Date of Survey June 25, 2012**COORDINATES (Optional)**N. \_\_\_\_\_  
E. \_\_\_\_\_  
Zone \_\_\_\_\_ NAD27 ☐ NAD83 ☐  
NAD83 Epoch \_\_\_\_\_  
Elev. \_\_\_\_\_  
Vert. Datum: NGVD29 ☐ NAVD88 ☐  
Meas. Units: Metric ☐ Imperial ☒Corner - Left as found ☒ Found and tagged ☐ Established ☐ Reestablished ☐ Rebuilt ☐Identification and type of corner found: Evidence used to identify or procedure used to establish or reestablish the corner:  
It is the purpose of this corner record to perpetuate the established position of existing monuments.No attempt was made to determine the validity of the monuments or their proper locations in relation  
to legal boundary lines in the area.A description of the physical condition of the monument as found and as set or reset: Existing monuments found  
include 3/4" iron rod and an axle, all in good condition.**SURVEYOR'S STATEMENT**This Corner Record was prepared by me or under my direction in conformance with  
the Land Surveyors' Act on March 5, 2013.Signed [Signature] (L.S. or R.C.E. Number 7889)**COUNTY SURVEYOR'S STATEMENT**This Corner Record was received March 6, 2013, and examined  
and filed April 3, 2013.Signed Thomas M. Gau R.C.E. No. 26994Title County SurveyorCounty Surveyor's Comment This Corner Record is not in compliance with Board Rule 454(6) regarding submittal within 90 days from the date of survey.(D.D. Sheet No. 15B)

APN: 037-310-39  
 241 S. HUTCHINS ST.  
 LOT 6  
 M & P G-27

APN: 037-310-40  
 235 S. HUTCHINS ST.  
 LOT 5  
 M & P G-27

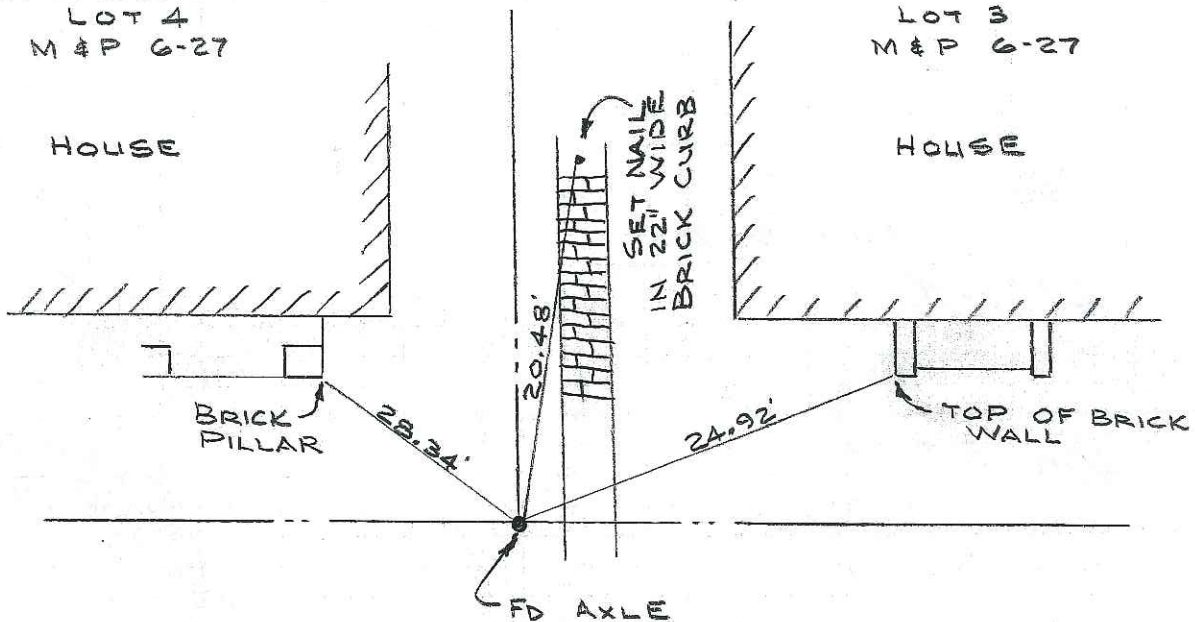


HUTCHINS STREET



APN: 037-310-41  
 215 S. HUTCHINS ST.  
 LOT 4  
 M & P G-27

APN: 037-310-42  
 211 S. HUTCHINS ST.  
 LOT 3  
 M & P G-27



HUTCHINS STREET

