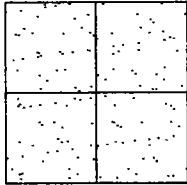


CORNER RECORD

Document Number CR-12-459
County of San Joaquin, California

City of _____

Brief Legal Description LIVE OAK ROAD 2821' +/- EAST OF NORTH 99 FRONTAGE ROAD
(WITHIN SECTION 30, TOWNSHIP 3 NORTH, RANGE 7 EAST, MOUNT DIABLO BASE & MERIDIAN)



CORNER TYPE

Government Corner ☐ Control ☐
Meander ☐ Property ☐
Rancho ☐ Other ☒

Date of Survey October 15, 2012

COORDINATES (Optional)

N. _____
E. _____
Zone _____ NAD27 ☐ NAD83 ☐
NAD83 Epoch _____
Elev. _____
Vert. Datum: NGVD29 ☐ NAVD83 ☐
Meas. Units: Metric ☐ Imperial ☒

Corner - Left as found ☒ Found and tagged ☐ Established ☐ Reestablished ☐ Rebuilt ☐

Identification and type of corner found: Evidence used to identify or procedure used to establish or reestablish the corner:
SEE SKETCH ON BACKSIDE.

A description of the physical condition of the monument as found and as set or reset: _____
SEE SKETCH ON BACKSIDE.

SURVEYOR'S STATEMENT

This Corner Record was prepared by me or under my direction in conformance with
the Land Surveyors' Act on November 13, 2012.

Signed James E. Hart P.L.S. Number 8657

COUNTY SURVEYOR'S STATEMENT

This Corner Record was received NOVEMBER 13, 2012 and examined
and filed January 16, 2013.

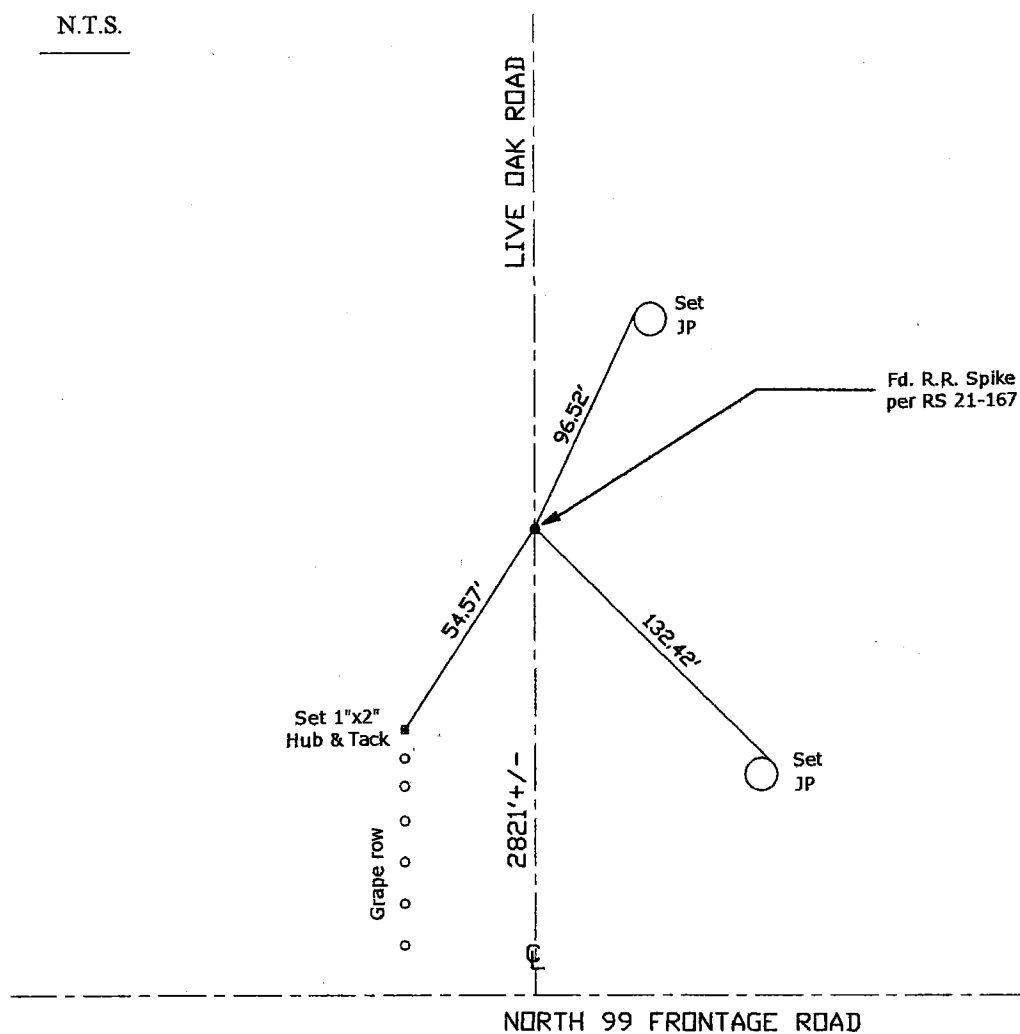
Signed Thomas M. Gau R.C.E. No. 26994
Title County Surveyor

County Surveyor's Comment _____





N.T.S.



: Found Monuments are not tagged
as otherwise noted.

Attempt Was Made to Verify the Monument(s)"

Conc. Nail with Brass Washer Stamped

"S.J. Co.", unless otherwise noted

Found Conc. Nail with Brass Washer Stamped

"S.J. Co.", unless otherwise noted

ence Post

oint Pole

ight Pole

ower Pole

uy Pole

ervice Pole

elephone Pole

=Searched Found Nothing

.=Not To Scale

=Maps & Plats

Parcel Map

Record of Survey

Field Book