

# CORNER RECORD

Document Number CR-12-443  
County of SAN JOAQUIN, California

City of WOODBIDGE

Brief Legal Description MONUMENT AT THE INTERSECTION OF LILAC STREET AND WOODS STREET  
LOCATED IN THE NORTHEAST QUARTER OF SECTION 34, T.4N, R.6E, M.D.B.&M.

## CORNER TYPE

## COORDINATES (Optional)

NW 1/4	NE 1/4
SW 1/4	SE 1/4

Government Corner ☐ Control ☐  
Meander ☐ Property ☐  
Rancho ☐ Other ☒

N \_\_\_\_\_  
E \_\_\_\_\_  
Zone \_\_\_\_\_ NAD27 ☐ NAD83 ☐  
NAD83 Epoch \_\_\_\_\_  
Elev. \_\_\_\_\_  
Vert. Datum: NVGD29 ☐ NVGD88 ☐  
Meas. Units: Metric ☐ Imperial ☐

SEC. 34 T.4N, R.6E

Date of Survey 8-31-2012

Corner- Left as found ☒ Found and tagged ☐ Established ☐ Reestablished ☐ Rebuilt ☐

Identification and type of corner found: Evidence used to identify or procedure used to establish or reestablish the corner:  
FOUND 3/4" REBAR TAGGED RCE 19638 IN MONUMENT WELL, AT THE INTERSECTION OF LILAC STREET AND  
WOODS STREET LOCATED IN THE NORTHEAST QUARTER OF SECTION 34, T.4N, R.6E, M.D.B.&M. FOUND  
MONUMENT AS SHOWN ON RECORD MAP FILED IN BOOK 30 OF MAPS AND PLATS AT PAGE 46, SAN JOAQUIN  
COUNTY RECORDS.

A description of the physical condition of the monument as found and as set or reset: \_\_\_\_\_  
MONUMENT IS IN AREA OF RECONSTRUCTION, SET TIES AS SHOWN ON PAGE 2.

## SURVEYOR'S STATEMENT

This Corner Record was prepared by me or under my direction in conformance with  
the Land Surveyors' Act on OCTOBER 1, 2012,



Signed [Signature] P.L.S. or R.C.E. Number 6953

## COUNTY SURVEYOR'S STATEMENT

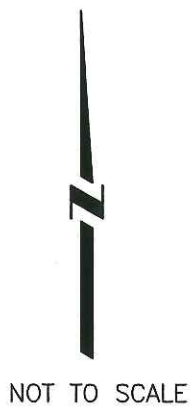
This Corner Record was received OCTOBER 4, 2012 and examined  
and filed NOVEMBER 8, 2012

Signed [Signature] P.L.S. or R.C.E. No: 4440

Title Asst. County Surveyor

County Surveyor's Comment \_\_\_\_\_

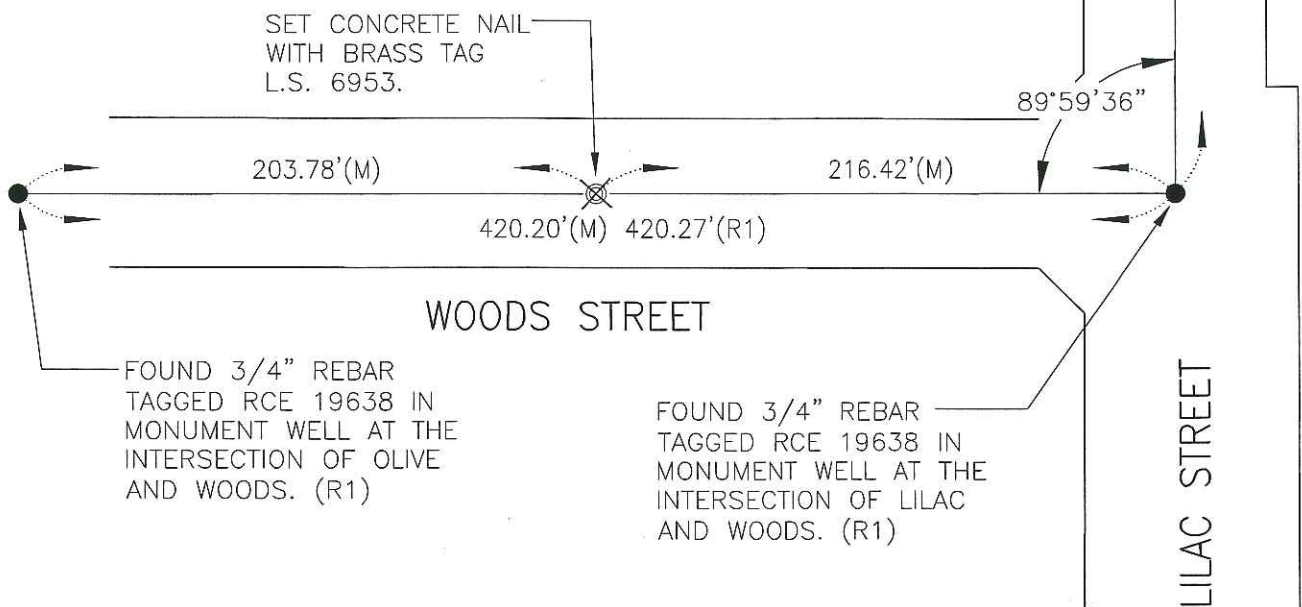




FOUND 5/8" REBAR WITH  
PLASTIC CAP L.S. 5978 IN  
MONUMENT WELL AT THE  
INTERSECTION OF LILAC  
AND MOKELUMNE. (R2)

### REFERENCE:

- (R1) M.&P. 30-46, S.J.C.R.  
(R2) P.M. 24-10, S.J.C.R.



### LEGEND:

- ⊗ SET MONUMENT AS NOTED  
● FOUND MONUMENT AS NOTED.  
S.J.C.R. DENOTES SAN JOAQUIN COUNTY RECORDS  
M.&P. DENOTES MAPS AND PLATS  
P.M. DENOTES MAPS AND PLATS  
(M) MEASURED DISTANCE. ALL DISTANCES ARE  
MEASURED UNLESS NOTED OTHERWISE.