

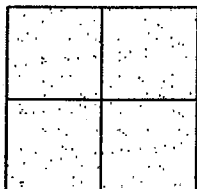
# CORNER RECORD

Document Number CR-12-379  
County of San Joaquin, California

City of \_\_\_\_\_

Brief Legal Description ESCALON BELLOTA ROAD 6622'+/- NORTH OF GAWNE ROAD

WITHIN SECTION 29, TOWNSHIP 1 NORTH, RANGE 9 EAST, MOUNT DIABLO BASE & MERIDIAN



## CORNER TYPE

Government Corner ☐ Control ☐  
Meander ☐ Property ☐  
Rancho ☐ Other ☒

Date of Survey September 18, 2012

## COORDINATES (Optional)

N. \_\_\_\_\_  
E. \_\_\_\_\_  
Zone \_\_\_\_\_ NAD27 ☐ NAD83 ☐  
NAD83 Epoch \_\_\_\_\_  
Elev. \_\_\_\_\_  
Vert. Datum: NGVD29 ☐ NAVD88 ☐  
Meas. Units: Metric ☐ Imperial ☒

Corner - Left as found ☐ Found and tagged ☐ Established ☐ Reestablished ☒ Rebuilt ☐

Identification and type of corner found: Evidence used to identify or procedure used to establish or reestablish the corner:  
SEE SKETCH ON BACKSIDE.

A description of the physical condition of the monument as found and as set or reset:  
SEE SKETCH ON BACKSIDE.

## SURVEYOR'S STATEMENT

This Corner Record was prepared by me or under my direction in conformance with  
the Land Surveyors' Act on October 25, 2012.

Signed James E. Hart P.L.S. Number 8657

## COUNTY SURVEYOR'S STATEMENT

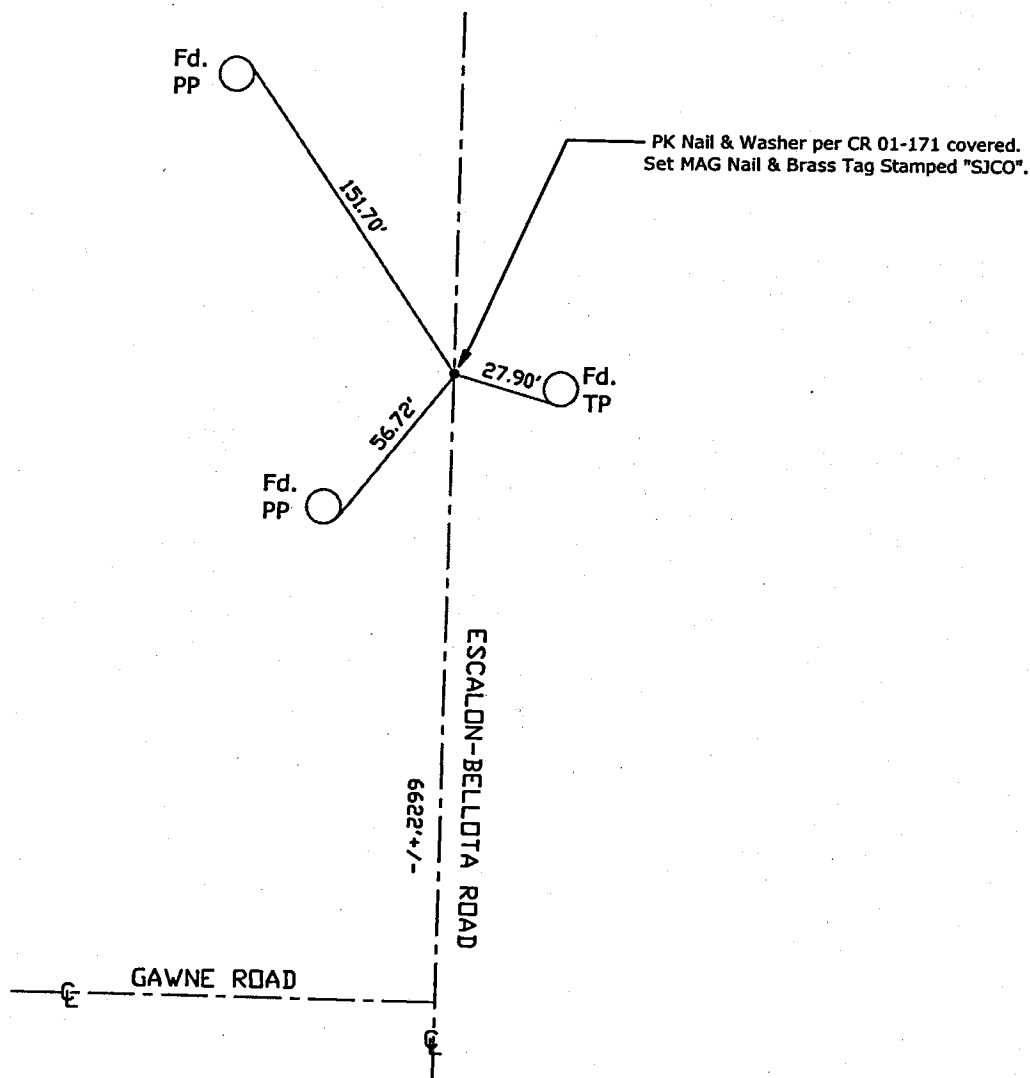
This Corner Record was received OCTOBER 25, 2012 and examined  
and filed January 16, 2013.

Signed Thomas M. Gau R.C.E. No. 26994

Title County Surveyor

County Surveyor's Comment \_\_\_\_\_





Note: Found Monuments are not tagged unless otherwise noted.

"No Attempt Was Made to Verify the Monument(s)"

Set=Conc. Nail with Brass Washer Stamped  
"S.J. Co.", unless otherwise noted  
Fd.=Found Conc. Nail with Brass Washer Stamped  
"S.J. Co.", unless otherwise noted  
CR=Corner Record  
FP=Fence Post  
JP=Joint Pole  
LP=Light Pole  
PP=Power Pole  
GP=Guy Pole  
SP=Service Pole  
TP=Telephone Pole  
S.F.N.=Searched Found Nothing  
N.T.S.=Not To Scale  
M&P=Maps & Plats  
PM=Parcel Map  
RS=Record of Survey  
FB=Field Book