

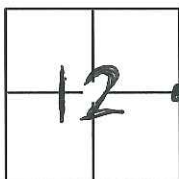
CORNER RECORD

Document Number CR-12-373

City of Manteca

County of San Joaquin, California

Brief Legal Description East quarter corner of Section 12 per Book 35 of Maps & Plats, Page 11, S.J.C.R.



T.2S., R.6E.

CORNER TYPE

Government Corner ☒ Control ☐
Meander ☐ Property ☐
Rancho ☐ Other ☐

Date of Survey July 31, 2012

COORDINATES(Optional)

N. _____
E. _____
Zone _____ NAD27 ☐ NAD83 ☐
NAD83 Epoch _____
Elev. _____
Vert. Datum: NGVD29 ☐ NADV88 ☐
Meas. Units: Metric ☐ Imperial ☒

Corner - Left as found ☐ Found and tagged ☐ Established ☐ Reestablished ☒ Rebuilt ☐

Identification and type of corner found: Evidence used to identify or procedure used to establish or reestablish the corner:

SEE SKETCH ON PAGE 2

A description of the physical condition of the monument as found and as set or reset:

SEE SKETCH ON PAGE 2

SURVEYOR'S STATEMENT

This Corner Record was prepared by me or under my direction in conformance with

the Land Surveyor's Act on July 31st, 2012.

Signed Douglas F. Banks P.L.S. ~~8159~~ No.: 8159



COUNTY SURVEYOR'S STATEMENT

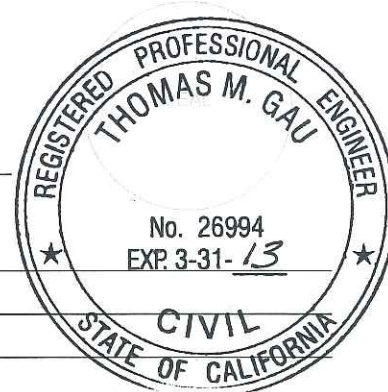
This Corner Record was received OCTOBER 25, 2012 and examined

and filed NOVEMBER 5, 2012.

Signed Thomas M. Gau P.L.S. or R.C.E. No.: 26994

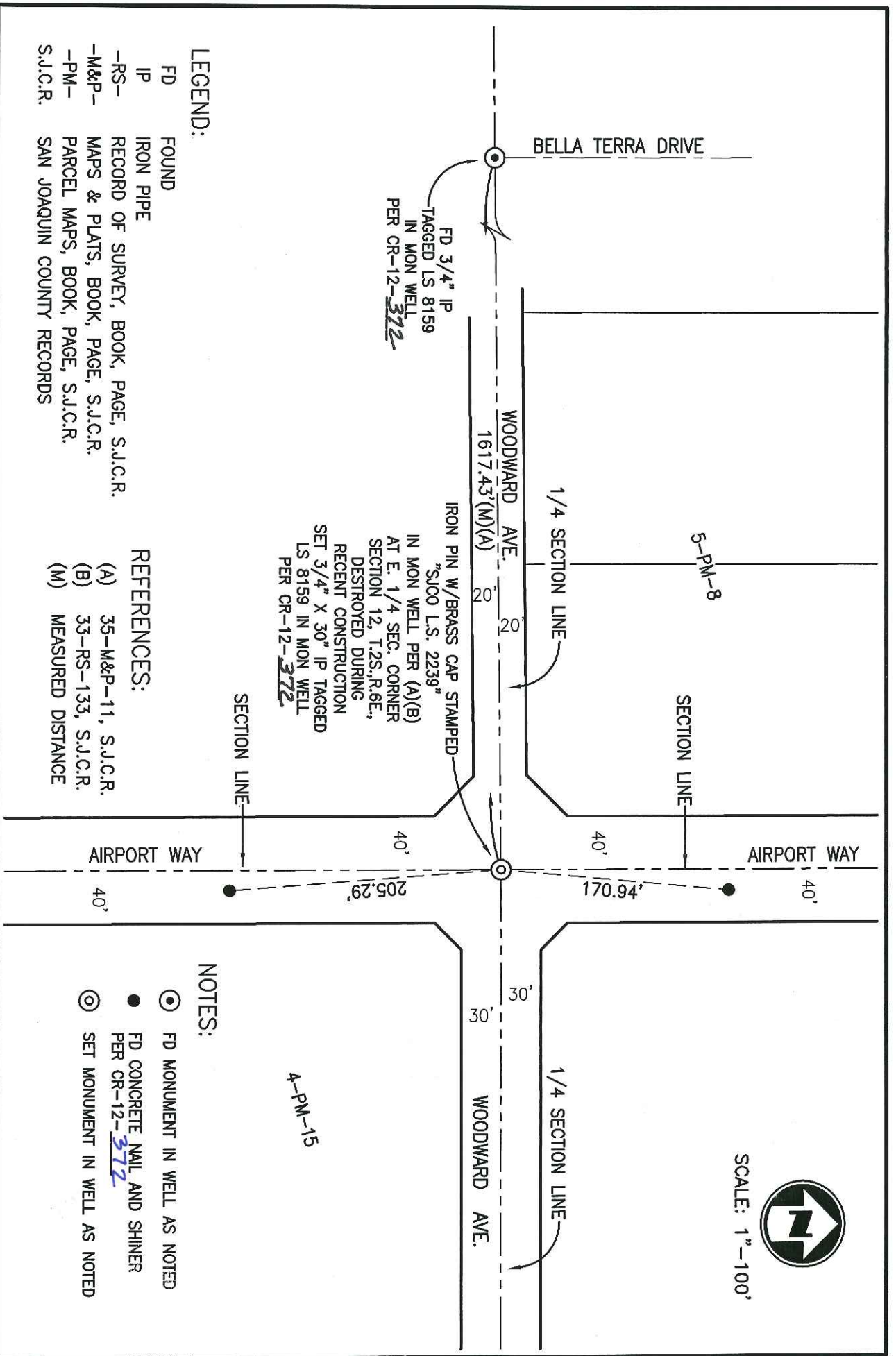
Title COUNTY SURVEYOR

County Surveyor's Comment _____





SCALE: 1"=100'



LEGEND:

- FD FOUND
- IP IRON PIPE
- RS- RECORD OF SURVEY, BOOK, PAGE, S.J.C.R.
- M&P- MAPS & PLATS, BOOK, PAGE, S.J.C.R.
- PM- PARCEL MAPS, BOOK, PAGE, S.J.C.R.
- S.J.C.R. SAN JOAQUIN COUNTY RECORDS

REFERENCES:

- (A) 35-M&P-11, S.J.C.R.
- (B) 33-RS-133, S.J.C.R.
- (M) MEASURED DISTANCE

NOTES:

- ⊙ FD MONUMENT IN WELL AS NOTED
- FD CONCRETE NAIL AND SHINER PER CR-12-372
- ⊙ SET MONUMENT IN WELL AS NOTED