

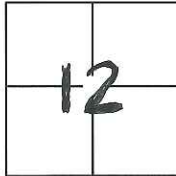
# CORNER RECORD

Document Number CR-12-371

City of Unincorporated Area of County

County of San Joaquin, California

Brief Legal Description Northeast quarter of Section 12 per Book 35 of Maps & Plats, Page 11, S.J.C.R.



T.2S., R.6E.

## CORNER TYPE

Government Corner ☐ Control ☐  
Meander ☐ Property ☐  
Rancho ☐ Other ☒

Date of Survey July 30, 2012

## COORDINATES(Optional)

N. \_\_\_\_\_

E. \_\_\_\_\_

Zone \_\_\_\_\_ NAD27 ☐ NAD83 ☐

NAD83 Epoch \_\_\_\_\_

Elev. \_\_\_\_\_

Vert. Datum: NGVD29 ☐ NADV88 ☐

Meas. Units: Metric ☐ Imperial ☒

Corner - Left as found ☐ Found and tagged ☐ Established ☐ Reestablished ☒ Rebuilt ☐

Identification and type of corner found: Evidence used to identify or procedure used to establish or reestablish the corner:

SEE SKETCH ON PAGE 2

A description of the physical condition of the monument as found and as set or reset:

SEE SKETCH ON PAGE 2

## SURVEYOR'S STATEMENT

This Corner Record was prepared by me or under my direction in conformance with

the Land Surveyor's Act on July 30th, 2012.

Signed Douglas F. Banks P.L.S. or R.C.E. No.: 8159



## COUNTY SURVEYOR'S STATEMENT

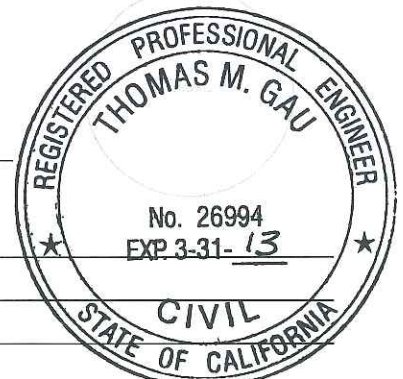
This Corner Record was received OCTOBER 25, 2012 and examined

and filed NOVEMBER 5, 2012.

Signed Thomas M. Gau P.L.S. or R.C.E. No.: 26994

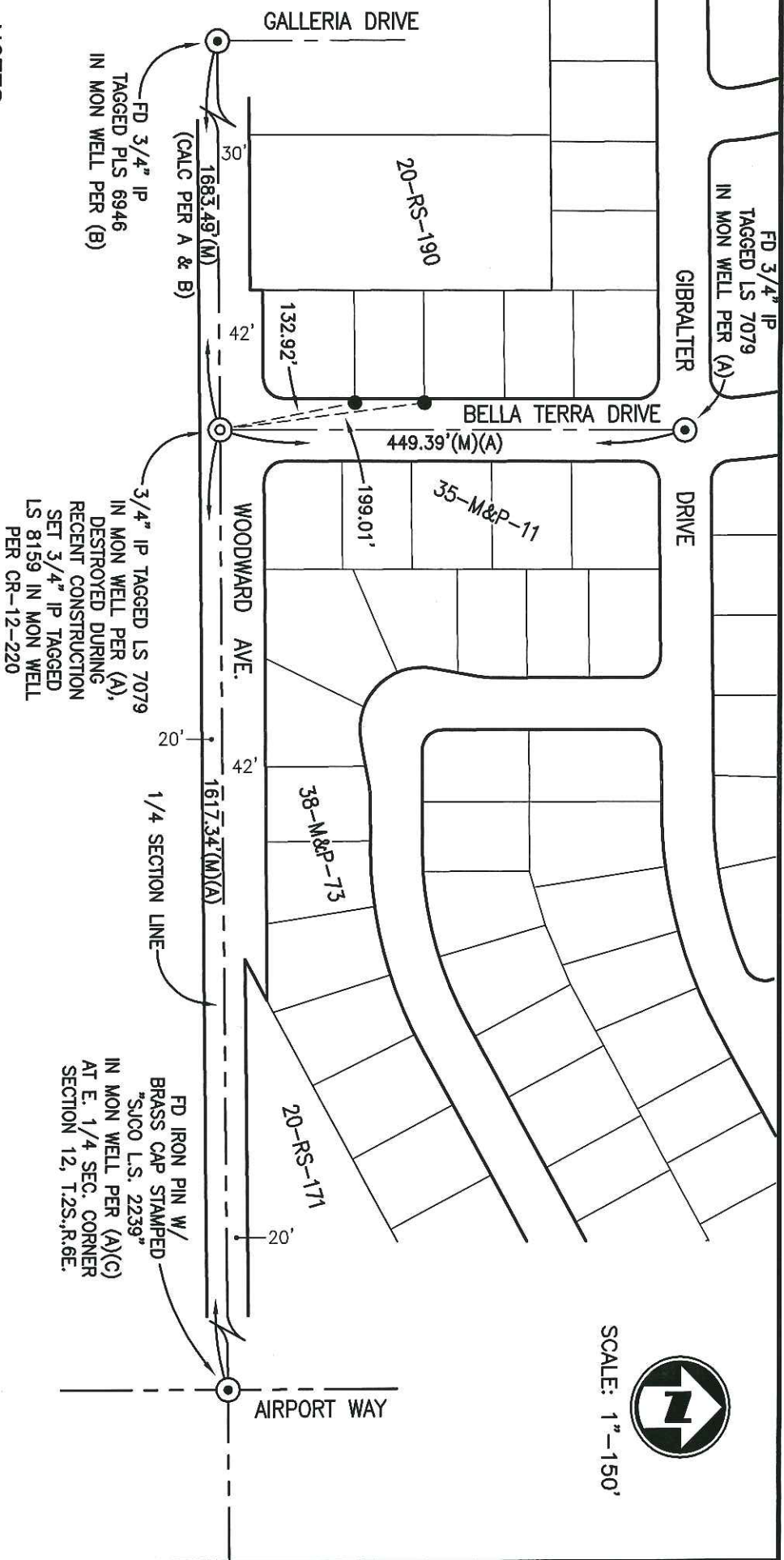
Title COUNTY SURVEYOR

County Surveyor's Comment \_\_\_\_\_





SCALE: 1"=150'



### NOTES:

- FD MONUMENT IN WELL AS NOTED
- FD SAW CUT '4' IN CONCRETE AT 4.00-FOOT PROJECTION FROM LOT CORNER PER (A)
- SET MONUMENT IN WELL AS NOTED

### REFERENCES:

- (A) 35-M&P-11, S.J.C.R.
- (B) 40-M&P-72, S.J.C.R.
- (C) 33-RS-133, S.J.C.R.
- (M) MEASURED DISTANCE

### LEGEND:

- FD FOUND
- IP IRON PIPE
- RS- RECORD OF SURVEY, BOOK, PAGE, S.J.C.R.
- M&P- MAPS & PLATS, BOOK, PAGE, S.J.C.R.
- S.J.C.R. SAN JOAQUIN COUNTY RECORDS