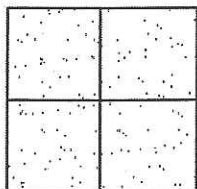


CORNER RECORD

Document Number CR-12-341
 City of _____ County of San Joaquin, California

Brief Legal Description DAVIS ROAD 4279' +/- NORTH OF WOODBRIDGE ROAD
(WITHIN SECTION 29, TOWNSHIP 4 NORTH, RANGE 6 EAST, MOUNT DIABLO BASE & MERIDIAN)



CORNER TYPE

Government Corner ☐ Control ☐
 Meander ☐ Property ☐
 Rancho ☐ Other ☒

Date of Survey September 11, 2012

COORDINATES (Optional)

N. _____
 E. _____
 Zone _____ NAD27 ☐ NAD83 ☐
 NAD83 Epoch _____
 Elev. _____
 Vert. Datum: NGVD29 ☐ NAVD88 ☐
 Meas. Units: Metric ☐ Imperial ☒

Corner - Left as found ☒ Found and tagged ☐ Established ☐ Reestablished ☐ Rebuilt ☐

Identification and type of corner found: Evidence used to identify or procedure used to establish or reestablish the corner:
SEE SKETCH ON BACKSIDE.

A description of the physical condition of the monument as found and as set or reset:
SEE SKETCH ON BACKSIDE.

SURVEYOR'S STATEMENT

This Corner Record was prepared by me or under my direction in conformance with
 the Land Surveyors' Act on October 8, 2012.

Signed James E. Hart P.L.S. Number 8657

COUNTY SURVEYOR'S STATEMENT

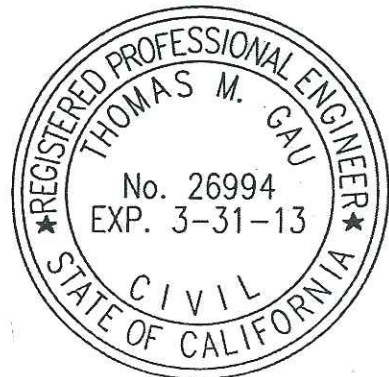
This Corner Record was received OCTOBER 8, 2012 and examined
 and filed DECEMBER 24, 2012.

Signed Thomas M. Gau R.C.E. No. 26994

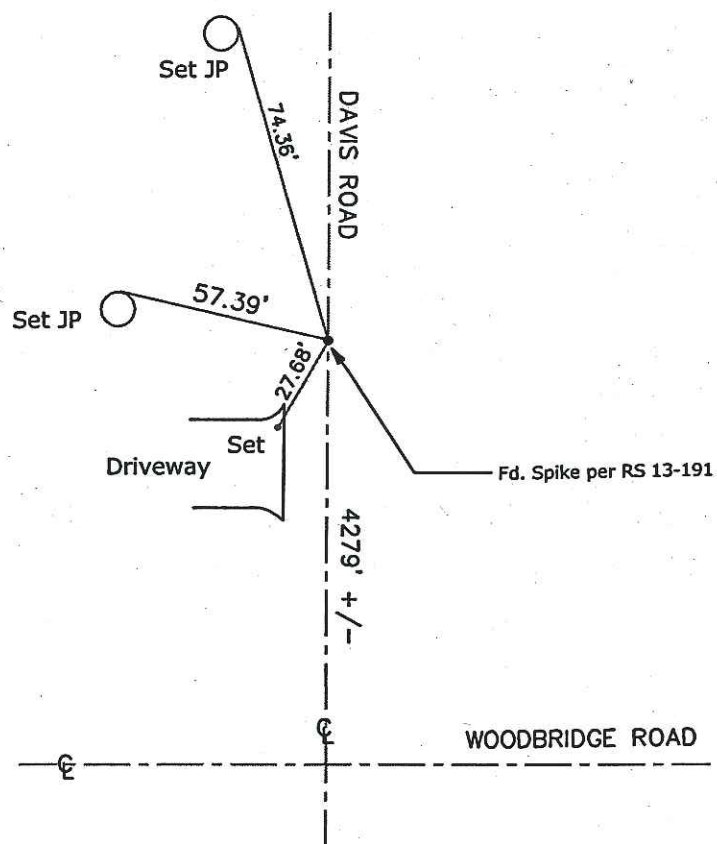
Title County Surveyor

County Surveyor's Comment _____

(D.D. Sheet Nos. 12 & 13)
 (Job No. _____)



N.T.S.



"No Attempt Was Made to Verify the Monument(s)"

"S.J. Co.", unless otherwise noted

"S.J. Co.", unless otherwise noted

FB=Field Book