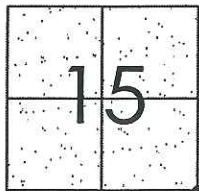


CORNER RECORD

Document Number CR-12-322
 City of _____ County of San Joaquin, California

Brief Legal Description PELTIER ROAD 1/4 MILE +/- WEST OF LOWER SACRAMENTO ROAD



T4N R6E
MDB&M

CORNER TYPE

Government Corner ☒ Control ☐
 Meander ☐ Property ☐
 Rancho ☐ Other ☐

Date of Survey September 10, 2012

COORDINATES (Optional)

N. _____
 E. _____
 Zone _____ NAD27 ☐ NAD83 ☐
 NAD83 Epoch _____
 Elev. _____
 Vert. Datum: NGVD29 ☐ NAVD88 ☐
 Meas. Units: Metric ☐ Imperial ☒

Corner - Left as found ☒ Found and tagged ☐ Established ☐ Reestablished ☐ Rebuilt ☐

Identification and type of corner found: Evidence used to identify or procedure used to establish or reestablish the corner:
SEE SKETCH ON BACKSIDE.

A description of the physical condition of the monument as found and as set or reset:
SEE SKETCH ON BACKSIDE.

SURVEYOR'S STATEMENT

This Corner Record was prepared by me or under my direction in conformance with the Land Surveyors' Act on October 1, 2012.

Signed James E. Hart P.L.S. Number 8657

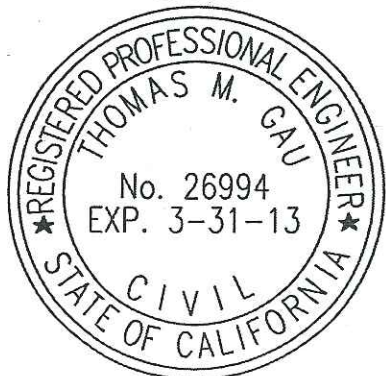
COUNTY SURVEYOR'S STATEMENT

This Corner Record was received OCTOBER 1, 2012 and examined and filed DECEMBER 24, 2012.

Signed Thomas M. Gau R.C.E. No. 26994
 Title County Surveyor

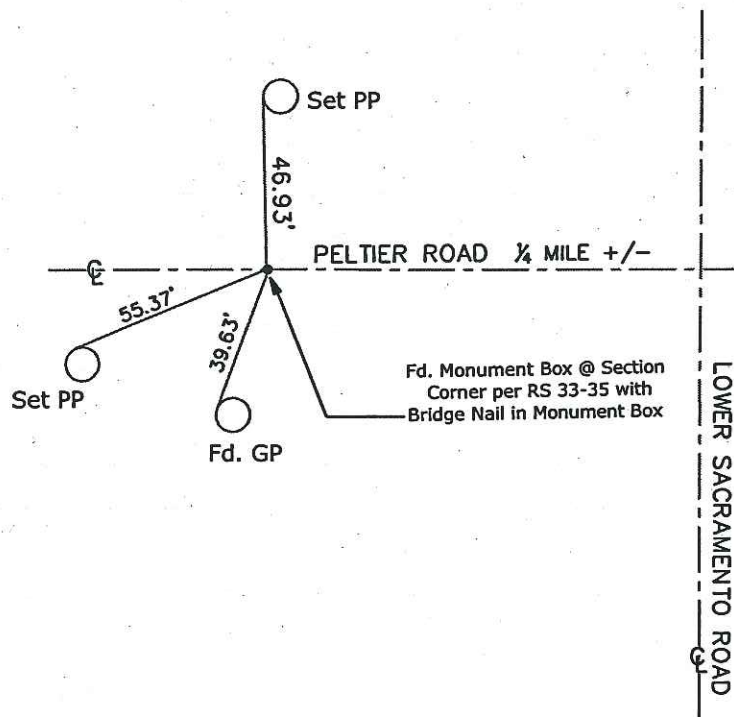
County Surveyor's Comment _____

(D.D. Sheet No. 10)
 (Job No.)





N.T.S.



Note: Found Monuments are not tagged unless otherwise noted.

"No Attempt Was Made to Verify the Monument(s)"

Set=Conc. Nail with Brass Washer Stamped

"S.J. Co.", unless otherwise noted

Fd.=Found Conc. Nail with Brass Washer Stamped

"S.J. Co.", unless otherwise noted

CR=Corner Record

FP=Fence Post

JP=Joint Pole

LP=Light Pole

PP=Power Pole

GP=Guy Pole

SP=Service Pole

TP=Telephone Pole

S.F.N.=Searched Found Nothing

N.T.S.=Not To Scale

M&P=Maps & Plats

PM=Parcel Map

RS=Record of Survey

FB=Field Book