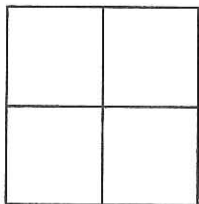


# CORNER RECORD

City of \_\_\_\_\_

Document Number CR-12-317  
County of San Joaquin, California

Brief Legal Description "Bottom Land" parcel of that certain map filed for record January 21, 1972 in Book of 22 of surveys at Page 32.



## CORNER TYPE

Government Corner ☐ Control ☐  
Meander ☐ Property ☒  
Rancho ☐ Other ☐

Date of Survey 6/7/12

## COORDINATES (Optional)

N. \_\_\_\_\_  
E. \_\_\_\_\_  
Zone \_\_\_\_\_ NAD27 ☐ NAD83 ☐  
NAD83 Epoch \_\_\_\_\_  
Elev. \_\_\_\_\_  
Vert. Datum: NGVD29 ☐ NAVD88 ☐  
Meas. Units: Metric ☐ Imperial ☐

Corner - Left as found ☐ Found and tagged ☐ Established ☐ Reestablished ☒ Rebuilt ☐

Identification and type of corner found: Evidence used to identify or procedure used to establish or reestablish the corner:  
I found two monuments of record on the northerly line of "bottom land" parcel as shown on said map. I reset monuments as shown.

A description of the physical condition of the monument as found and as set or reset: The found monuments were in satisfactory condition and the distance measured between them was reasonable. I set 3/4" x 30" iron rods capped with "LS7269."

## SURVEYOR'S STATEMENT

This Corner Record was prepared by me or under my direction in conformance with the Land Surveyors' Act on June 8, 2012.

Signed Joe Murphy L.S. No: 7269

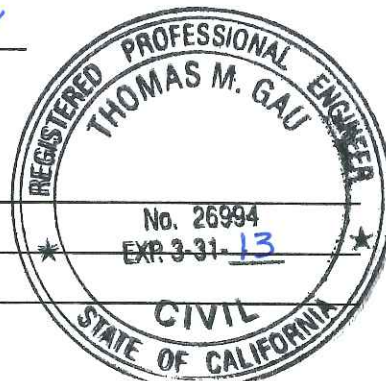


## COUNTY SURVEYOR'S STATEMENT


This Corner Record was received SEPTEMBER 24, 2012 and examined and filed OCTOBER 15, 2012.

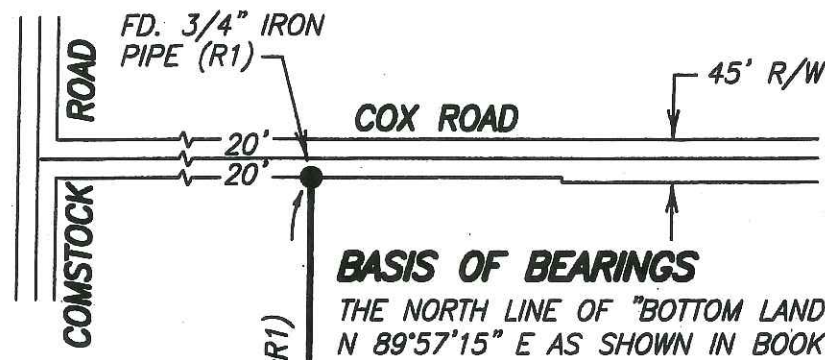
Signed Thomas M. Gau R.C.E. No. 26994

Title COUNTY SURVEYOR



County Surveyor's Comment \_\_\_\_\_

  
 SCALE: 1" = 200'



**BASIS OF BEARINGS**

THE NORTH LINE OF "BOTTOM LAND" PARCEL, WHICH BEARS N 89°57'15" E AS SHOWN IN BOOK 22 OF SURVEYS AT PAGE 32, SAN JOAQUIN COUNTY RECORDS.

**LEGEND**

- FOUND MONUMENT AS NOTED
- SET 3/4" IRON ROD CAPPED  
LS 7269
- (M) MEASURED
- FD. FOUND
- R/W RIGHT-OF-WAY
- R.S. RECORD OF SURVEY
- (R1) R.S. 22-32

